

Farm King

OPERATOR AND PARTS MANUAL

Backsaver Auger

10" Model



Table of Contents

Introduction	5
Safety.....	6
• Safety	6
• General Safety	7
• Start-up Safety	7
• Operation Safety	7
• Transport Safety	8
• Service and Maintenance Safety	8
• Storage Safety	9
• Safety Signs	9
• Safety Sign Installation	9
Assembly.....	12
• Assembly Instructions	12
Operation	13
• Theory of Operation	17
Maintenance	18
• Maintenance and Lubricants.....	18
• Storage	18
• Greasing Procedure	19
Bolt Torque	20
• Checking Bolt Torque	20
Parts Drawings.....	22
• Auger Assembly Drawing	22
• Auger Assembly Parts List	23
• Lift Boom Arm Components Drawing	26
• Lift Boom Arm Components Parts List.....	27
• Undercarriage Components Drawing	28
• Undercarriage Components Parts List	29
• Hopper and Auger Assembly Drawing.....	32
• Hopper and Auger Assembly Drawing.....	33
• Input Box Assembly Drawing	34
• Input Box Assembly Parts List	35
• Intake Auger Drawing	38
• Intake Auger Parts List.....	39

• Single-flighting Hopper Drawing.....	40
• Single-flighting Hopper Parts List.....	41
• 10" x 10' Extension Drawing.....	42
• 10" x 10' Extension Parts List.....	43
• Multi-flighting Hopper Drawing.....	44
• Multi-flighting Hopper Parts List.....	45
• Cables Drawing	48
• Cables Parts List.....	49
• Idler Assembly Drawing	50
• Idler Assembly Parts List	51
• Tire Assembly Drawing	52
• Tire Assembly Parts List	53
• Cylinder Mount Components Drawing	54
• Cylinder Mount Components Parts List	55
• 3.50 Dia. x 30.00 Cylinder Drawing and Parts List.....	56
• 4.00 Dia. x 36.00 Cylinder Drawing and Parts List.....	57
• 4.00 Dia. x 40.00 Cylinder Drawing and Parts List.....	58
• PTO Shaft Drawing	60
• PTO Shaft Parts List	61
• Mechanical Drive - Input Box Gearbox Drawing	62
• Mechanical Drive - Input Box Gearbox Parts List.....	63
• Mechanical Drive - Intake Auger Gearbox Drawing	64
• Mechanical Drive - Intake Auger Gearbox Parts List.....	65
• 1051 Winch Drawing	66
• 1051 Winch Parts List	67
Shipping Kit and Bundle Numbers	68
Warranty	76

Manufacturer's statement: for technical reasons Buhler Industries Inc. reserves the right to modify machinery design and specifications provided herein without any preliminary notice. Information provided herein is of descriptive nature. Performance quality may depend on soil fertility, applied agricultural techniques, weather conditions and other factors.

Introduction

Farm King gives you more choices to match your auger to your bins, power sources and operating convenience. The superior scissor lift system features a one way hydraulic cylinder with a restrictor valve to control the rate of descent in the event of hydraulic hose failure. This feature is safer than conventional cable systems. Also, note the extra wide undercarriage and wheel tread providing better stability at greater heights, particularly in windy conditions. The unique mechanical linkage is designed to use less hydraulic pressure to lift the auger, even when fully loaded. The pivoting Hopper Lift Arm may be flipped over for left or right transport position. Slip the PTO from the main shaft onto the optional reverse kit for complete cleanout. An adjustable arm holds the PTO shaft when not in use. The hitch is adjustable for various tractor hitch lengths.

The shut off valve is designed to keep your auger in the position you set it. The cross auger is driven by two internal gearboxes. These assemblies are easily reached for service. Because of the large input and intake boxes, capacity is not restricted.

The standard self leveling hopper on all Backsaver Augers stays flat on the ground, even when the auger is raised up to a high bin. The optional double auger hopper is 2.5" (63.5mm) lower than the standard self-leveling hopper and has a hinged cover for easy servicing. An optional 2-wheel power mover allows you to move the hopper back and forth with fingertip control.

Other advanced features include a tapered thrust bearing at the top of the auger, torqued to remove pressure on the bottom end bearing.

Keep this manual handy for frequent reference. All new operators or owners must review the manual before using the equipment and at least annually thereafter. Contact your Farm King Dealer if you need assistance, information, or additional copies of the manual. Visit our website at www.buhlerindustries.com for a complete list of dealers in your area.

The directions left, right, front and rear, as mentioned throughout this manual, are as seen facing in the direction of travel of the implement.

Safety

Safety Instructions

Remember, YOU are the key to safety. Good safety practices not only protect you, but also the people around you. Make these practices a working part of your safety program. Be certain that everyone operating this equipment is familiar with the recommended operating and maintenance procedures and follows all the safety precautions. Most accidents can be prevented. Do not risk injury or death by ignoring good safety practices.

The alert symbol is used throughout this manual. It indicates attention is required and identifies hazards. Follow the recommended precautions.



The safety alert symbol means...

ATTENTION! BECOME ALERT! YOUR SAFETY IS INVOLVED!



CAUTION

The caution symbol indicates a potentially hazardous situation that, if not avoided, may result in minor or moderate injury. It may also be used to alert against unsafe practices.



WARNING

The Warning Symbol indicates a potentially hazardous situation that, if not avoided, could result in death or serious injury, and includes hazards that are exposed when guards are removed. It may also be used to alert against unsafe practices.



DANGER

The Danger Symbol indicates an imminently hazardous situation that, if not avoided will result in death or serious injury. This signal word is to be limited to the most extreme situations, typically for machine components that, for functional purposes, cannot be guarded.

General Safety Instructions

- Have a first-aid kit available for use and know how to use it.
- Have a fire extinguisher available, stored in a highly visible location, and know how to use it.
- Wear appropriate protective gear. This list may include but is not limited to:
 - hard hat
 - protective shoes with slip resistant soles
 - protective glasses or goggles
 - heavy gloves
 - wet weather gear
 - hearing protection
 - respirator or filter mask
- Read and understand the Operator's Manual and all safety signs before operating, servicing, adjusting, repairing, or unplugging the equipment.
- Do not attempt any unauthorized modifications to your Farm King product as this could affect function or safety, and could affect the life of the equipment.
- Never start or operate the mower except from the operator's station on the power unit.
- Inspect and clean the working area before operating.
- Keep hands, feet, clothing, and hair away from moving parts.
- Ensure bystanders are clear of the area before operating.

Start-up Safety

- Do not let inexperienced operators or children run this equipment.
- Place all tractor and machine controls in neutral before starting.
- Operate only with ROPS and seatbelt equipped tractors.
- Do not operate inside a building unless there is adequate ventilation.
- Ensure all shields are in place and in good condition before operating.
- Stay clear of PTO shaft and machine when engaging PTO.
- The Auger must be on a level surface and wheels free to move when raising or lowering. Everyone should be kept clear during these operations.

Operation Safety

- Do not permit riders.
- Do not wear loose fitting clothing during operation.
- Empty the Auger before moving to prevent upending.
- The Backsaver Auger should be attached to the drawbar of the tractor at all times during operations.
- Do not allow anyone other than the operator close to the Auger when in operation.
- Never stand under the auger while raising or lowering.
- When filling tall bins, tanks, or granaries, it is advisable to anchor the auger to the bin or building to prevent it from being tipped over by the wind or a sudden movement.
- Do not operate Intake Auger when it is folded in transport position.
- Stay away from overhead obstructions and power lines during operation and transporting. Electrocution can occur without direct contact.

Transport Safety

- Review Transport Safety instructions in tractor manual before moving.
- Check with local authorities regarding transport on public roads. Obey all applicable laws and regulations.
- Do not tow equipment that does not have brakes at speeds over 20 mph/h (32 km/h).
- Do not tow equipment that does not have brakes that, when fully loaded, has a mass (weight) over 3300 lb (1.5 t) and more than 1.5 times the mass (weight) of the towing unit.
- Make sure the SMV (Slow Moving Vehicle) emblem and all the lights and reflectors that are required by the local highway and transport authorities are in place, are clean, and can be seen clearly by all overtaking and oncoming traffic.
- Always transport the Backsaver Auger in the down position, carrying the weight of the Auger on the undercarriage itself, and not the hydraulic cylinder.
- Take extreme caution in maneuvering on or around tight corners so as not to catch the end of the auger on trees, buildings, power lines, etc.
- The equipment should never be towed without the safety chain securely attached to the Auger and the towing vehicle.
- When moving the Auger on the road, always use a red flag, or if absolutely necessary to move at night, accessory lights for adequate warning to operators of other vehicles.
- Always travel at a safe speed.
- Inflate transport tires to recommended pressure.

Service and Maintenance Safety

- Stop engine, set brake, remove ignition key, and wait for all moving parts to stop before servicing, adjusting, repairing, or unplugging.
- Support the equipment with blocks or safety stands before working beneath it.
- Follow good shop practices including:
 - keep service area clean and dry
 - be sure electrical outlets and tools are properly grounded
 - use adequate light for the job.
- Use only tools, jacks, and hoists of sufficient capacity for the job.
- Replace and secure all shields removed during servicing before operating.
- Use heavy leather gloves to handle sharp objects.
- Check hydraulics regularly for leaks. Use cardboard to look for leaks, and use hand and eye protection.
- Relieve pressure on hydraulic system before repairing or adjusting.
- Failure to follow proper procedures when mounting a tire on a wheel or rim can produce an explosion, which may result in serious injury or death.

Storage Safety

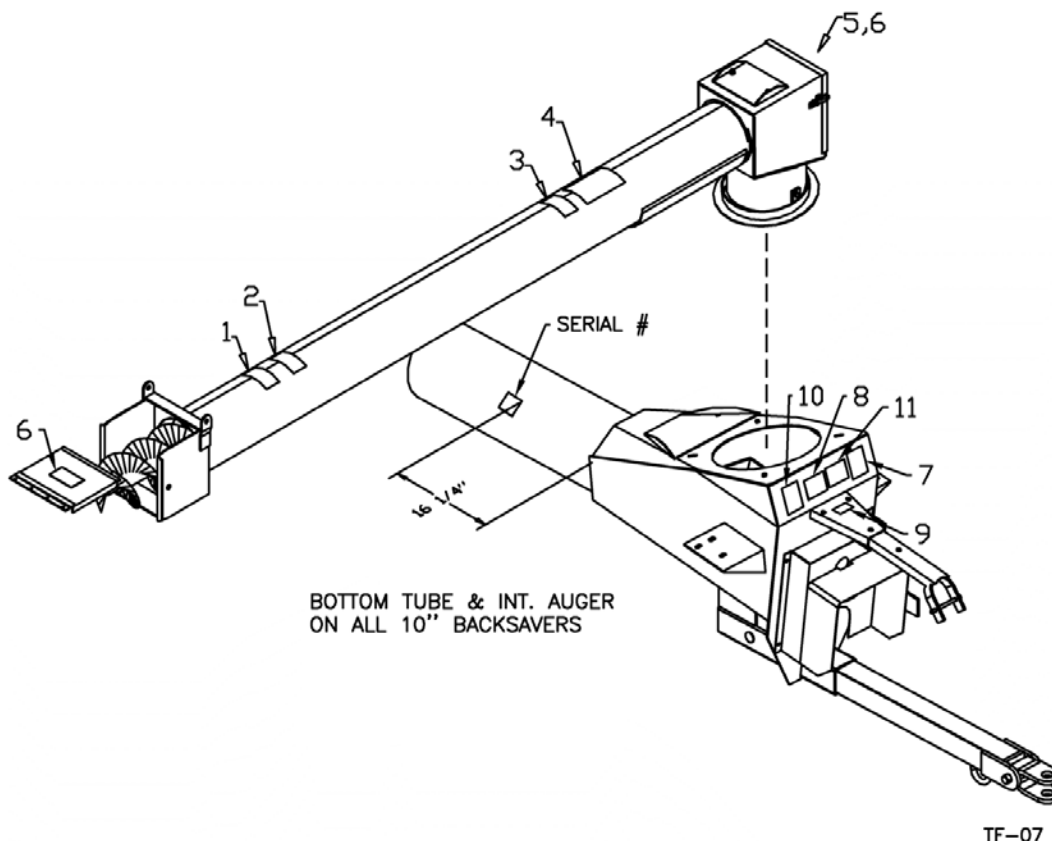
- Store the unit in an area away from human activity.
- Do not permit children to play on or around the stored machine.
- Support the frame on stands and blocks to provide a secure base.
- When storing an Auger, park it on level ground so that the bottom end will never be over its center of gravity.
- Block the wheels of the Auger so that it will not move and tear the jack from it's mount.

Safety Signs

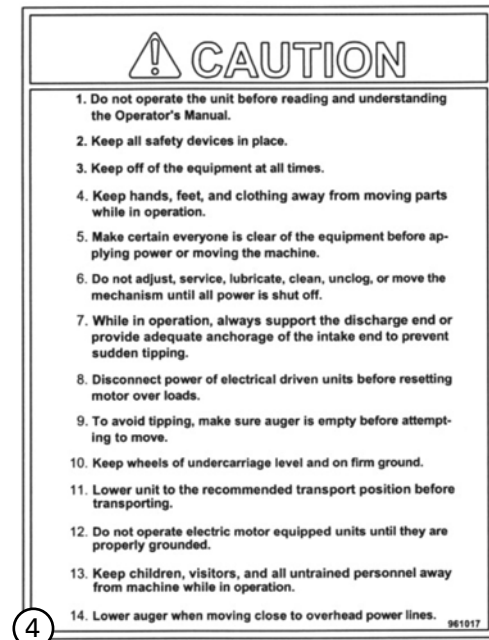
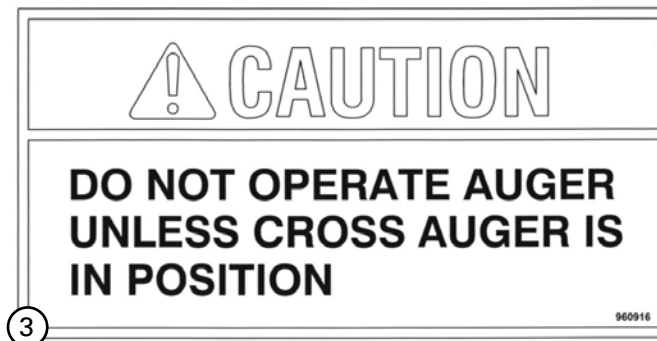
- The following illustration shows the approximate location and detail of safety signs.
- Keep all safety signs clean and legible and replace any that are damaged or missing.
- When original parts are replaced, any safety signs affixed to those parts should be replaced as well. Replacement safety signs are available from your local dealer.

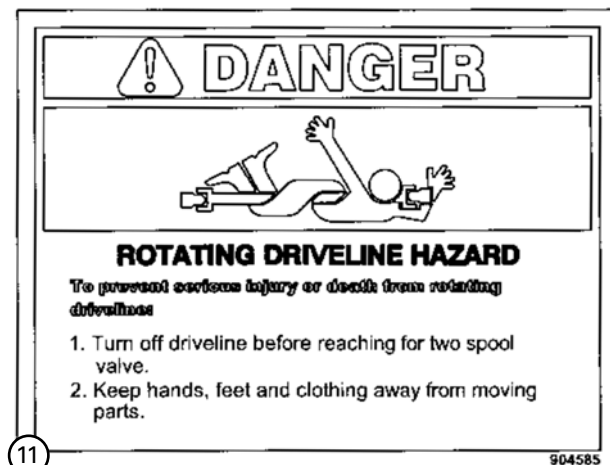
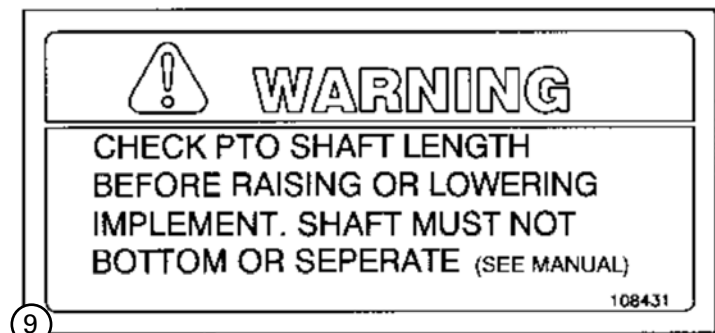
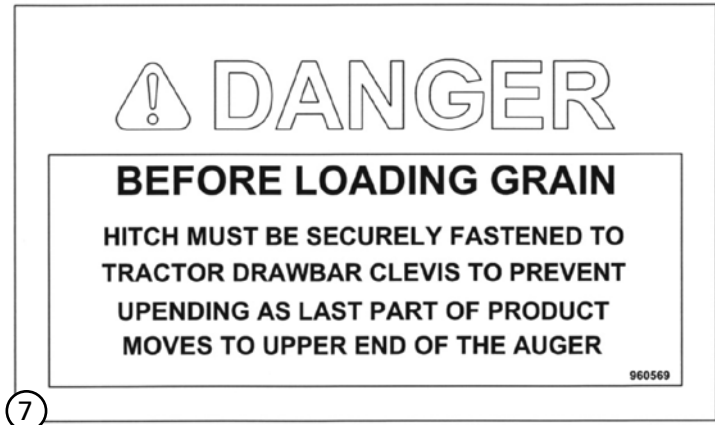
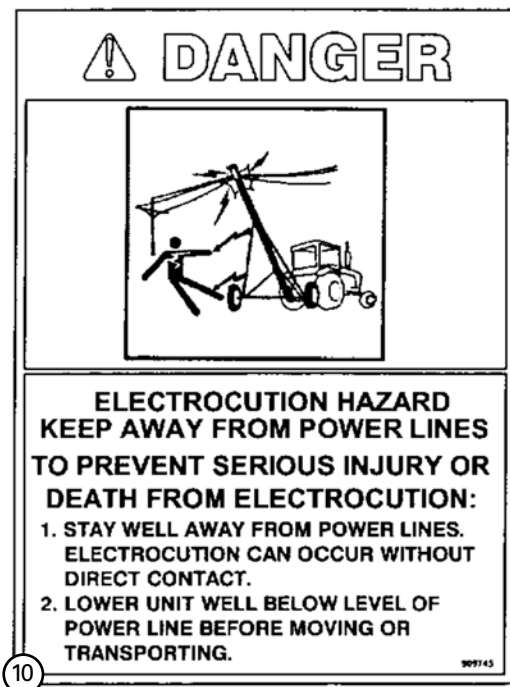
Installation

- To install safety signs, ensure the installation area is clean and dry. Decide on the exact position before you remove the backing paper. Remove the smallest portion of the split backing paper and align over the specified area. Carefully press in place.
- Slowly peel back the remaining paper and smooth the remaining portion in place. Small air pockets can be pierced with a pin and smoothed out.



- Replace safety signs immediately should they become damaged, torn or illegible. Obtain replacements from your authorized dealer using the part numbers shown.





Assembly Instructions



ALERT

There are two holes on the top stub shaft for cotter pin installation on the top flighting, which should allow a wide range of adjustment. If the top flighting is too high, there could be a shortage of room to mount the bottom bearing in the input box.



ALERT

On the bridging yokes where the cable clamps hold two cables, do not use the cast part of the cable clamp or it will be very difficult to get the nuts on the clamps. Use 3/8" I.D. flat washers on cable clamps.



ALERT

The arches are left and right. The bracket for attaching the brace (#80) is turned to the outside. Ends of brace bent at 30° are bolted to the arch. The other end bolts to the undercarriage .



ALERT

The welded cross brace on the pivot yoke should be facing the input box end of the auger.



ALERT

The flow control valve regulates the lowering of the auger to avoid damage which could be caused by lowering the auger too quickly. Arrow should be pointing away from cylinder. Be sure that valve is open approximately 3 1/2 turns before raising to full position or auger will not lower.



ALERT

If the intake auger is removed for repair or replacement, the bolt coupling the flighting to the intake auger gearbox must be replaced when the flighting is replaced. Failure to do so could cause failure of the hopper flighting.

Operation Instructions

- All augers may be elevated up to 45°; however, for the best operating efficiency, 35° should not be exceeded. At angles over 35° the capacity and life of the auger decreases. Use in some types of fertilizer may cause accelerated wear and corrosion as well as added stress on lift components due to additional load. Use in fertilizer can affect warranty.
- Run auger partially full until flighting becomes polished.
- Never operate an empty auger for over one minute, as the flighting and housing will experience excessive wear.
- To position the auger, always tow or move the auger in the down position to a point as close as possible to the bin or barn.



ALERT

Always keep the wheels level. Raise the auger to the desired height and back the auger into position. Do not support the auger on the bin. As the auger becomes full it carries a lot of weight and may cause damage to the underside of the auger to the bin.



ALERT

The auger should be firmly attached to the drawbar of the tractor at all times during operation.



ALERT

Never place blocks under the wheels to increase the elevation of auger.

- Be sure the wheels are free to move and no one is standing close to the auger when raising or lowering. Never attempt to raise or lower the auger while it is in operation.



ALERT

Be sure winch brake is working properly before transporting. An arrow on the winch shows the proper direction of rotation. Improper rotation may cause winch failure. Never have less than three wraps of cable on the drum of the winch.

- The intake auger swivels freely on the top of the input box. It can be positioned anywhere between the tractor and the side of the auger.



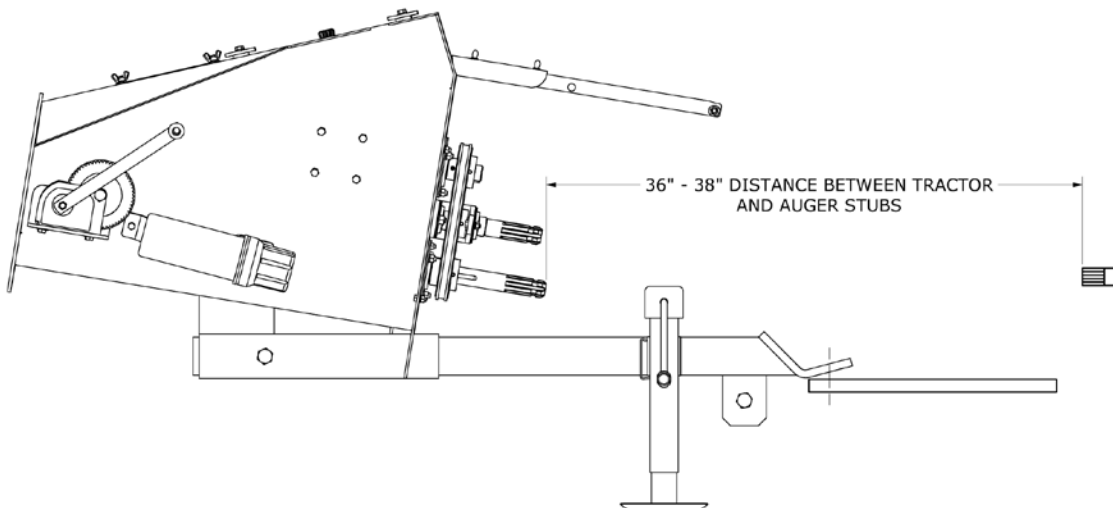
CAUTION

10" augers are destined for PTO drive tractors with 540 PTO rpm only. Maximum capacity will be attained while running the main auger between 450-500 PTO rpm. (Do not use 1000 PTO rpm speed on these augers)



ALERT

Always maintain at least a 4" over lap on the PTO guards. Be sure they turn freely and make certain everyone stands clear of tractor, PTO shaft, and auger before engaging PTO. Be sure ends are securely connected to the auger and tractor. An optional shaft is offered for extreme use.



- The distance between the tractor and the auger stubs should be between 36" and 38" with the tractor and auger on level ground and the auger in full down position. This distance is obtained by either adjusting the tractor hitch, the auger hitch or both.
- Before engaging PTO, start tractor and idle engine. Engage PTO slowly and bring up to recommended speed of 500 PTO rpm for 10" augers.
- Before stopping auger (except in an emergency) let all grain empty out of the auger, idle engine then disengage PTO. Shut off tractor.



ALERT

Do not use the reverse kit to attempt to unplug the auger. The reverse kit is designed to be used for CLEAN-OUT ONLY!



ALERT

When auger is left in raised position over night, close the ball valve on the hydraulic line to the cylinder. This will prevent the auger from lowering, due to hydraulic leakage, and avoid possible damage.

- One-way flow control valve (#115) can be adjusted by loosening the hex nut on the side, and turning on the screw with the machined end. Turning the screw in decreases the speed the auger lowers, while turning it out increases the speed. The approximate initial setting should be three turns out from the tight position. When set, re-tighten hex nut to set position.

**ALERT**

Be sure that the valve is somewhat open before raising the first time or auger will not lower.

- Be sure there is always some tension on the flighting by adjusting the end thrust bearing, at the upper end of the auger.

**ALERT**

Always lower auger before transport and allow the weight of the auger to rest on the undercarriage and not the hydraulic cylinder.

- Be certain to turn jack sideways when towing auger.
- Disconnect the PTO shaft from the tractor and pin it in the PTO holder when towing or manoeuvring the auger. This will prevent possible damage to the shaft during cornering.

**ALERT**

If the PTO shaft angle exceeds 50° during a tight turn, the constant velocity joints will be fractured and will likely fail shortly thereafter during operation.

- PTO shear bolts (2 required).

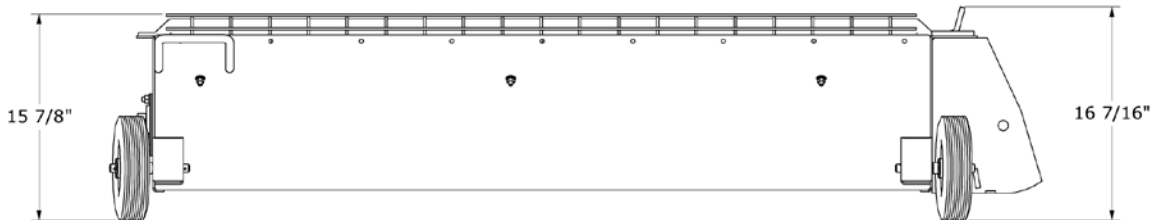
**ALERT**

When towing the auger, never exceed 20 mph (32 km/h).

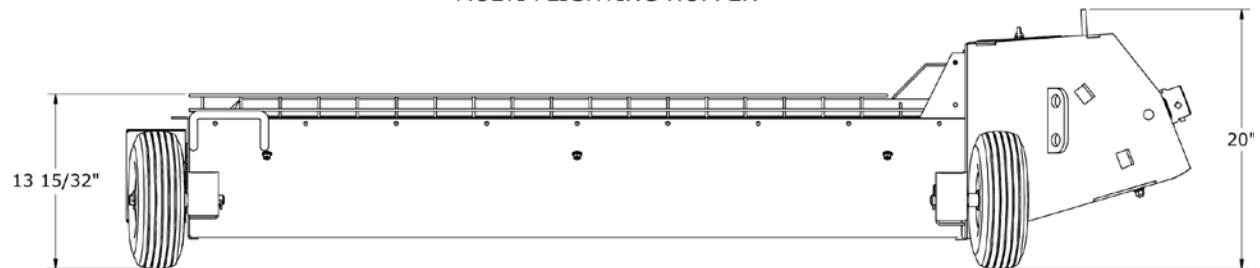
- Always use a flag, or at night, a signal light when towing an auger on a road. Check your local regulations for further safety devices in this regard.

10" Backsaver Intake Auger Pivot Hopper

SINGLE FLIGHTING HOPPER



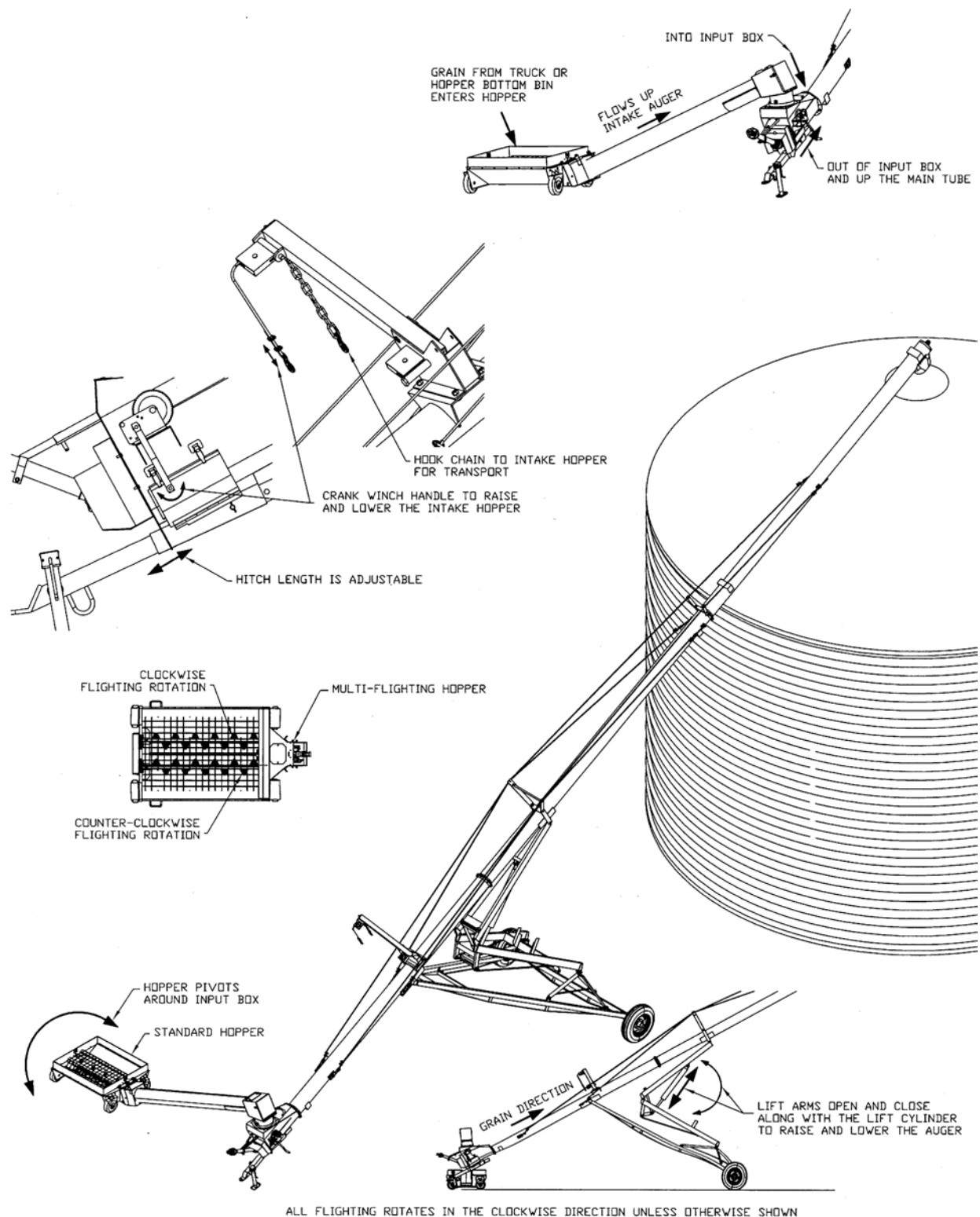
MULTI FLIGHTING HOPPER



ALERT

All heights shown are for the welded hopper only. These heights remain the same at all auger working angles because of the pivot joint between the hopper and the intake auger.

Theory of Operation



Maintenance

Maintenance and Lubrication

- Check condition of winch cable occasionally. Be sure it is lubricated.
- Check to see that there is no downward bow in the main tubes at the start of every augering season. Re-tension cables if required as per step number four in the assembly instructions. This should also be checked immediately after hauling the auger for a long distance.
- Use a high temperature grease for all lubrication.
- Lubricate the PTO shaft as per instruction sheet.
- Check grease on end thrust bearing to be sure it is running smoothly and freely. Remove cap and grease at the start of every season.
- Check hydraulic lines frequently for leaks or damage.
- Grease u-joint in intake auger after 8 hours of use.
- Grease the u-joint connecting the two gearboxes about every 8 hours. Do regular checks on the oil level in the gearboxes. Fill if necessary to the height of the side plug using SAE 90 oil. Because the gearbox runs in the grain, it is difficult to see any oil leaks so regular checks should be done.



ALERT

When replacing bearings or tightening a loose bearing collar, always tighten collar in the direction of shaft rotation using a centre punch or a similar tool.

- Recommended tire pressure is 35 psi. (240 kPa)

Storage

- The auger should be stored in a dry place if possible. If stored outside, lower auger to its lowest position and block up the wheels so auger will not move.
- Clean auger thoroughly as dirt draws moisture and causes metal to rust. If the auger has been used to move fertilizer, clean thoroughly and apply oil or grease on entire flighting and inside the housing to stop and prevent further corrosion.
- At this time check all moving parts for wear and order replacement parts from your nearest dealer.
- When taking the auger out of storage, clean it thoroughly and check for obstructions at the inlet and outlet ends.
- Check all bolts and set screws.

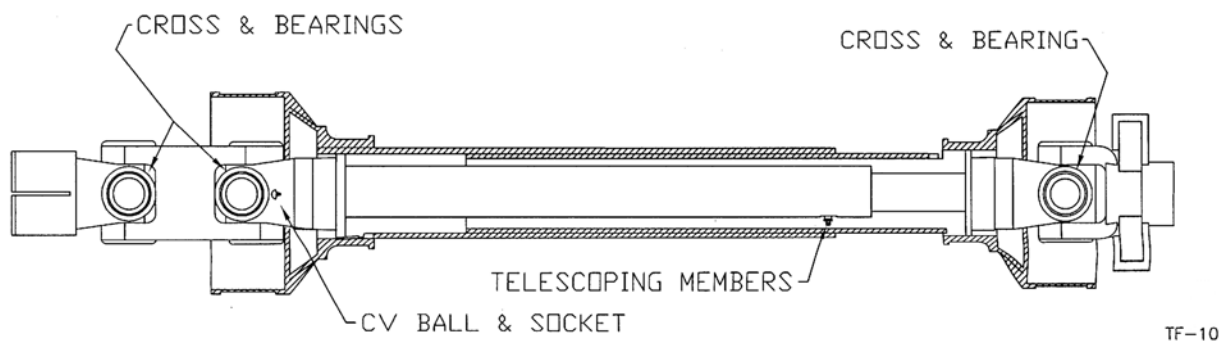
Greasing Procedure

A general purpose grease may be used, however, a grease containing 3% molybdenum disulfide will allow the lube intervals to be extended to twice as long as that listed. The first lube interval should be 16-24 hours of operation after initial start-up then follow the schedule below. Constant angle applications must have a lube interval of 4 hours.

Lube Recommendations		
Interval	Location	Amount
8 hrs	Cross & Bearings	1 pump
8 hrs	Telescoping Members	4-8 pumps (until grease comes out of end)
8 hrs	CV Ball & Socket	1-2 pumps

Grease containing various percentages of molybdenum disulfide are available as extreme pressure greases. Please note that all E.P. greases do not contain moly. So some investigation may be necessary. The following greases all contain 3% moly:

- Mobile Oil Company "Mobile Grease CMP"
- Shell Oil Company "Retinax AM"
- Texaco "Molytex EP #0 and #2"

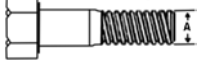





Regularly check the tightness of all cable clamps to avoid slipping.

Bolt Torque

Checking Bolt Torque

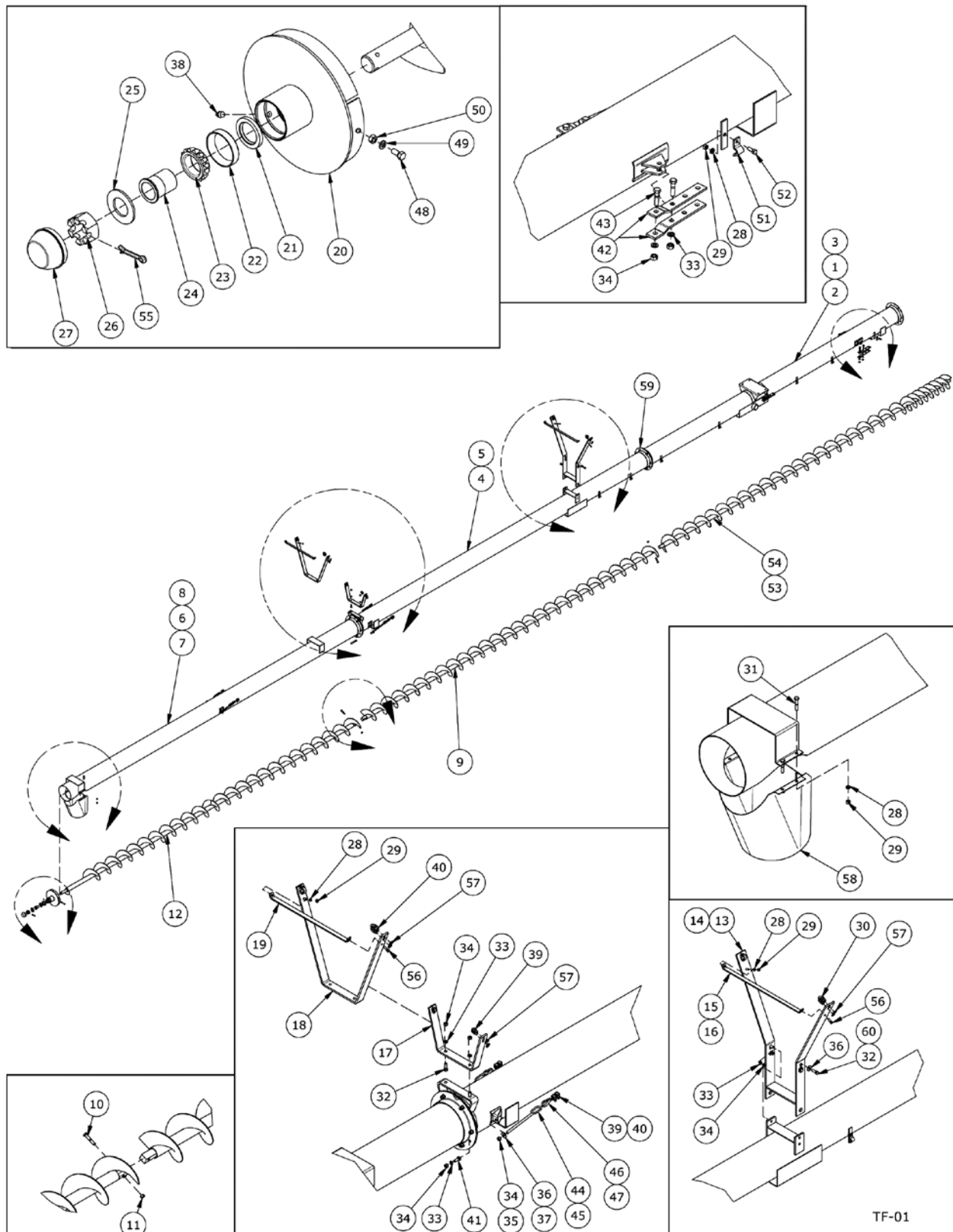
The tables shown below give correct torque values for various bolts and hex bolts. Tighten all bolts to the torques specified in chart unless otherwise noted. Check tightness of bolts periodically, using bolt torque chart as a guide. Replace hardware with the same strength bolt.

Bolt Torque*						
						
Bolt Diameter	Grade 2 Bolts		Grade 5 Bolts		Grade 8 Bolts	
(inches)	SAE 2		SAE 5		SAE 8	
"A"	(lb-ft)	(N.m)	(lb-ft)	(N.m)	(lb-ft)	(N.m)
0.25 (1/4)	6	8	9	12	12	17
0.313 (5/16)	10	13	19	25	27	36
0.375 (3/8)	20	27	33	45	45	63
0.438 (7/16)	30	42	53	72	75	100
0.5 (1/2)	45	61	80	110	115	155
0.563 (9/16)	70	95	115	155	165	220
0.625 (5/8)	95	128	160	215	220	305
.75 (3/4)	165	225	290	390	400	540
0.875 (7/8)	170	230	420	570	650	880
1	225	345	630	850	970	1320

Torque figures indicated above are valid for non-greased or non-oiled threads and heads unless otherwise specified. Therefore, do not grease or oil bolts or hex bolts unless otherwise specified in this manual. When using locking elements, increase torque values by 5%.

*Torque value for bolts and hex bolts are identified by their head markings.

Auger Assembly Drawing



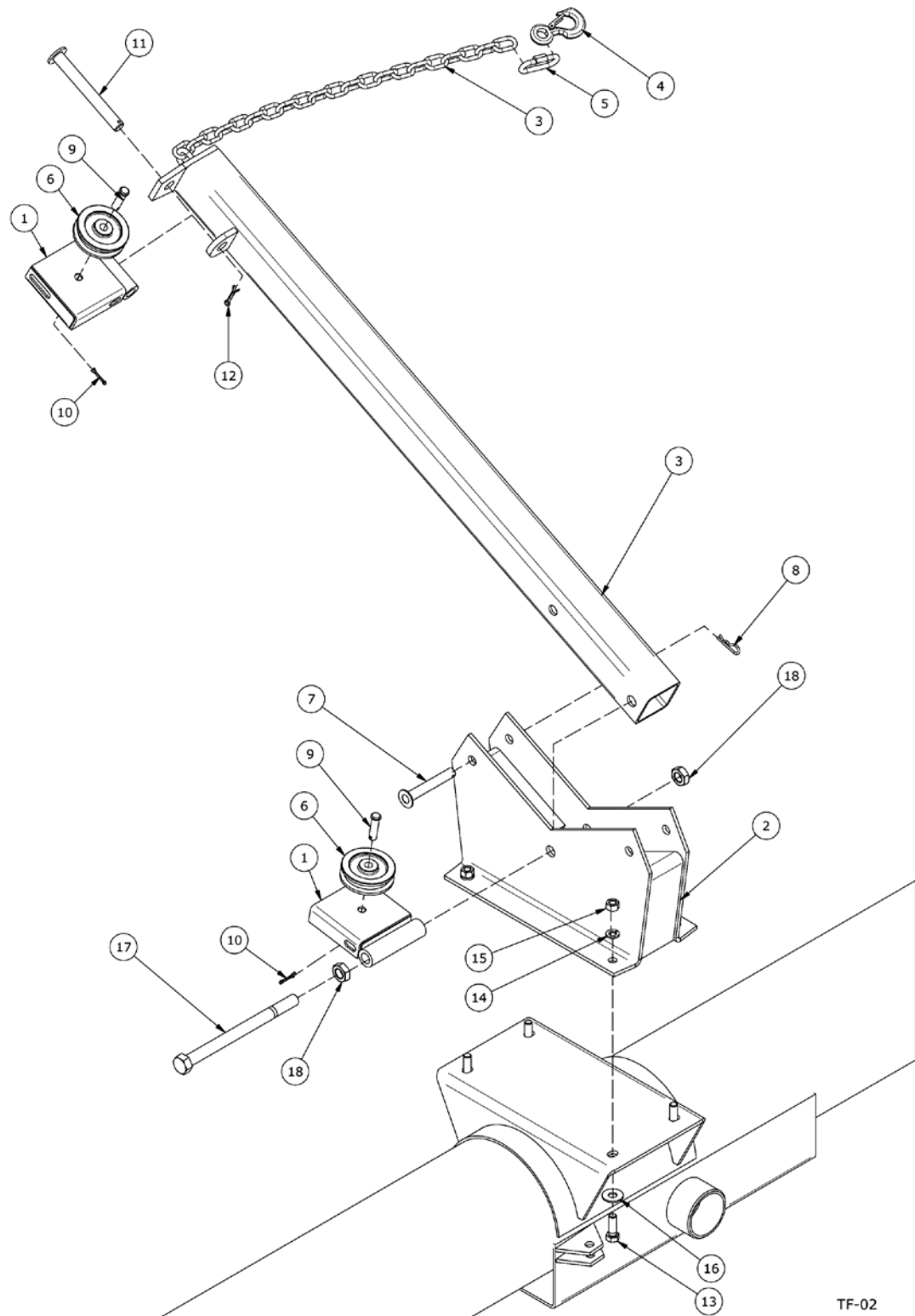
When Ordering Parts

Always give your dealer the Model, Color and Serial Number of your machine to assist him in ordering and obtaining the correct parts. Use the exploded view and tabular listing of the area of interest to exactly identify the required part.

Item	Part Number	Description
1	905644	27' 4" Bottom Section Tubing, 50'
2	905645	17' 4" Bottom Section Tubing, 60'
3	905646	27' 4" Bottom Section Tubing, 70'
4	960004	20' Center Section Tubing, 60'
5	960005	20' Center Section Tubing, 70'
6	960006	20' Top Section Tubing, 50'
7	960007	20' Top Section Tubing, 60'
8	960008	20' Top Section Tubing, 70'
9	960011	20' Center Flighting, 60' & 70'
10	9812368	1/2" x 2-3/4" Gr8 Hex Bolt (PL)
11	812364	1/2" Lock Nut
12	960012	20' Top Flighting, All Sizes
13	960014	Main Bridging Yoke, 50' & 60'
14	960015	Main Bridging Yoke, 70'
15	960016	Main Bridging Tie Rod, 50' & 60'
16	960017	Main Bridging Tie Rod, 70'
17	960018	Upper Bridging Yoke, 50' & 60'
18	960019	Upper Bridging Yoke, 70'
19	960020	Upper Bridging Tie Rod, 70'
20	960034	Top End Plate
21	960125	Oil Seal (CR14939)
22	967709	Inner Bearing Cup (LM29710)
23	967708	Inner Bearing Cone (LM29749)
24	960035	End Bearing Sleeve
25	9812442	1-1/4 x 10 ga Narrow Rim Washer
26	960037	Slotted Hex Nut 1-1/4" UNF
27	967209	Dust Cap (DC15)
28	81593	3/8" Lock Washer
29	81592	3/8" Hex Nut
30	964565	1/2" Cable Clamp, All Sizes
31	967291	3/8" x 2" Full Thread Hex Bolt
32	84277	1/2" x 1-1/2" Hex Bolt
33	81637	1/2" Lock Washer
34	81636	1/2" Hex Nut, 50' & 60'
35	81700	3/4" Hex Nut, 70'
36	81638	1/2" Flat Washer, 50' & 60'

Item	Part Number	Description
37	84050	3/4" Flat Washer, 70'
38	967164	Drive-In Grease Zerk
39	964264	3/8" Cable Clamp, 50' & 60'
40	964565	1/2" Cable Clamp, 70'
41	81620	1/2" x 1-1/4" Hex Bolt
42	960244	Cable Yoke
43	811791	1/2" x 2" Hex Bolt
44	960031	1/2" x 7-7/8" Cable Tightener, 50' & 60'
45	960032	3/4" x 7-7/8" Cable Tightener, 70'
46	964267	3/8" Cable Thimble, 50' & 60'
47	964587	1/2" Cable Thimble, 70'
48	81549	5/16" x 3/4" Hex Bolt
49	81569	5/16" Lock Washer
50	81568	5/16" Hex Nut
51	960140	Hydraulic Line Clamp
52	86170	3/8" x 1" Hex Bolt
53	911117	20' Bottom Flighting, 50' & 70'
54	911119	20' Bottom Flighting, 60'
55	967459	Cotter Pin - 1/4" x 1 3/4"
56	86171	3/8" x 1-1/4" Hex Bolt
57	964001	1" x 7/16" x 10GA Flat Washer
58	F9047	Discharge Spout
59	960033	10" Connection Ring
60	87553	1/2" x 1-3/4" Hex Bolt, 70'

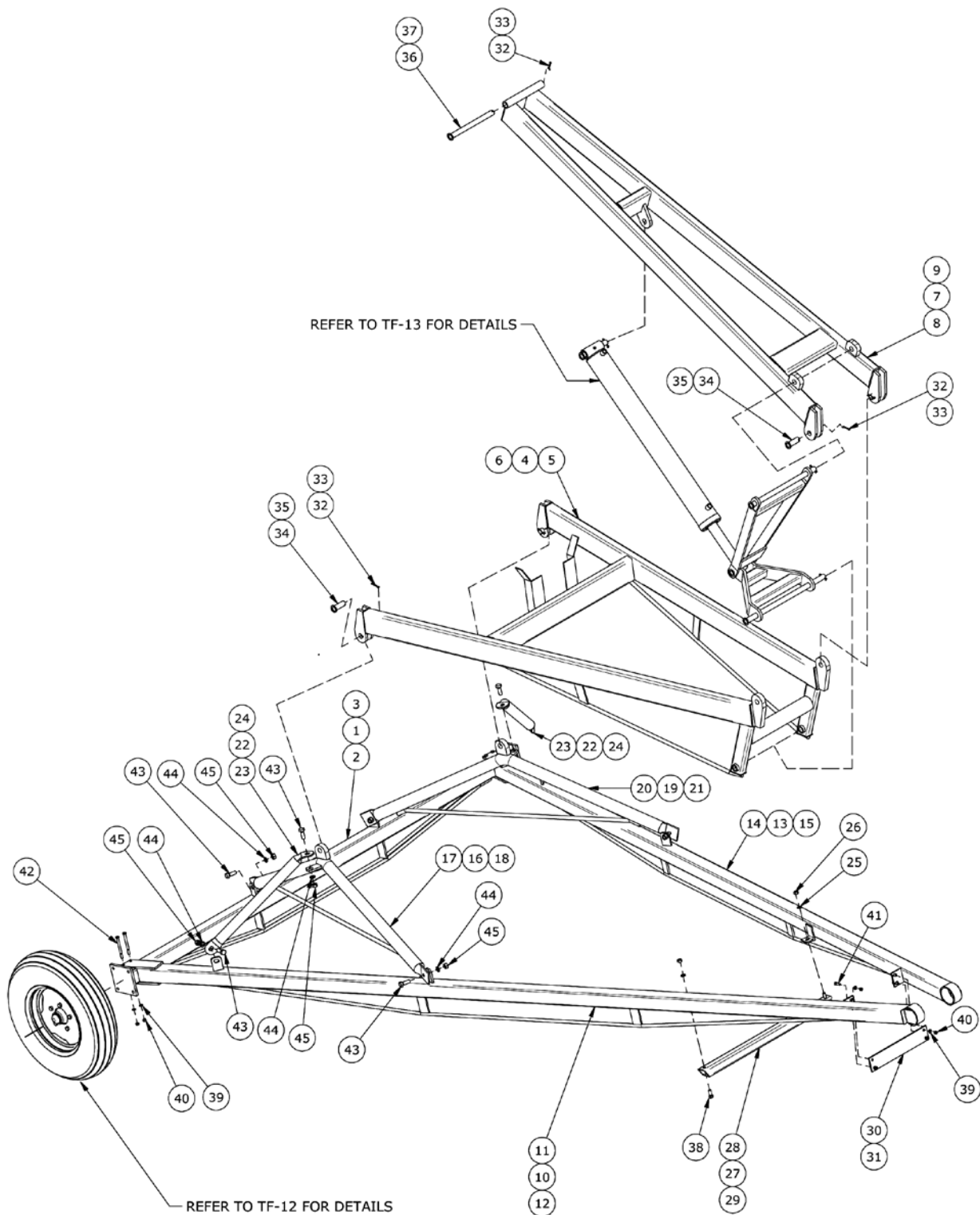
Lift Boom Arm Components Drawing



TF-02

Item	Part Number	Description
1	905602	Pulley Holder
2	905601	Lift Boom
3	905604	Lift Boom Arm
4	960041	Hook with Latch
5	960167	5/16" Quick Link
6	961846	Cable Pulley, 1/2 Bore
7	905568	Pin 5/8" x 4-1/4"
8	961012	#16 Hair Pin Clip
9	960913	1/2" x 1-13/16" Clevis Pin
10	9812430	1/8" x 1" Cotter Pin
11	905570	3/4" x 6-3/8" Pin
12	9812433	3/16" x 1-1/2" Cotter Pin
13	84277	1/2" x 1-1/2" Hex Bolt
14	81637	1/2" Lock Washer
15	81636	1/2" Hex Nut
16	81638	1/2" Flat Washer
17	811803	3/4" x 10" Hex Bolt
18	86111	3/4" Jam Hex Nut

Undercarriage Components Drawing

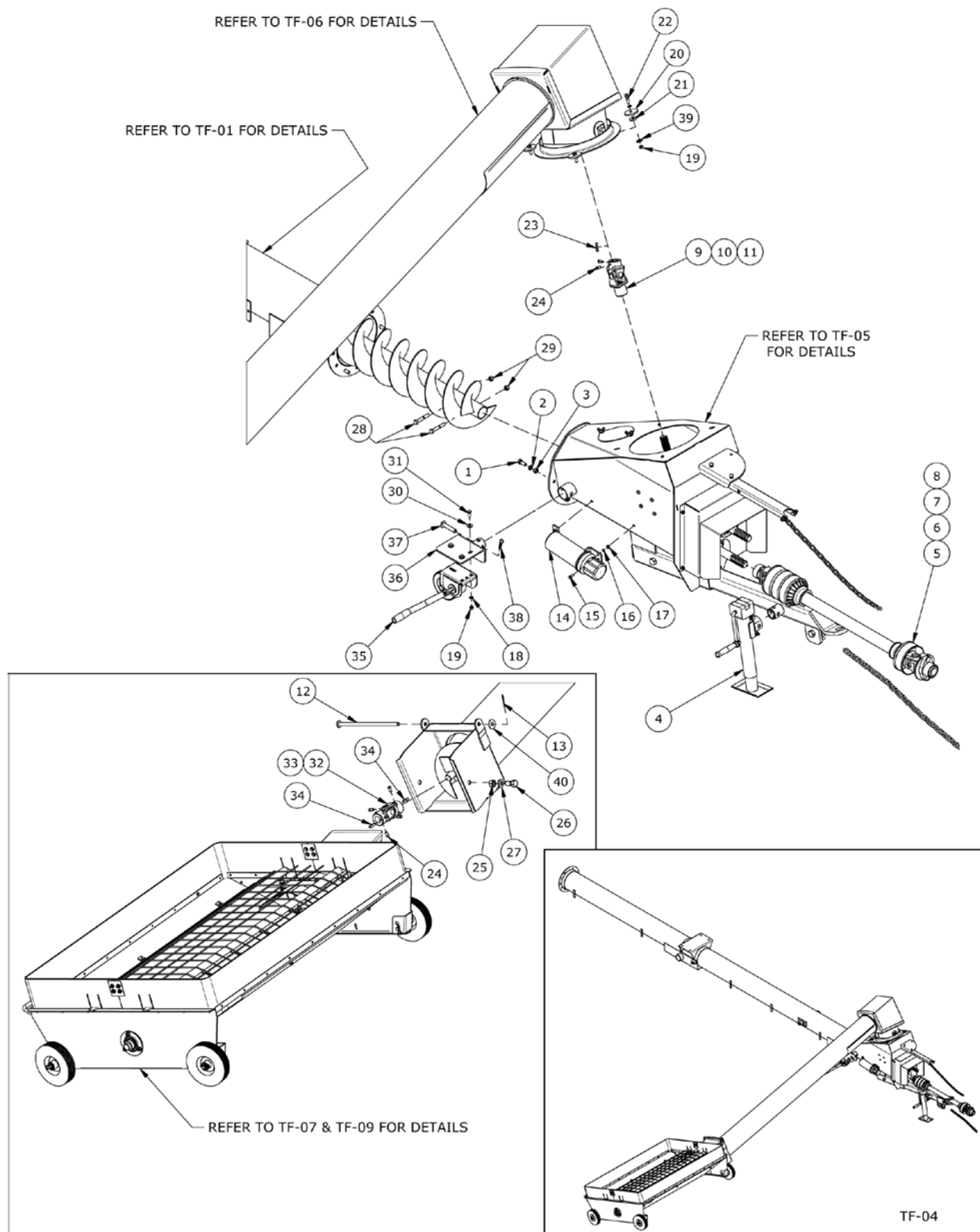


TF-03

Item	Part Number	Description
1	F0171	96" Axle, 50'
2	F0172	108" Axle, 60'
3	F0173	132" Axle, 70'
4	F9024	82-1/16" Lower Lift Arm, 50'
5	F9025	94-13/16" Lower Lift Arm, 60'
6	F9026	108" Lower Lift Arm, 70'
7	F9021	82-1/4" Upper Lift Arm, 50'
8	F9022	94-3/4" Upper Lift Arm, 60'
9	F9023	108" Upper Lift Arm, 70'
10	F9253	153" Right Hand Und. Arm, 50'
11	F9251	184" Right Hand Und. Arm, 60'
12	F9249	202" Right Hand Und. Arm, 70'
13	F9252	153" Left Hand Und. Arm, 50'
14	F9250	184" Left Hand Und. Arm, 60'
15	F9248	202" Left Hand Und. Arm, 70'
16	960079	54-1/2" Right Hand Und. Arch, 50'
17	960080	80" Right Hand Und. Arch, 60'
18	960081	85" Right Hand Und. Arch, 70'
19	960082	54-1/2" Left Hand Und. Arch, 50'
20	960083	80" Left Hand Und. Arch, 60'
21	960084	85" Left Hand Und. Arch, 70'
22	960085	19-1/2" Arch Brace, 50'
23	960086	30" Arch Brace, 60'
24	960087	35" Arch Brace, 70'
25	81637	1/2" Lock Washer
26	81636	1/2" Hex Nut
27	904980	33-1/4" Lift Arm Cradle, 50'
28	904981	36" Lift Arm Cradle, 60'
29	904982	41" Lift Arm Cradle, 70'
30	960088	16" Tie Plate, 50' & 60'
31	960089	18" Tie Plate, 70'
32	9812433	3/16" x 1-1/2" Cotter Pin, 50' & 60'
33	81210	1/4" x 2" Cotter Pin, 70'
34	960107	1" x 2-13/16" Lift Arm Clevis Pin, 50' & 60'
35	960108	1-1/4" x 2-13/16" Lift Arm Clevis Pin, 70'
36	960105	1" x 11-7/8" Lift Arm Pivot Pin, 50' & 60'
37	960106	1" x 12-1/4" Lift Arm Pivot Pin, 70'
38	81620	1/2" x 1-1/4" Hex Bolt
39	81593	3/8" Lock Washer
40	81592	3/8" Hex Nut
41	86170	3/8" x 1" Hex Bolt

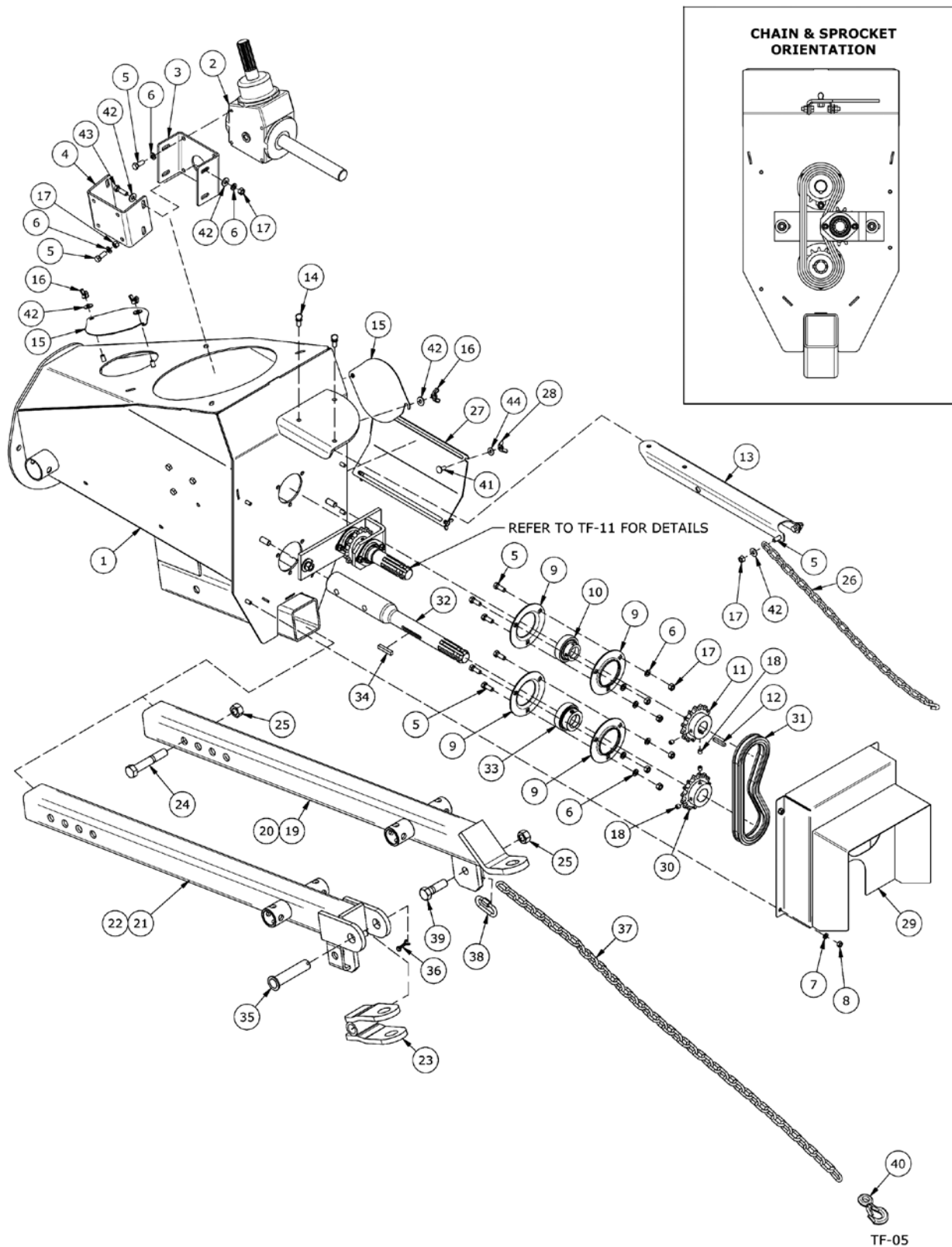
Item	Part Number	Description
42	81588	3/8" x 4-1/2" Hex Bolt
43	84270	5/8" x 1-3/4" Hex Bolt
44	81677	5/8" Lock Washer
45	81676	5/8" Hex Nut

Hopper and Auger Assembly Drawing



Item	Part Number	Description
1	81620	1/2" x 1-1/4" Hex Bolt
2	81637	1/2" Lock Washer
3	81636	1/2" Hex Nut
4	960327	Jack Side Crank
5	F9043	PTO Shaft, CV-10" (2-6 Splined Ends)
6	936218	6-Spline End Yoke
7	936166	Tractor Half PTO, 10" (6 Splined End)
8	908718	Auger Half PTO, 10" (6 Splined End)
9	960393	U-Joint (Ø1-1/4" ID)
10	906546	Extended Life Repair Kit (Standard)
11	936224	Repair Kit (Optional)
12	960349	Pivot Hopper Lid Rod
13	12780	#7 Hair Pin Clip
14	909277	Manual Holder
15	81549	5/16" x 3/4" Hex Bolt
16	81569	5/16" Lock Washer
17	81568	5/16" Hex Nut
18	81593	3/8" Lock Washer
19	81592	3/8" Hex Nut
20	960495	Input Box Ring Clamp 13/32" ID x 2-13/32" OD
21	960494	13/32" x 1-1/4" OD Flat Washer
22	811792	3/8" x 1-1/2" Hex Bolt
23	900930	Key Sheave 1/4" x 1-1/2"
24	9812378	3/8" x 3/4" Square Head Set Screw (SER)
25	812365	3/4" Lock Nut
26	967437	3/4" x 1-5/8" Hex Bolt
27	84050	3/4" SAE Flat Washer
28	81627	1/2" x 3" Hex Bolt
29	812364	1/2" Lock Nut
30	84000	7/16" Flat Washer
31	86170	3/8" x 1" Hex Bolt
32	960547	Universal Joint (1140 Series) 1-1/4" Ends w/ 5/16" Keyway
33	936079	Repair Kit only for U-joint
34	960180	5/16" x 1-3/8" U-Joint & Sprocket Key
35	960150	Winch (FULTON - K1051)
36	911000	Winch Mount
37	902486	Skid Pin 5/8" x 3-1/8"
38	961012	#16 Hair Pin Clip
39	964001	1" x 7/16" x 10GA Flat Washer
40	81678	11/16" Flat Washer (PL)

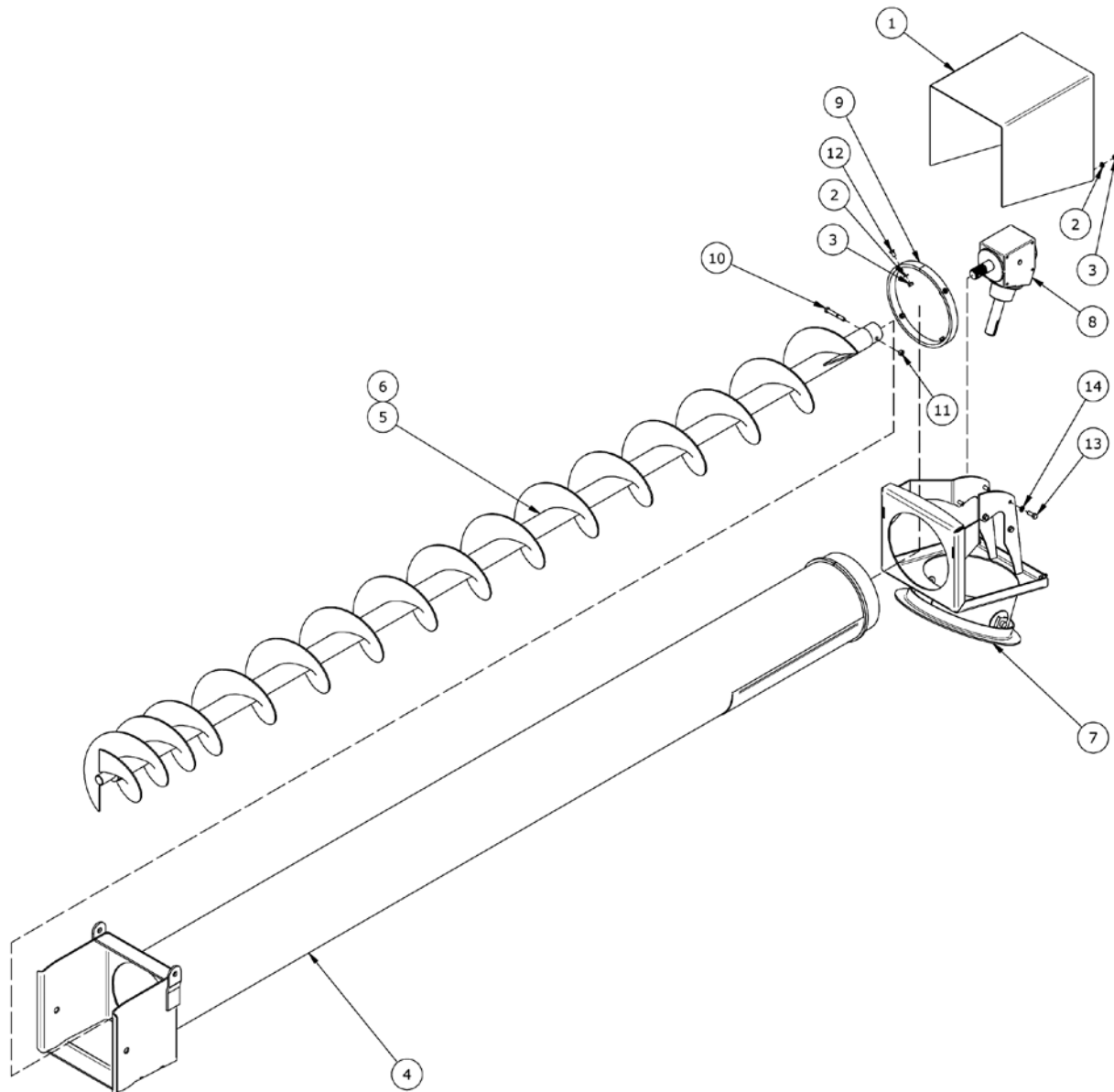
Input Box Assembly Drawing



Item	Part Number	Description
1	911058	Input Box
2	960953	2168 Gearbox
3	911064	Gearbox Bracket (Inside)
4	911066	Gearbox Bracket (Outside)
5	86170	3/8" x 1" Hex Bolt
6	81593	3/8" Lock Washer
7	81569	5/16" Lock Washer
8	81568	5/16" Hex Nut
9	961675	Bearing Flange 72MS
10	961676	1-1/4" Bearing AEL207-104(RHP #1230)
11	961684	Sprocket - 60B15 (1.25" Bore)
12	900930	Key 1/4" x 1-1/2"
13	911111	PTO Holder Arm
14	911943	3/8" x 3/4" Thumb Screw
15	910892	Lid
16	84217	3/8" Wing Nut
17	81592	3/8" Hex Nut
18	988999	3/8" x 3/8" Socket Set Screw
19	909955	3" Square x 48" Hitch Tube
20	911395	3" Square x 54" Hitch Tube (6" Extension)
21	909957	3" Square x 45" Hitch Tube (Option)
22	911396	3" Square x 51" Hitch Tube (Option) (6"Extension)
23	960927	Clevis (Option - Required w/ Hitch Option)
24	811790	3/4" x 4 /12" Grade 5 Hex Bolt
25	812365	3/4" Lock Nut
26	909703	PTO Holder Chain Assembly
27	911068	Clean-out Lid
28	968601	5/16" Wing Nut
29	911063	Chain Drive Guard
30	911116	Sprocket - 60B15 (1.375" Bore)
31	960493	#60 Chain - 38 Links
32	911144	Drive Stub Shaft
33	965917	1-3/8" Bearing
34	911394	Key 5/16" Square x 58mm
35	960928	Clevis Pin 1" x 4-3/4"
36	9812434	1/4" x 1-1/2" Cotter Pin
37	910287	Safety Chain (1/4") G70
38	960167	5/16" Quick Link
39	84346	3/4" x 2-1/2" Hex Bolt
40	960041	Hook w/ Latch

Item	Part Number	Description
41	81185	5/16" x 3/4" Carriage Bolt
42	81570	3/8" Std Flat Washer
43	86171	3/8" x 1-1/4" Hex Bolt
44	81546	5/16" Flat Washer

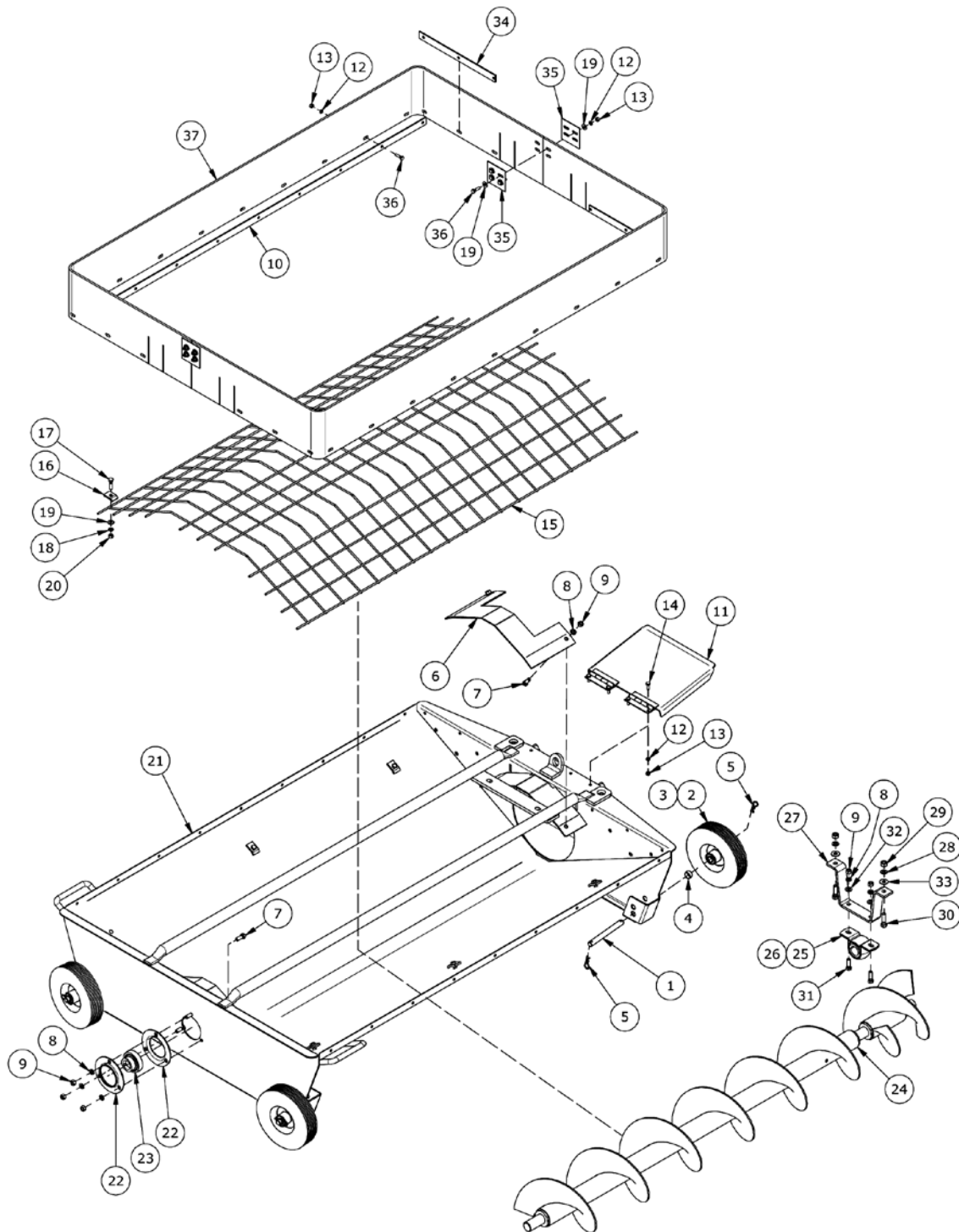
Intake Auger Drawing



TF-06

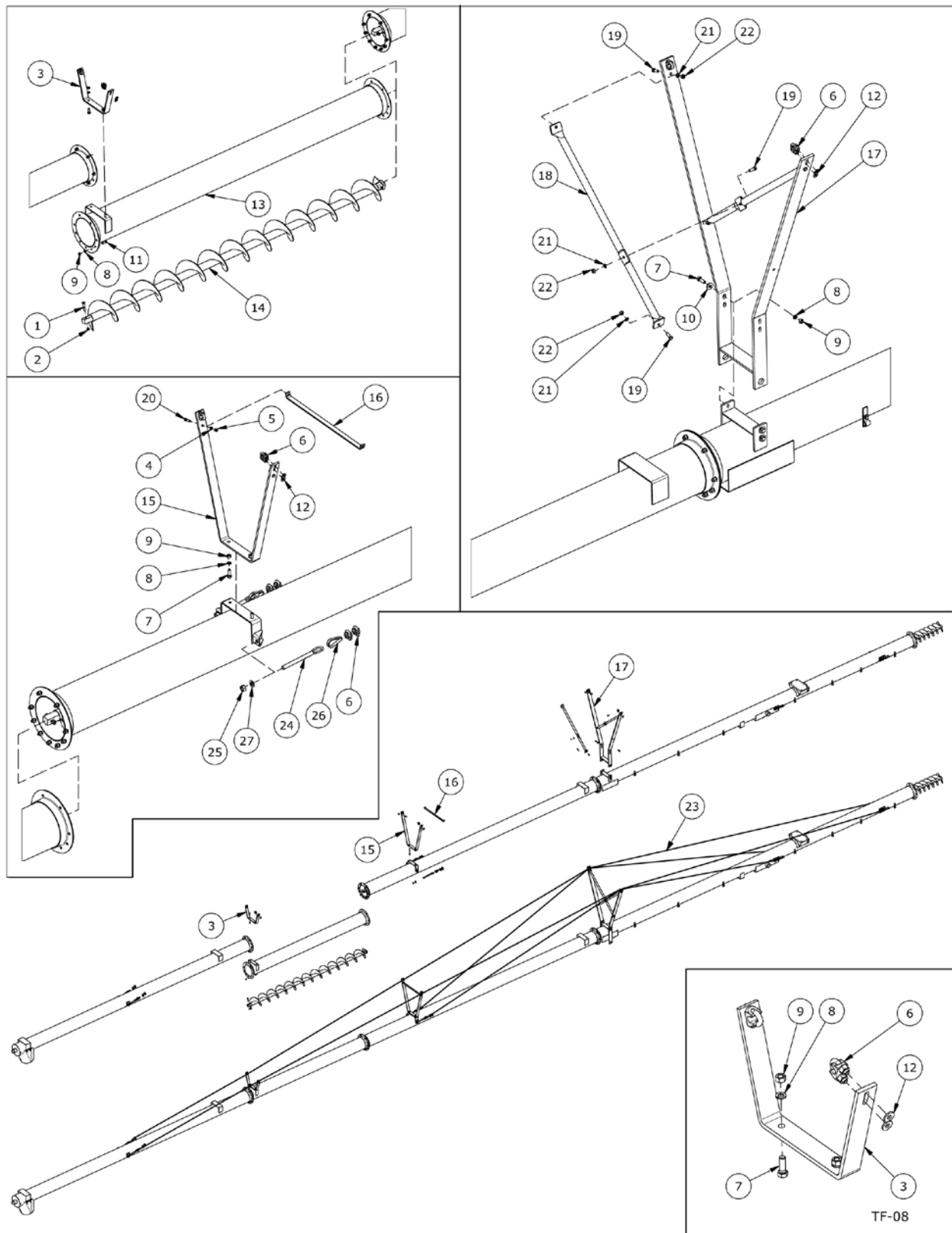
Item	Part Number	Description
1	911074	Intake Topbox Cover
2	81569	5/16" Lock Washer
3	81568	5/16" Hex Nut
4	911089	Intake Auger Tube (10" BS)
5	960941	Intake Auger Flighting
6	903214	Splined Coupler
7	911082	Intake Topbox
8	960952	2168 Gearbox
9	960481	Intake Auger Tube Ring (Ø10"ID)
10	967906	3/8" x 2-3/4" Hex Bolt
11	812363	3/8" Lock Nut
12	967163	5/16" x 3/4" Flat Head Socket Bolt
13	9812355	3/8" x 1" Hex Bolt
14	81593	3/8" Lock Washer

Single-flighting Hopper



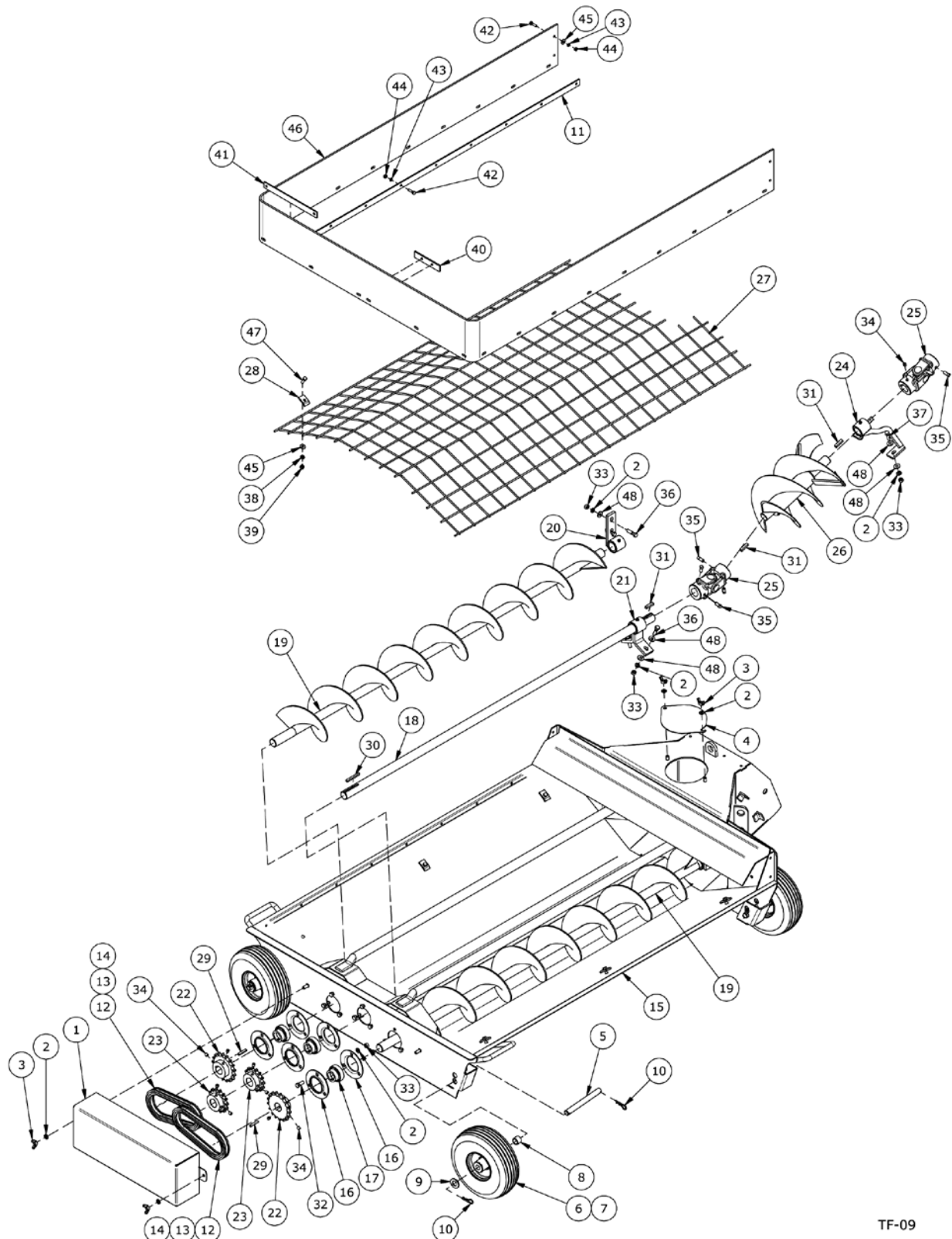
Item	Part Number	Description
1	911104	Hopper Wheel Pin
2	960048	2-1/2" x 8" Wheel
3	960600	Wheel Bearing Only
4	911105	Hopper Wheel Spacer
5	961012	#16 Hair Pin Clip
6	960929	Extension Deflector 7.5" x 16.25"
7	86170	3/8" x 1" Hex Bolt
8	81593	3/8" Lock Washer
9	81592	3/8" Hex Nut
10	960660	Rubber Reinforcement 1" x 57.25"
11	911092	Pivot Hopper Lid
12	81545	1/4" Lock Washer
13	81544	1/4" Hex Nut
14	81525	1/4" x 3/4" Hex Bolt
15	911106	Hopper Cage
16	910898	Cage Mounting Plate
17	81552	5/16" x 1-1/4" Hex Bolt
18	81569	5/16" Lock Washer
19	81546	5/16" Flat Washer
20	81568	5/16" Hex Nut
21	911107	Single Flighting Hopper
22	961675	Bearing Flange 72MS
23	961676	1-1/4" Bearing AEL206-104 (RHP #1230)
24	909923	10" Intake Flighting
25	960658	1-1/4" Wooden Bearing & Flange Set
26	960659	1-1/4" Wooden Bearing Only
27	911110	Bearing Holder
28	81615	7/16" Lock Washer
29	81614	7/16" Hex Nut
30	81599	7/16" x 1-1/2" Hex Bolt
31	86171	3/8" x 1-1/4" Hex Bolt
32	84039	3/8" Flat Washer
33	84000	7/16" Flat Washer
34	960661	Reinforcement Rubber 1" x 13"
35	903483	3" x 3" Rubber Connector Plate
36	81527	1/4" x 1" Hex Bolt
37	911399	Rubber Standard Hopper Edging

10" x 10' Extension Drawing



Item	Part Number	Description
1	9812368	1/2" x 2-3/4" Gr8 Hex Bolt (PL)
2	812364	1/2" Lock Nut
3	960018	Upper Bridging Yoke
4	81593	3/8" Lock Washer
5	81592	3/8" Hex Nut
6	964565	1/2" Cable Clamp
7	84277	1/2" x 1-1/2" Hex Bolt
8	81637	1/2" Lock Washer
9	81636	1/2" Hex Nut
10	81638	1/2" Flat Washer
11	81620	1/2" x 1-1/4" Hex Bolt
12	964001	1" x 7/16" x 10GA Flat Washer
13	960401	10" x 10' Extension Tube
14	960402	10" x 10' Extension Flighting
15	960403	Center Section Bridging Yoke
16	960404	Center Section Bridging Tie Bar
17	960405	Main Bridging Yoke
18	960608	Main Bridging Brace
19	81598	7/16" x 1-1/4" Hex Bolt
20	811792	3/8" x 1-1/2" Hex Bolt
21	81615	7/16" Lock Washer
22	81614	7/16" Hex Nut
23	F9139	Cable Bundle (Upper & Lower Cables)
24	960032	3/4" x 7-7/8" Cable Tightener
25	81700	3/4" Hex Nut
26	964587	1/2" Cable Thimble
27	84050	3/4" SAE Flat Washer

Multi-flighting Hopper Drawing

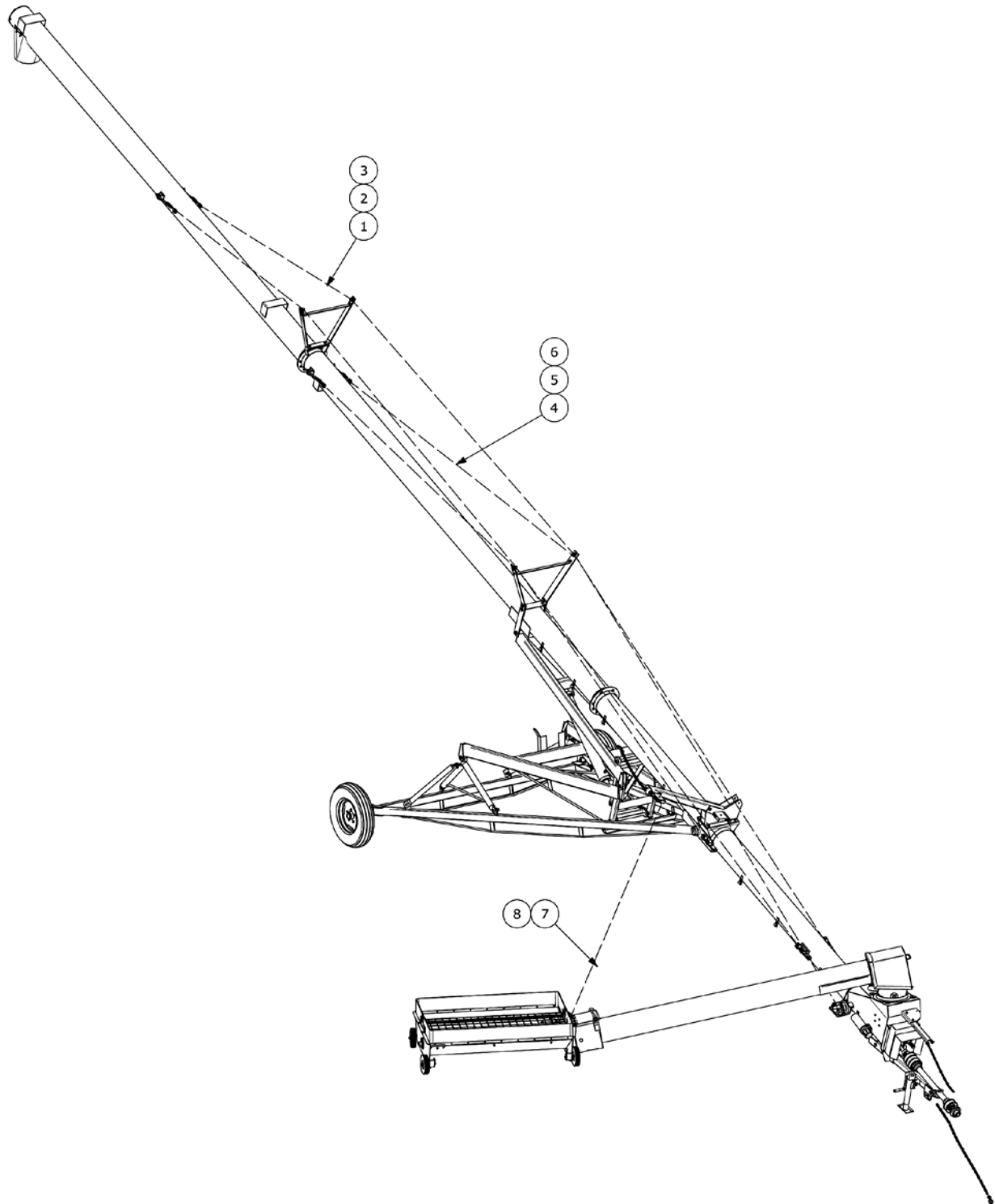


TF-09

Item	Part Number	Description
1	910900	Chain Guard
2	81593	3/8" Lock Washer
3	84217	3/8" Wing Nut
4	910892	Lid
5	910916	Pin Hopper Wheel 19 x 187 mm
6	960714	Wheel w/Tire 4.10/3.50
7	966598	Wheel Bearing Only
8	910917	Spacer Wheel 25 mm OD x 19 mm
9	84050	3/4" SAE Flat Washer
10	961012	#16 Hair Pin Clip
11	960660	Rubber Reinforcement 1" x 57.25"
12	906480	Chain Assy #60 x 32 Pitches
13	TS60H-1R-OF	Link Offset #60 Heavy
14	TS60HAT-1R-CO	Link Connector #60 Heavy
15	910910	10" Multi Flighting Hopper
16	961637	Bearing Flange 62MS
17	965818	1-1/4" Bearing AEL206-104 (RHP #1230)
18	909901	Center Flighting Shaft
19	909908	Outside Flighting
20	905844	Outside Flighting Holder
21	905842	Center Shaft Holder
22	960492	60B17 Sprocket
23	905562	60B14 Sprocket
24	905840	Center Flighting Holder
25	960547	Universal Joint (1140 Series) 1-1/4" Ends w/ 5/16" Keyway
26	906446	Final Center Flighting
27	911126	Hopper Cage
28	910898	Cage Mounting Plate
29	963026	1/4" Sq. x 1-1/2" Key
30	905369	Key 1/4" Square x 2-1/2"
31	960180	5/16" x 1-3/8 " U-Joint & Sprocket Key
32	86170	3/8" x 1" Hex Bolt
33	81592	3/8" Hex Nut
34	988999	3/8" x 3/8" Socket Set Screw
35	9812378	3/8" x 3/4" Square Head Set Screw (SER)
36	811792	3/8" x 1-1/2" Hex Bolt
37	86171	3/8" x 1-1/4" Hex Bolt
38	81569	5/16" Lock Washer
39	81568	5/16" Hex Nut
40	960834	Rubber Reinforcement Plate
41	960837	Back Rubber Reinforcement Plate

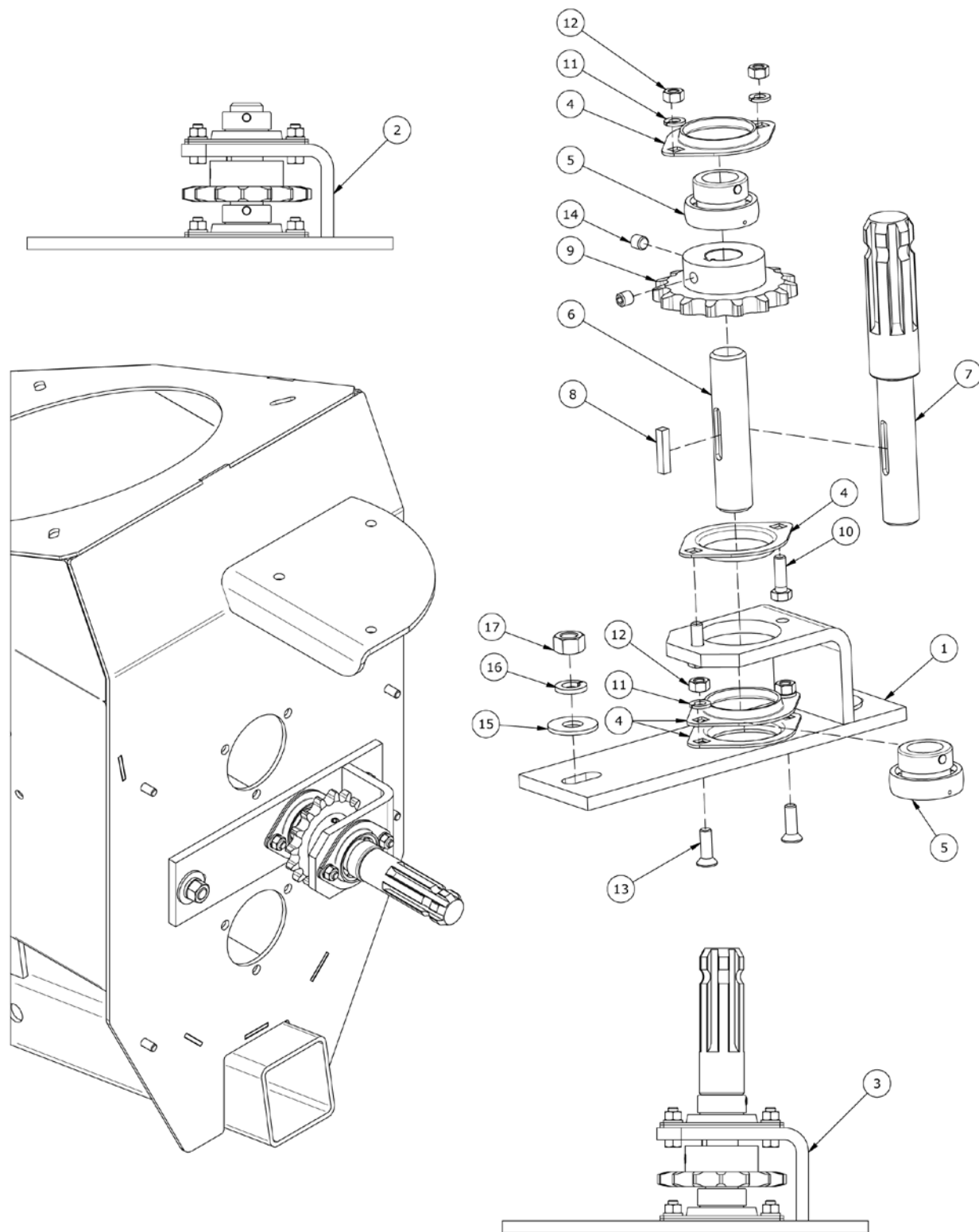
Item	Part Number	Description
42	81527	1/4" x 1" Hex Bolt
43	81545	1/4" Lock Washer
44	81544	1/4" Hex Nut
45	81546	5/16" Flat Washer
46	911359	Rubber Edging
47	812026	5/16" x 1" Hex Bolt
48	81570	3/8" Std Flat Washer

Cables Drawing



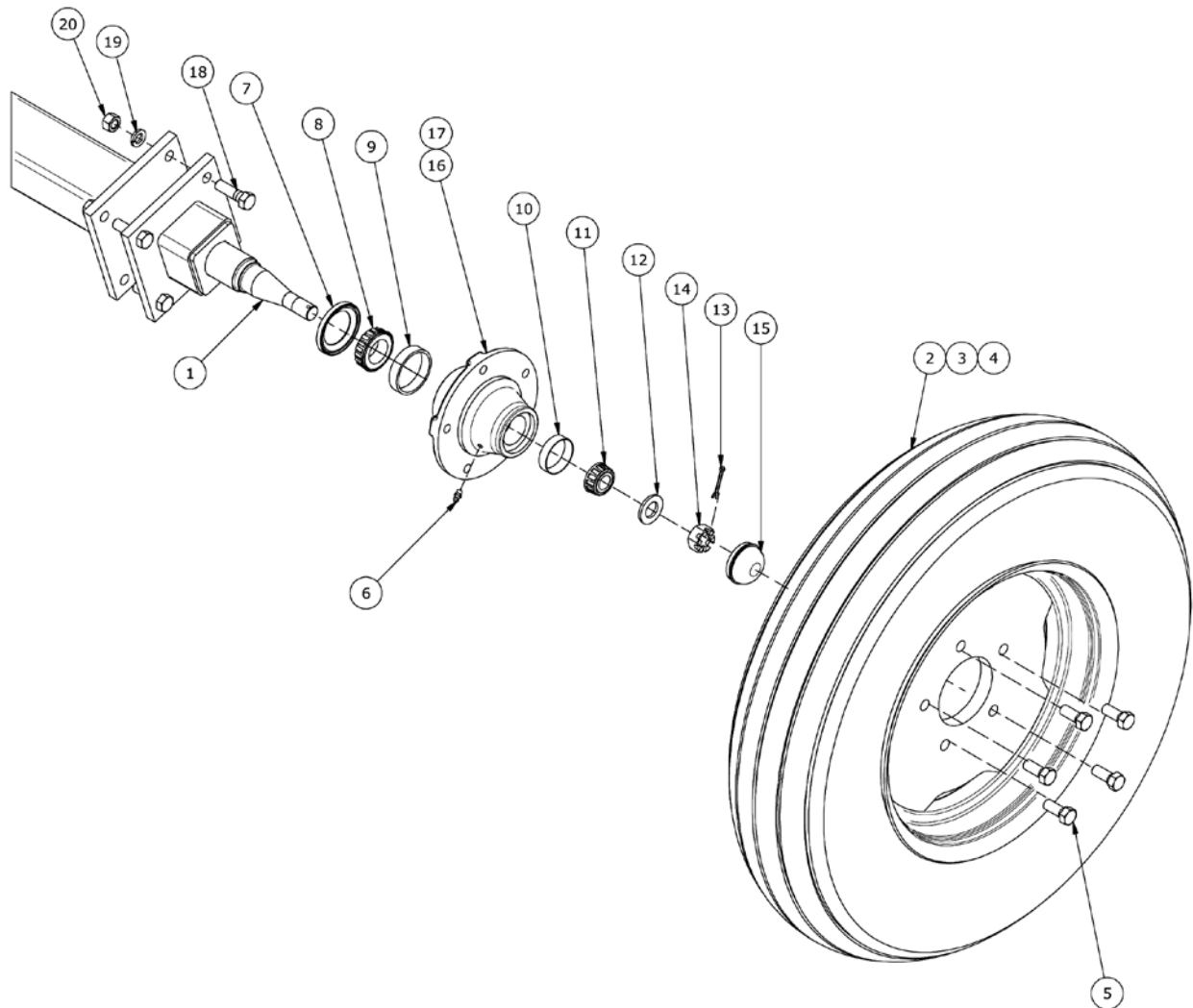
Item	Part Number	Description
1	903714	Lower Cable Bundle Left & Right 3/8" x 23'-6", 50'
2	903717	Lower Cable Bundle Left & Right 3/8" x 29', 60'
3	905525	Lower Cable Bundle Left & Right 3/8" x 33'-3", 70'
4	903718	Upper Cable Bundle Left & Right 3/8" x 38'-4", 50'
5	903719	Upper Cable Bundle Left & Right 3/8" x 45'-6", 60'
6	905526	Upper Cable Bundle Left & Right 3/8" x 56'-11", 70'
7	960040	Intake Lift Cable, 1/4" x 28'-3" (Assembled)
8	961658	1/4" Cable Clamp

Idler Assembly Drawing



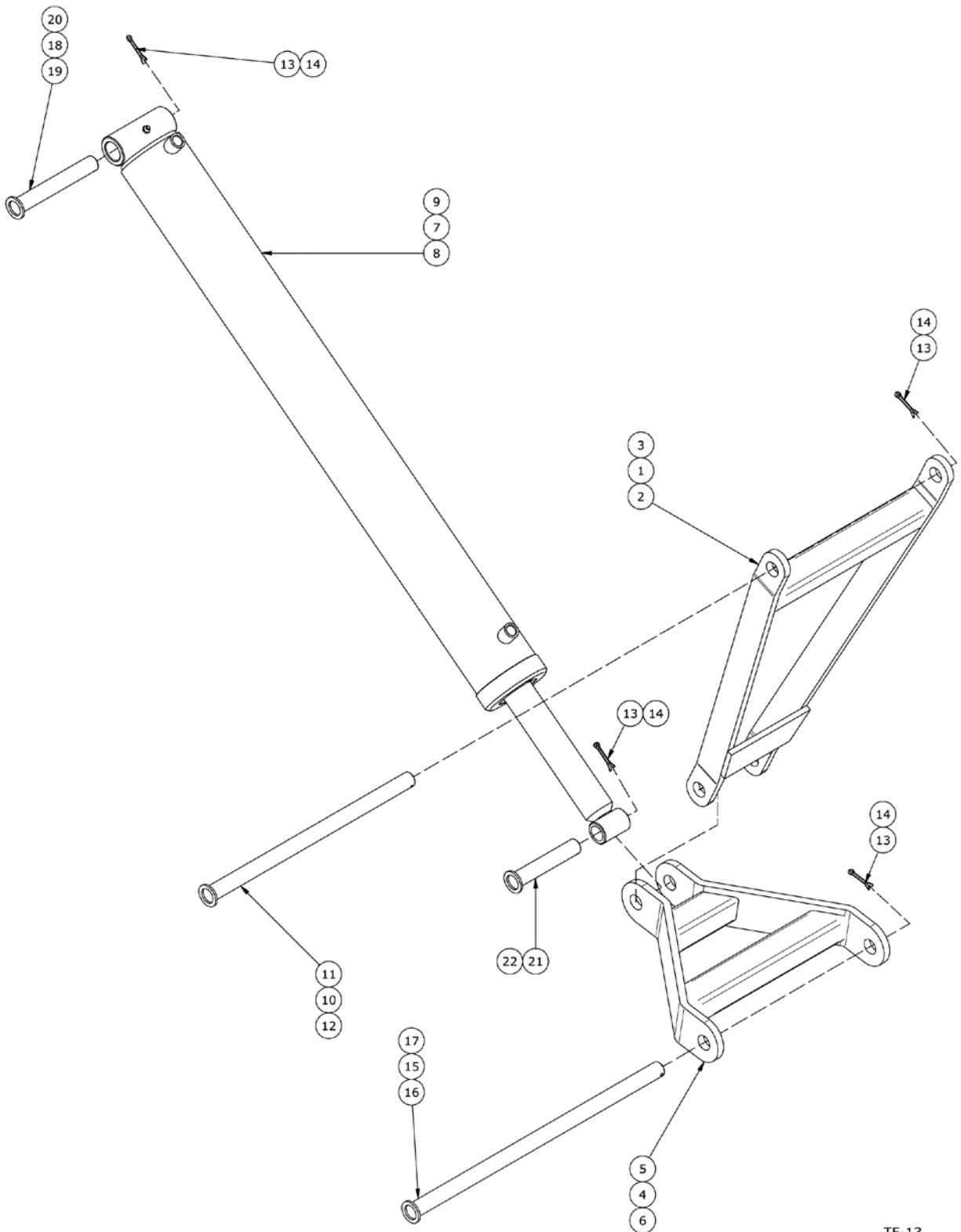
Item	Part Number	Description
1	960531	Idler Frame
2	960183	Idler Assembly (Arm, Sprocket, Bearings, Shaft, Etc.)
3	906579	Idler Assembly (with Reverse Shaft)
4	963009	Bearing Flange (52 MST)
5	961627	1" Bearing with Collar
6	960533	Idler Shaft
7	960182	Reverse Kit Idler Shaft Ø1-3/8" x 8-3/4"
8	960177	1/4" Sq. x 1-1/4" Key
9	960532	60B15 Sprocket (1" Bore)
10	812026	5/16" x 1" Hex Bolt
11	81569	5/16" Lock Washer
12	81568	5/16" Hex Nut
13	967183	5/16" x 1" Flat Head Socket Bolt
14	988999	3/8" x 3/8" Socket Set Screw
15	81638	1/2" Flat Washer
16	81637	1/2" Lock Washer
17	81636	1/2" Hex Nut

Tire Assembly Drawing



Item	Part Number	Description
1	906437	Stub Axle Weldment
2	959202	Tire 7.60 x 15" x 4 Ply
3	959205	Tire 9.5L x 15" x 6 Ply (Hiway)
4	F0110	Wheel 15" x 5" x 5 Bolt
5	968404	1/2" Wheel Bolt
6	967900	1/4" Grease Fitting
7	968430	Inner Oil Seal (SE14X)
8	967208	Outer Bearing Cone (LM48548)
9	968412	Outer Bearing Cup (LM48510)
10	968405	Bearing Cup (LM11910)
11	968406	Outer Bearing Cone (LM11949)
12	9812416	3/4" SAE Washer (BR)
13	9812486	1/8" x 1-1/2" Cotter Pin
14	81834	3/4" Slotted Hex Nut (BR)
15	968409	Dust Cap (DC12)
16	968403	5 Bolt Hub w/ Bearing Cups
17	968431	5 Bolt Hub CTD H516 Complete Assembly
18	87553	1/2" x 1-3/4" Hex Bolt
19	81637	1/2" Lock Washer
20	81636	1/2" Hex Nut

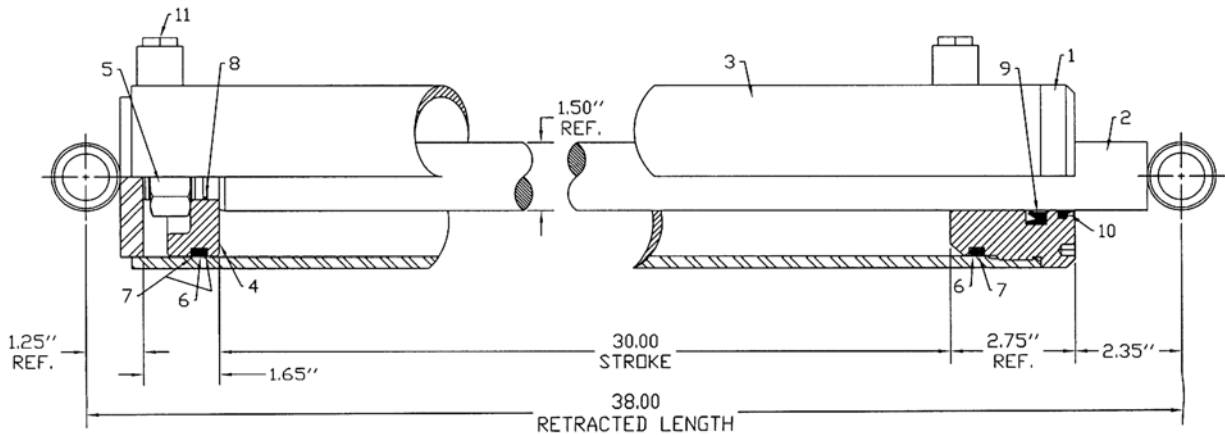
Cylinder Mount Components Drawing



TF-13

Item	Part Number	Description
1	960093	Pivot Yoke, 50'
2	960094	Pivot Yoke, 60'
3	960095	Pivot Yoke, 70'
4	960096	Connecting Link, 50'
5	960097	Connecting Link, 60'
6	960098	Connecting Link, 70'
7	F9183	3-1/2" x 30" Hydraulic Cylinder, 50'
8	F9184	4" x 36" Hydraulic Cylinder, 60'
9	F9185	4" x 40" Hydraulic Cylinder, 70'
10	960099	1" x 16-1/8" Yoke Pin, 50'
11	960100	1" x 17-7/8" Yoke Pin, 60'
12	960101	1-1/4" x 22-1/8" Yoke Pin, 70'
13	9812433	3/16" x 1-1/2" Cotter Pin, 50' & 60'
14	81210	1/4" x 2" Cotter Pin, 70'
15	960102	1" x 20" Connecting Link Pin, 50'
16	960103	1" x 22" Connecting Link Pin, 60'
17	960104	1-1/4" x 26" Connecting Link Pin, 70'
18	960111	1" x 6-1/2" Cylinder Base Pin, 50'
19	960112	1" x 6-7/8" Cylinder Base Pin, 60'
20	960113	1-1/4" x 7-3/4" Cylinder Base Pin, 70'
21	960109	1" x 5-1/2" Cylinder Swivel Pin, 50' & 60'
22	960110	1-1/4" x 5-1/2" Cylinder Swivel Pin, 70'

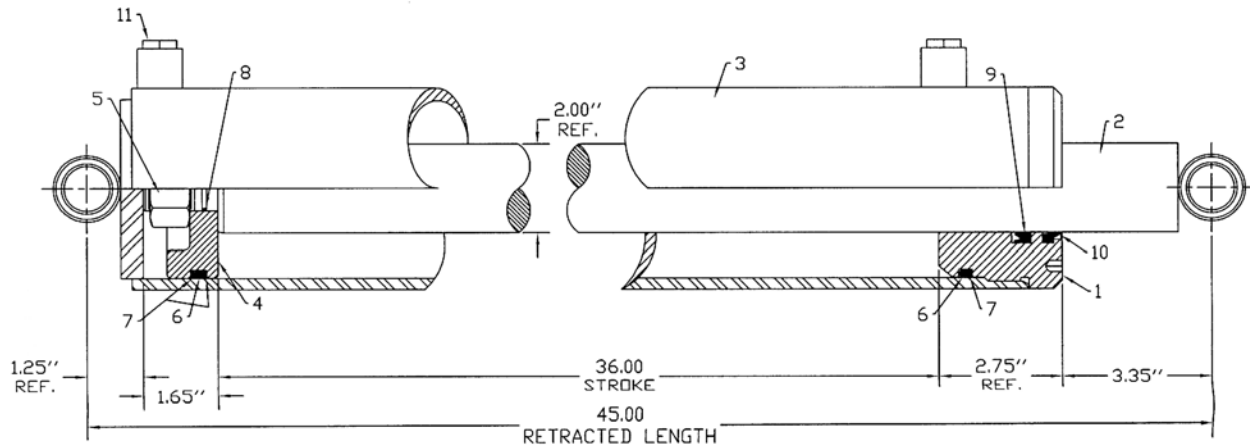
3.50 Dia. x 30.00 Cylinder Drawing



TF-19

Item	Part Number	Description
	F9183	Cylinder Complete
1	24676	3.50 Dia. Head plate
2	108143	1.50 Dia. x 36.75 Lg Shaft Weldment
3	24883	3.50 Dia. Tube Weldment
4	105398	3.50 Dia. Piston
5	813407	Locknut 1.0 Unf
6	82338	O Ring 3.125 ID x 3.50 OD x 0.19
7	83338	Backup 3.125 ID x 3.50 OD x 0.06
8	82020	O Ring 0.875 ID x 1.00 ID x 0.06
9	810811	U-Cup 1.50 ID x 2.125 OD x 0.313
10	812976	Wiper Seal 1.50 ID x 1.875 OD (Snap-In)
11	812081	Plug 3/4" MORB Steel
12	22370	Hydraulic Cylinder Decal
13	105420	Reference Plate JBI/FK Serial #

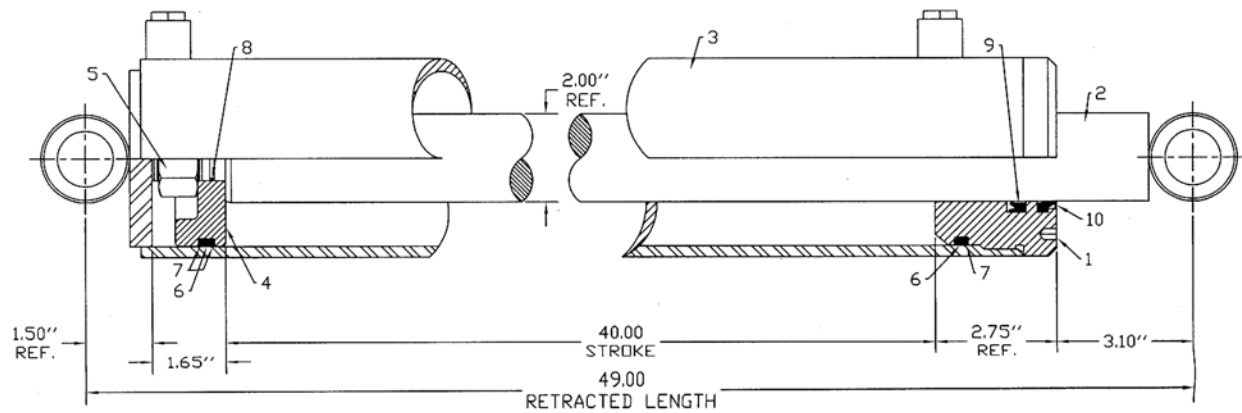
4.00 Dia. x 36.00 Cylinder Drawing



TF-20

Item	Part Number	Description
	F9184	Cylinder Complete
1	24865	4.0 Dia. Head plate
2	105422	Shaft Weld't 2.00 OD x 43.75 Lg
3	24884	4.0 Dia. Tube Weldment
4	105152	4.0 Dia. Piston
5	813407	Locknut 1.0 UNF
6	82342	O-Ring 3.625 ID x 4.0 x 0.19
7	83342	Backup 3.625 ID x 4.0 OD x 0.06
8	82020	O-Ring -.875 ID x 1.00 x 0.06
9	812967	U-Cup 2.00 ID x 2.50 OD x 0.375
10	812978	Wiper Seal 2.00 ID x 2.50 OD (Snap-In)
11	812081	Plug 3/4" MORB Steel
12	22370	Hydraulic Cylinder Decal
13	105420	Reference Plate JBI/FK Serial #

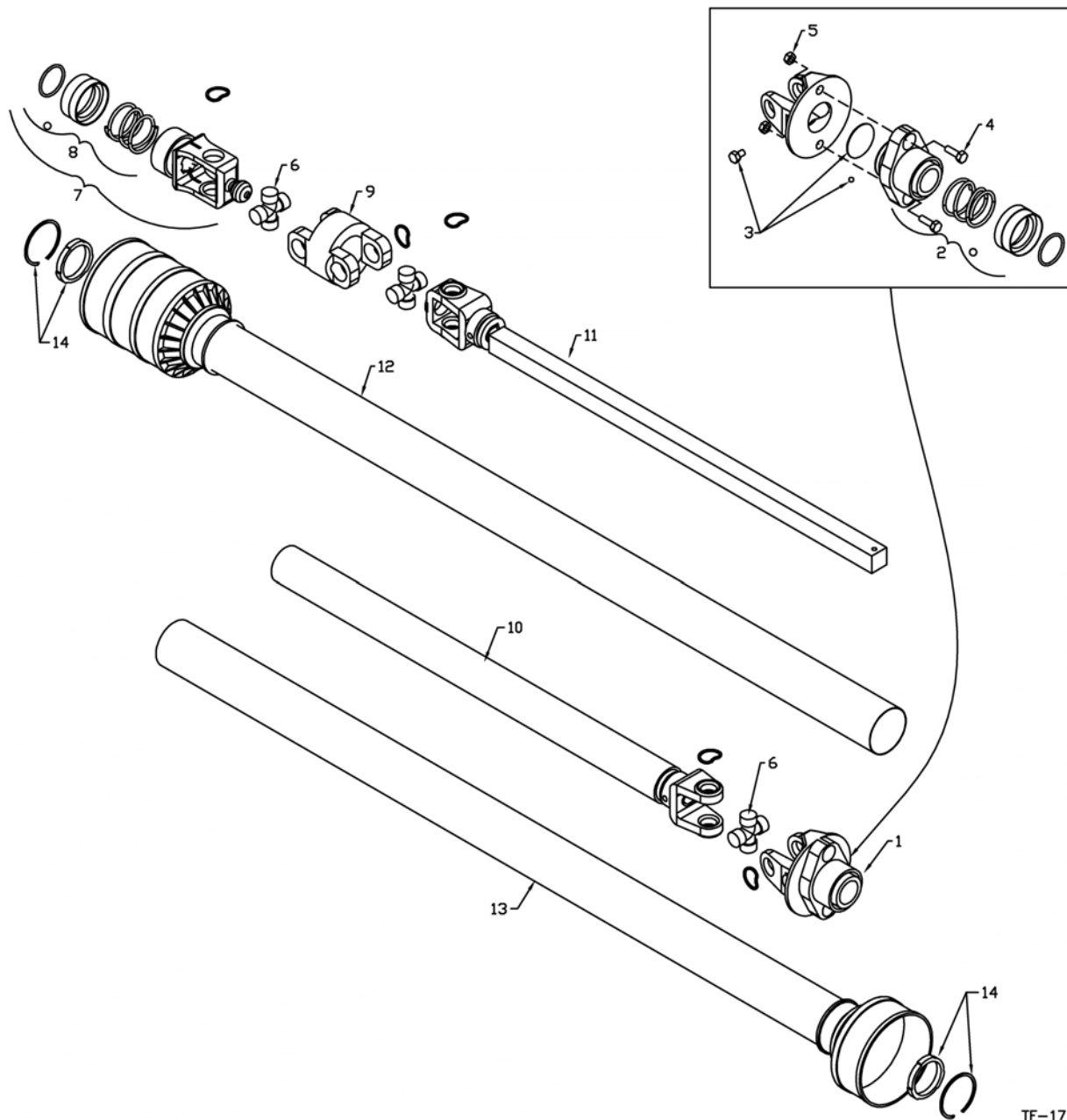
4.00 Dia. x 40.00 Cylinder Drawing



TF-21

Item	Part Number	Description
	F9185	Cylinder Complete
1	24865	4.0 Dia. Head plate
2	105426	Shaft Weld't 2.0 OD x 47.50 Lg
3	24885	4.0 Dia. Tube Weldment
4	105152	4.0 Dia. Piston
5	813407	Locknut 1.0 UNF
6	82342	O-Ring 3.625 ID x 4.0 OD x 0.19
7	83342	Backup 3.625 ID x 4.0 OD x 0.06
8	82020	O-Ring 0.875 ID x 1.00 x 0.06
9	812967	U-Cup 2.00 ID x 2.50 OD x 0.375
10	812978	Wiper Seal 2.00 ID x 2.50 OD (Snap In)
11	812081	Plug 3/4" MORB Steel
12	22370	Hydraulic Cylinder Decal
13	105420	Reference Plate JBI/FK Serial #

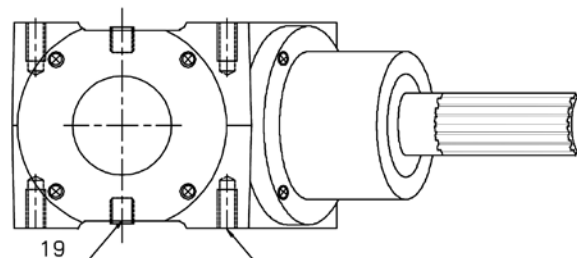
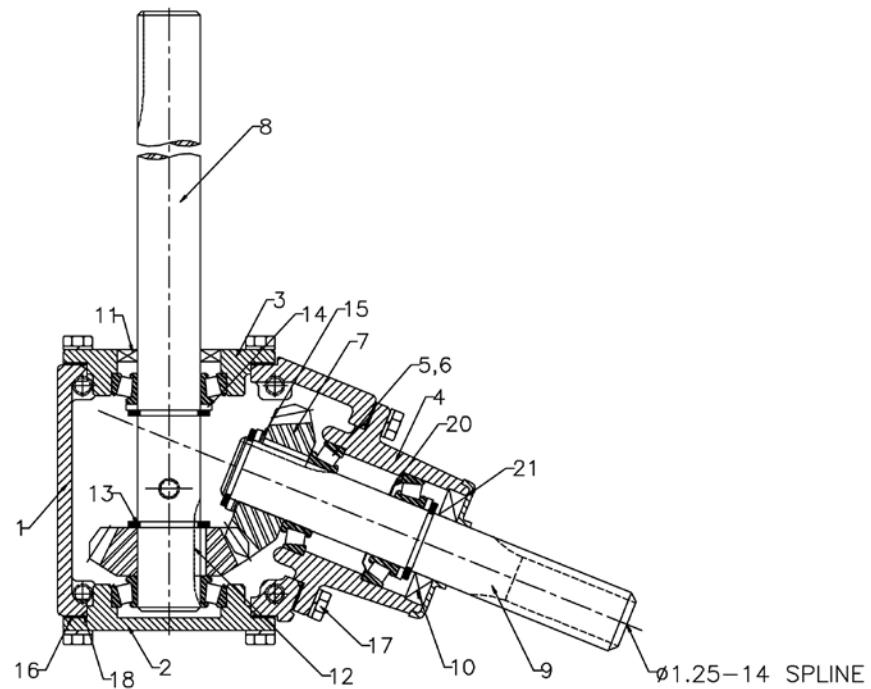
PTO Shaft Drawing



TF-17

Item	Part Number	Description
	F9043	Shaft Complete
	908718	Outer Half Shaft - Implement
	936166	Inner Half Shaft - Tractor
1	936167	Ball Shear Assembly
2	936168	Safety Slide Lock Repair Kit
		(collar, spring, ret. Ring, 2-pawls)
3	936248	Shear Assembly Repair Kit
		(3/8" x 1/2" bolt, lube, blank, 31-1/4" balls)
4	903296	Bag of 10 - Shear Bolts - 5/16" x 1" (gr. 5) with Nuts
5	812362	5/16" Lock Nut
6	906503	Repair Kit - Extended Life (standard)
	936093	Repair Kit - Optional
7	936218	Outer Spline Yoke
8	936226	Safety Slide Lock Repair Kit
9	936181	CV Center Housing
10	936173	Yoke & Tube
11	936180	Yoke & Shaft
12	936178	Outer Shield
13	936176	Inner Guard
14	936319	Nylon Repair Kit 20 x 26 (bearing & snap ring)

Mechanical Drive - Input Box Gearbox Drawing



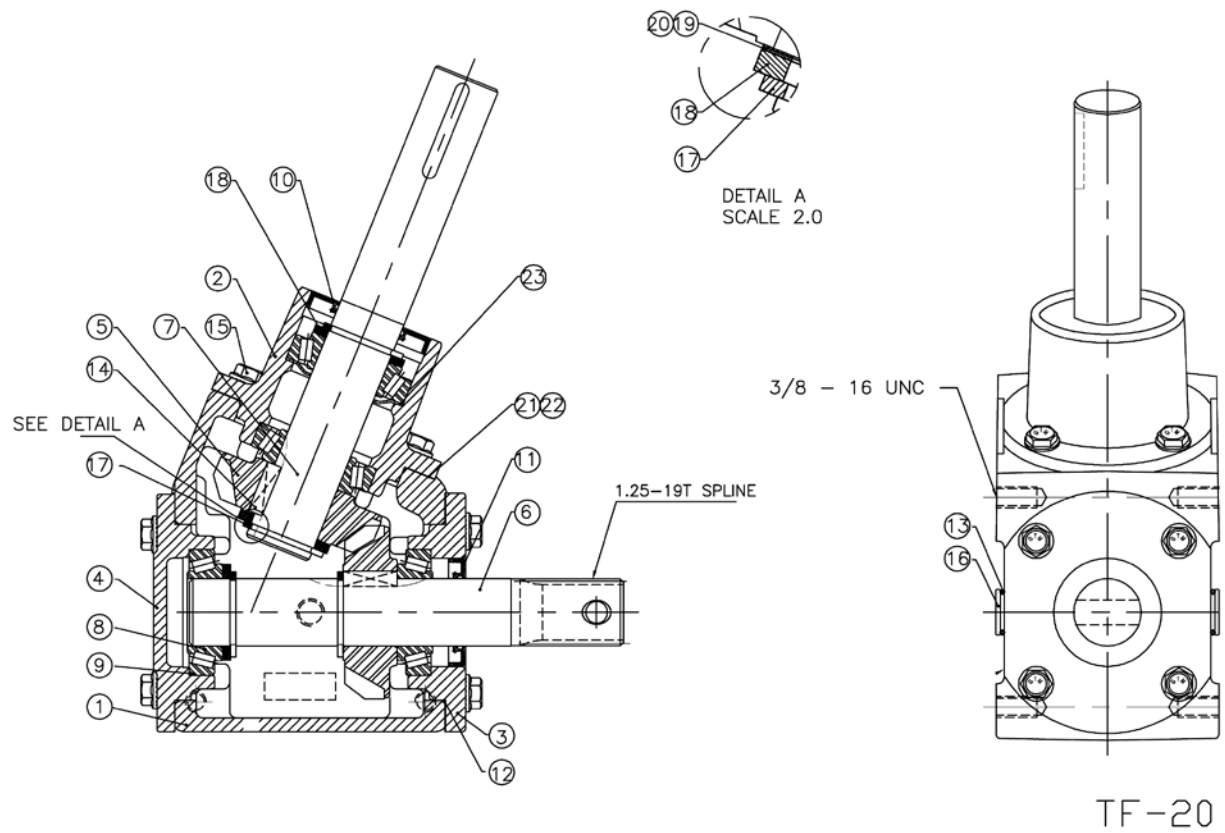
3/4"-16UNF PIPE PLUG, WITH O-RING

3/8-16 UNC

TF-21

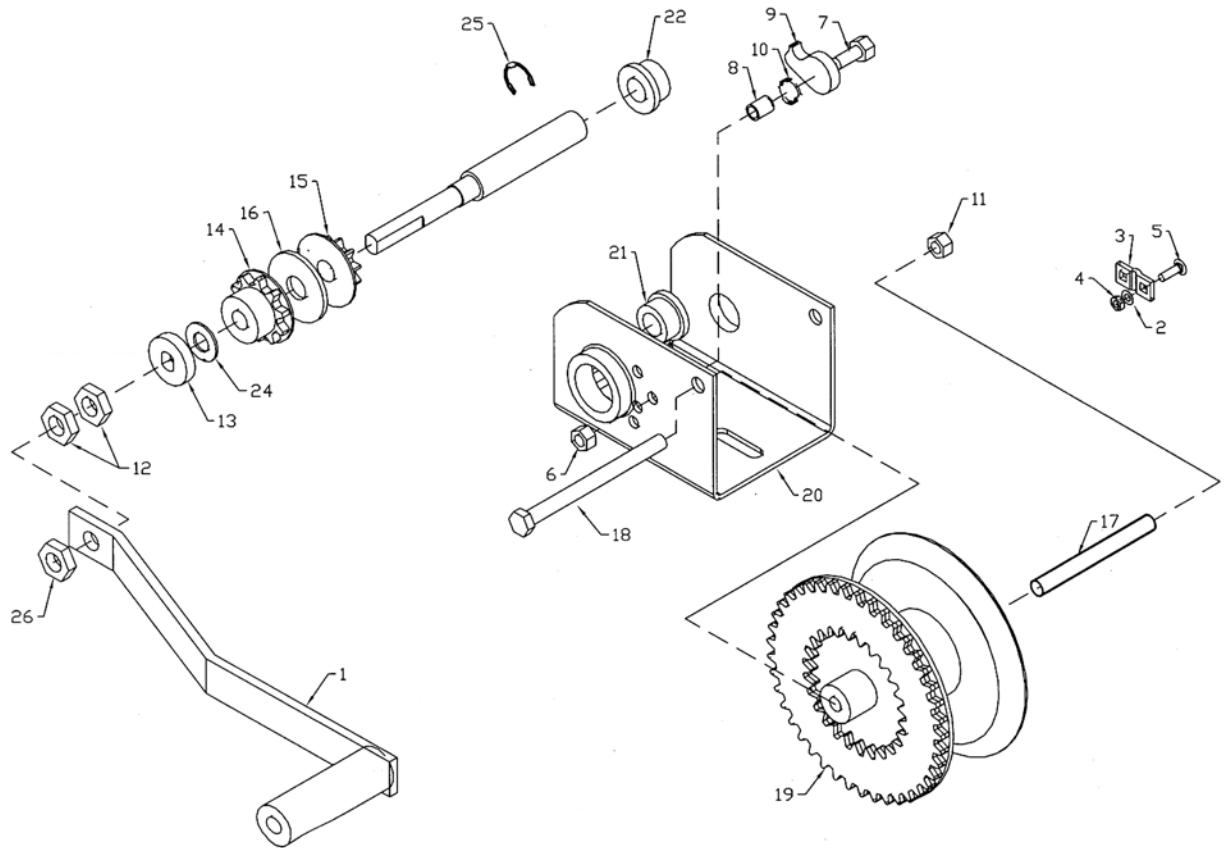
Item	Part Number	Description
	960953	Gearbox Complete
1	960496	Housing
2	960802	End Cap
3	960498	End Cap
4	960497	Quill
5	967712	Bearing Cone LM67048
6	967711	Bearing Cup LM67010
7	960505	Gear DP 6Teeth 19
8	960512	Shaft, Cross
9	960955	Shaft, Quill
10	960509	Seal, 1.25 x 2.374 x 0.315
11	960510	Seal, 1.25 x 2.00 x 0.315
12	960513	Square Key 1/4" x 0.9"
13	966769	Snap Ring
14	9812442	Spacer
15	960504	Spacer
16	93009	Gasket
17	9812351	Capscrew 5/16" - 18 UNC x 3/4"
18	908895	3/4" - 16 UNF Pipe Plug with O Ring
19	906444	O Ring 71 mm x 1.8
20	960514	Grease Washer
21	960747	Shield

Mechanical Drive - Intake Auger Gearbox Drawing



Item	Part Number	Description
	960952	Gearbox Complete
1	960496	Housing
2	960497	Quill
3	960802	End Cap
4	960498	End Cap
5	960505	Gear DP 6Teeth 19
6	960944	Shaft, Cross
7	960954	Shaft, Quill
8	967712	Bearing Cone LM67048
9	967711	Bearing Cup LM67010
10	960509	Seal, 1.25 x 2.374 x 0.315
11	960510	Seal, 1.25 x 2.00 x 0.393
12	906444	O Ring 71 mm x 1.8
13	911974	O Ring 18 mm x 2 mm
14	960513	Square Key 1/4" x 0.9"
15	812533	Capscrew 5/16" - 18 UNC x 3/4"
16	908895	3/4" - 16 UNF Pipe Plug with O Ring
17	966769	Snap Ring
18	9812442	Spacer Ø32 x 42 x 3.5
19	960504	Spacer Ø32 x 42 x 0.1
20	960505	Spacer Ø32 x 42 x 0.3
21	93009	Gasket 0.1
22	911252	Gasket 0.3
23	960514	Grease Washer

1051 Winch Drawing



TF-22

Item	Part Number	Description
1	2461S01	Handle Assembly

	5621S01	Cable Keeper Kit
2		Lockwasher #10
3		Cable Clamp
4		Nut - #10-24, Hex
5		Carriage Bolt #10-24 x .69Lg
5		Carriage Bolt #10-24 x .69Lg

	6731S00	Ratchet Kit
6		Lock Nut - 5/16-18
7		Hex Bolt - 5/16-18 x 1.00 Lg Gr.5
8		Ratchet Spacer
9		Ratchet Pawl
10		Ratchet Spring

11*		Lock Nut - 3/8-16
12*		Lock Nut - 1/2-13
13*		Disc - Brake
14*		Ratchet Assembly
15*		Pinion Gear Assembly
16*		Friction Disc
17*		Spacer - Drum, 3.81 Lg
18*		Hex Bolt - 3/8-16 x 4.50 Lg Gr.2
19*		Drum Weldment
20*		Frame - K1051
21*		Bushing - 1.25 ID x .50 Lg
22*		Bushing - .758 ID x .50 Lg
23*		Pinion Shaft
24*		Nylon Washer
25*		Retaining Ring - 3/4
26*		Lock Nut - 1/2-13, Nylon

*Not available

Shipping Kit and Bundle Numbers

The following is a list of Kit Numbers for this product and the Bundle Numbers, Descriptions, and Quantities for each Kit.

Quantity	Bundle Number	Description
Y1050TM 10" x 50' Backsaver Auger		
1	F9070	Top Section, 10" x 50'
1	F1075	Bottom Section, 10" x 50'
1	F0171	Axle, 10" x 50'
1	F9253	Right Arm, 10" x 50'
1	F9252	Left Arm, 10" x 50'
1	F9021	Upper Lift Arm, 10" x 50'
1	F9024	Lower Lift Arm, 10" x 50'
1	F1067	Intake Auger
1	F1068	Intake Hopper
1	F9043	PTO Shaft
1	F1083	Crate of Parts
1	F1069	Input Box
2	F0110	15" x 5" x 5 Bolt Wheels Only
1	F0908	Carton of Parts

Y1050TMR 10" x 50' Backsaver Auger w/ Reverse Kit		
1	F9070	Top Section, 10" x 50'
1	F1075	Bottom Section, 10" x 50'
1	F0171	Axle, 10" x 50'
1	F9253	Right Arm, 10" x 50'
1	F9252	Left Arm, 10" x 50'
1	F9021	Upper Lift Arm, 10" x 50'
1	F9024	Lower Lift Arm, 10" x 50'
1	F1067	Intake Auger
1	F1068	Intake Hopper
1	F9043	PTO Shaft
1	F1083	Crate of Parts
1	F1070	Input Box
2	F0110	15" x 5" x 5 Bolt Wheels Only
1	F0908	Carton of Parts

Quantity	Bundle Number	Description
----------	---------------	-------------

Y1050TMM - 10" x 50' Backsaver Auger w/ Multi-Flighting Intake Hopper		
1	F9070	Top Section, 10" x 50'
1	F1075	Bottom Section, 10" x 50'
1	F0171	Axle, 10" x 50'
1	F9253	Right Arm, 10" x 50'
1	F9252	Left Arm, 10" x 50'
1	F9021	Upper Lift Arm, 10" x 50'
1	F9024	Lower Lift Arm, 10" x 50'
1	F1067	Intake Auger
1	F1006	Multi-Flighting Hopper
1	F9043	PTO Shaft
1	F1083	Crate of Parts
1	F1069	Input Box
2	F0110	15" x 5" x 5 Bolt Wheels Only
1	F0906	Carton of Parts

Y1050TMMR 10" x 50' Backsaver Auger w/ Multi-Flighting Intake Hopper and Reverse Kit		
1	F9070	Top Section, 10" x 50'
1	F1075	Bottom Section, 10" x 50'
1	F0171	Axle, 10" x 50'
1	F9253	Right Arm, 10" x 50'
1	F9252	Left Arm, 10" x 50'
1	F9021	Upper Lift Arm, 10" x 50'
1	F9024	Lower Lift Arm, 10" x 50'
1	F1067	Intake Auger
1	F1006	Multi-Flighting Hopper
1	F9043	PTO Shaft
1	F1083	Crate of Parts
1	F1070	Input Box
2	F0110	15" x 5" x 5 Bolt Wheels Only
1	F0906	Carton of Parts

Quantity	Bundle Number	Description
----------	---------------	-------------

Y1060TM 10" x 60' Backsaver Auger		
1	F9071	Top Section, 10" x 60'
1	F9073	Center Section, 10" x 60'
1	F1077	Bottom Section, 10" x 60'
1	F0172	Axle, 10" x 60'
1	F9251	Right Arm, 10" x 60'
1	F9250	Left Arm, 10" x 60'
1	F9022	Upper Lift Arm, 10" x 60'
1	F9025	Lower Lift Arm, 10" x 60'
1	F1067	Intake Auger
1	F1068	Intake Hopper
1	F9043	PTO Shaft
1	F1084	Crate of Parts
1	F1069	Input Box
2	F0110	15" x 5" x 5" Bolt Wheels Only
1	F0908	Carton of Parts

Y1060TMR 10" x 60' Backsaver Auger w/ Reverse Kit		
1	F9071	Top Section, 10" x 60'
1	F9073	Center Section, 10" x 60'
1	F1077	Bottom Section, 10" x 60'
1	F0172	Axle, 10" x 60'
1	F9251	Right Arm, 10" x 60'
1	F9250	Left Arm, 10" x 60'
1	F9022	Upper Lift Arm, 10" x 60'
1	F9025	Lower Lift Arm, 10" x 60'
1	F1067	Intake Auger
1	F1068	Intake Hopper
1	F9043	PTO Shaft
1	F1084	Crate of Parts
1	F1070	Input Box
2	F0110	15" x 5" x 5" Bolt Wheels Only
1	F0908	Carton of Parts

Quantity	Bundle Number	Description
----------	---------------	-------------

Y1060TMM 10" x 60' Backsaver Auger w/ Multi-Flighting Intake Hopper		
1	F9071	Top Section, 10" x 60'
1	F9073	Center Section, 10" x 60'
1		Bottom Section, 10" x 60'
1	F0172	Axle, 10" x 60'
1	F9251	Right Arm, 10" x 60'
1	F9250	Left Arm, 10" x 60'
1	F9022	Upper Lift Arm, 10" x 60'
1	F9025	Lower Lift Arm, 10" x 60'
1		Intake Auger
1		Multi-Flighting Hopper
1		PTO Shaft
1		Crate of Parts
1		Input Box
2	F0110	15" x 5" x 5" Bolt Wheels Only
1	F0906	Carton of Parts

Y1060TMMR 10" x 60' Backsaver Auger w/ Multi-Flighting Intake Hopper and Reverse Kit		
1	F9071	Top Section, 10" x 60'
1	F9073	Center Section, 10" x 60'
1	F1077	Bottom Section, 10" x 60'
1	F0172	Axle, 10" x 60'
1	F9251	Right Arm, 10" x 60'
1	F9250	Left Arm, 10" x 60'
1	F9022	Upper Lift Arm, 10" x 60'
1	F9025	Lower Lift Arm, 10" x 60'
1	F1067	Intake Auger
1	F1006	Multi-Flighting Hopper
1	F9043	PTO Shaft
1	F1084	Crate of Parts
1	F1070	Input Box
2	F0110	15" x 5" x 5" Bolt Wheels Only
1	F0906	Carton of Parts

Quantity	Bundle Number	Description
----------	---------------	-------------

Y1070TM 10" x 70' Backsaver Auger		
1	F9072	Top Section, 10" x 70'
1	F9074	Center Section, 10" x 70'
1	F1076	Bottom Section, 10" x 70'
1	F0173	Axle, 10" x 70'
1	F9249	Right Arm, 10" x 70'
1	F9248	Left Arm, 10" x 70'
1	F9023	Upper Lift Arm, 10" x 70'
1	F9026	Lower Lift Arm, 10" x 70'
1	F1067	Intake Auger
1	F1068	Intake Hopper
1	F9043	PTO Shaft
1	F1085	Crate of Parts
1	F1069	Input Box
2	F0110	15" x 5" x 5" Bolt Wheels Only
1	F0908	Carton of Parts

Y1070TMR 10" x 70' Backsaver Auger w/ Reverse Kit		
1	F9072	Top Section, 10" x 70'
1	F9074	Center Section, 10" x 70'
1	F1076	Bottom Section, 10" x 70'
1	F0173	Axle, 10" x 70'
1	F9249	Right Arm, 10" x 70'
1	F9248	Left Arm, 10" x 70'
1	F9023	Upper Lift Arm, 10" x 70'
1	F9026	Lower Lift Arm, 10" x 70'
1	F1067	Intake Auger
1	F1068	Intake Hopper
1	F9043	PTO Shaft
1	F1085	Crate of Parts
1	F1070	Input Box
2	F0110	15" x 5" x 5" Bolt Wheels Only
1	F0908	Carton of Parts

Quantity	Bundle Number	Description
----------	---------------	-------------

Y1070TMM 10" x 70' Backsaver Auger w/ Multi-flighting Hopper		
1	F9072	Top Section, 10" x 70'
1	F9074	Center Section, 10" x 70'
1	F1076	Bottom Section, 10" x 70'
1	F0173	Axle, 10" x 70'
1	F9249	Right Arm, 10" x 70'
1	F9248	Left Arm, 10" x 70'
1	F9023	Upper Lift Arm, 10" x 70'
1	F9026	Lower Lift Arm, 10" x 70'
1	F1067	Intake Auger
1	F1006	Multi-flighting Hopper
1	F9043	PTO Shaft
1	F1085	Crate of Parts
1	F1069	Input Box
2	F0110	15" x 5" x 5" Bolt Wheels Only
1	F0906	Carton of Parts

Y1070TMMR 10" x 70' Backsaver Auger w/ Multi-flighting Hopper and Reverse Kit		
1	F9072	Top Section, 10" x 70'
1	F9074	Center Section, 10" x 70'
1	F1076	Bottom Section, 10" x 70'
1	F0173	Axle, 10" x 70'
1	F9249	Right Arm, 10" x 70'
1	F9248	Left Arm, 10" x 70'
1	F9023	Upper Lift Arm, 10" x 70'
1	F9026	Lower Lift Arm, 10" x 70'
1	F1067	Intake Auger
1	F1006	Multi-flighting Hopper
1	F9043	PTO Shaft
1	F1085	Crate of Parts
1	F1070	Input Box
2	F0110	15" x 5" x 5" Bolt Wheels Only
1	F0906	Carton of Parts

Optional Bundle Numbers

The following is a list of options available for the Kits listed above.

Quantity	Bundle Number	Description
1	F214	10" Poly Spout (oval)
1	Y208	Set of 2 7.60 x 15 x 4 Ply Tires (non-highway rated)
1	Y209	Set of 2 9.5L x 15 x 6 Ply (Highway)
1	960182	Reverse Idler Shaft
1	F9552	Extreme-use PTO Shaft (high moisture corn, peas, beans) (2-6 Splined Ends)
1	Y1105	Multi-flighting Hopper Conversion
1	Y1104	Hopper Mover (Hydraulic)
1	909681	Closed Centre Hopper Mover Valve Kit
1	F0017	Safety Light Kit
1	F0420	Safety Chain Assembly
1	Y120	10" x 10' Extension Kit (for extending 10" x 70' only)
1	F0014	Reflective Safety Decal Kit
1	F0923	Clevis Hitch
1	F1088	Clevis Hitch 6" Extension
1	Y1106	Hydraulic Winch Kit
1	Y1107	Hydraulic Winch Kit & Auger Hopper Mover

Farm King Limited Warranty

This document limits your warranty rights.

Base Limited Warranty

Buhler Industries Inc. provides this warranty only to original retail purchasers of its product. Buhler Industries Inc. warrants to such purchasers that all Buhler Industries Inc. manufactured parts and components used and serviced as provided for in the Operator's Manual shall be free from defects in materials and workmanship for a period following delivery to the original retail purchaser of 12 months (80 days for commercial applications). This limited warranty applies only to those parts and components manufactured by Buhler Industries Inc. Parts and components manufactured by others are subject to their manufacturer's warranties, if any.

Buhler Industries Inc. will fulfill this limited warranty by, at its option, repairing or replacing any covered part that is defective or is the result of improper workmanship, provided that the part is returned to Buhler Industries Inc. within thirty (30) days of the date that such defect or improper workmanship is, or should have been, discovered. Buhler Industries Inc. reserves the right to either inspect the product at the buyer's location or have it returned to the factory for inspection. Parts must be returned through the selling representative and the buyer must prepay transportation charges.

Buhler Industries Inc. will not be responsible for repairs or replacements that are necessitated, in whole or part, by the use of parts not manufactured by or obtained from Buhler Industries Inc. Under no circumstances are component parts warranted against normal wear and tear. There is no warranty on product pump seals, product pump bearings, rubber product hoses, pressure gauges, or other components that require replacement as part of normal maintenance. Also: Buckets and Bucket Tines carry no warranty, Bent Spears carry no warranty, Snowblower Fan Shafts carry no warranty, Mower Blades carry no warranty, Portable Auger Parts Have Two (2) Year Warranty, Loader Parts Have Two (2) Year Warranty. The purchaser is solely responsible for determining suitability of goods sold. This warranty is expressly in lieu of all other warranties expressed or implied. Buhler Industries Inc. will in no event be liable for any incidental or consequential damages whatsoever. Nor for any sum in excess of the price received for the goods for which liability is claimed.

Repair Parts Limited Warranty

Buhler Industries Inc. warrants Farm King replacement parts purchased after the expiration of the Buhler Industries Inc. Limited Warranty, and used and serviced as provided for in the Operator's Manual, to be free from defects in materials or workmanship for a period of thirty (30) days from the invoice date for the parts. Buhler Industries Inc. will fulfill this limited warranty by, at its option, repairing or replacing any covered part that is defective or is the result of improper workmanship, provided that the part is returned to Buhler Industries Inc. within thirty (30) days of the date that such defect or improper workmanship is, or should have been, discovered. Such parts must be shipped to Buhler Industries Inc. at the purchaser's expense.

What is Not Covered

Under no circumstances does this limited warranty cover any components or parts that have been subject to the following: negligence; alteration or modification not approved by Buhler Industries Inc.; misuse; improper storage; lack of reasonable and proper maintenance, service, or repair; normal wear; damage from failure to follow operating instructions; accident; and/or repairs that have been made with parts other than those manufactured, supplied, and or authorized by Buhler Industries Inc.

Authorized Dealer and Labor Costs

Repairs eligible for labor under this limited warranty must be made by Buhler Industries Inc. or an authorized Farm King dealer. Buhler Industries Inc. retains the exclusive discretion to determine whether it will pay labor costs for warranty repairs or replacements, and the amount of such costs that it will pay and the time in which the repairs will be made. If Buhler Industries Inc. determines that it will pay labor costs for warranty work, it will do so by issuing a credit to the dealer's or distributor's account. Buhler Industries Inc. will not approve or pay invoices sent for repairs that Buhler Industries Inc. has not previously approved. Warranty service does not extend the original term of this limited warranty.

Warranty Requirements

To be covered by warranty, each Farm King new product must be registered with Buhler Industries Inc. within thirty (30) days of delivery to original retail purchaser. If the customer decides to purchase replacement components before the warranty disposition of such components is determined, Buhler Industries Inc. will bill the customer for such components and then credit the replacement invoice for those components later determined to be covered by this limited warranty. Any such replacement components that are determined not be covered by this limited warranty will be subject to the terms of the invoice and shall be paid for by the purchaser.

Warranty Claims:

Warranty requests must be prepared on Buhler Industries Inc. Warranty Claim Forms with all requested information properly completed. Warranty Claims must be submitted within a thirty (30) day period from date of failure repair.

Warranty Labor:

Any labor subject to warranty must be authorized by Buhler Industries Inc. The labor rate for replacing defective parts, where applicable, will be credited at 100% of the dealer's posted shop rate. Defective parts will receive an extra 10% discount to assist with freight or other incidental costs.

Exclusive Effect of Warranty and Limitation of Liability

TO THE EXTENT PERMITTED BY LAW, BUHLER INDUSTRIES INC. DISCLAIMS ANY WARRANTIES, REPRESENTATIONS, OR PROMISES, EXPRESS OR IMPLIED, AS TO THE QUALITY, PERFORMANCE, OR FREEDOM FROM DEFECT OF THE COMPONENTS AND PARTS COVERED BY THIS WARRANTY AND NOT SPECIFICALLY PROVIDED FOR HEREIN.

TO THE EXTENT PERMITTED BY LAW, BUHLER INDUSTRIES INC. DISCLAIMS ANY IMPLIED WARRANTIES OF MERCHANTABILITY AND FITNESS FOR A PARTICULAR PURPOSE ON ITS PRODUCTS COVERED HEREIN, AND DISCLAIMS ANY RELIANCE BY THE PURCHASER ON BUHLER INDUSTRIES INC.'S SKILL OR JUDGMENT TO SELECT OR FURNISH GOODS FOR ANY PARTICULAR PURPOSE. THE PURCHASER'S ONLY AND EXCLUSIVE REMEDIES IN CONNECTION WITH THE BREACH OR PERFORMANCE OF ANY WARRANTY ON PRODUCTS MANUFACTURED BY BUHLER INDUSTRIES INC. ARE THOSE SET FORTH HEREIN. IN NO EVENT SHALL BUHLER INDUSTRIES INC. BE LIABLE FOR INCIDENTAL OR CONSEQUENTIAL DAMAGES (INCLUDING, BY WAY OF EXAMPLE ONLY AND NOT LIMITATION, LOSS OF CROPS, LOSS OF PROFITS OR REVENUE, OTHER COMMERCIAL LOSSES, INCONVENIENCE, OR COST OF REPLACEMENT OF RENTAL EQUIPMENT). IN NO EVENT SHALL FARM KING'S CONTRACT OR WARRANTY LIABILITY EXCEED THE PURCHASE PRICE OF THE PRODUCT.

(Note that some provinces or states do not allow limitations on how long an implied warranty lasts or the exclusion or limitation of incidental or consequential damages, so the above limitations and exclusion may not apply to you.) This warranty gives you specific legal rights and you may also have other rights, which vary from province to province or state to state.

Buhler Industries Inc. neither assumes nor authorizes any person or entity, including its selling representatives, to assume any other obligations or liability in connections with the sale of covered equipment, or to make any other warranties, representations, or promises, express or implied, as to the quality, performance, or freedom from defect of the components and parts covered herein. No one is authorized to alter, modify, or enlarge this limited warranty, or its exclusions, limitations and reservations.

Corrections of defects and improper workmanship in the manner, and for the applicable time periods, provided for herein shall constitute fulfillment of all responsibilities of Buhler Industries Inc. to the purchaser, and Buhler Industries Inc. shall not be liable in negligence, contract, or on any other basis with respect to the subject equipment.

This limited warranty is subject to any existing conditions of supply which may directly affect Buhler Industries Inc.'s ability to obtain materials or manufacture replacement parts.

Buhler Industries Inc. reserves the right to make improvements in design or changes in specifications to its products at anytime, without incurring any obligation to owners of units previously sold.

Government Legislation:

Warranty terms and conditions are subject to provincial or state legislation.

Important Note: This warranty does not apply to rentals.

www.farm-king.com

Farm King

301 Mountain Street South
Morden, Manitoba Canada R6M 1X7
Ph.: 204.822.4467 | Fax: 204.822.6348
Toll Free: 888.524.1004
E-mail: info@buhler.com
www.farm-king.com

Equipment shown is subject to change without notice.
©2011 Buhler Trading Inc. Printed in Canada TSX:BUI

bühler | a division of Buhler Industries Inc.