



WHEATHEART

BH & GH Conventional Auger

Parts List



431 Gosport Street Moree
Phone 02 67521511 Fax 02 67524685
email - andrew@grainland.com.au
www.grainland.com.au

BH & GH AUGERS

BH AUGER

TUBE ASSEMBLY	E2
FRAME ASSEMBLY	E4
GAS/ELECTRIC DRIVE COMPONENTS	E6
PTO DRIVE COMPONENTS	E8
GEARBOX	E10
REVERSIBLE GEARBOX LINKAGE	E11

ELECTRIC CLUTCH

ENGINE MOUNT	E12
GEARBOX	E12
GAS TANK ASSEMBLY	E13

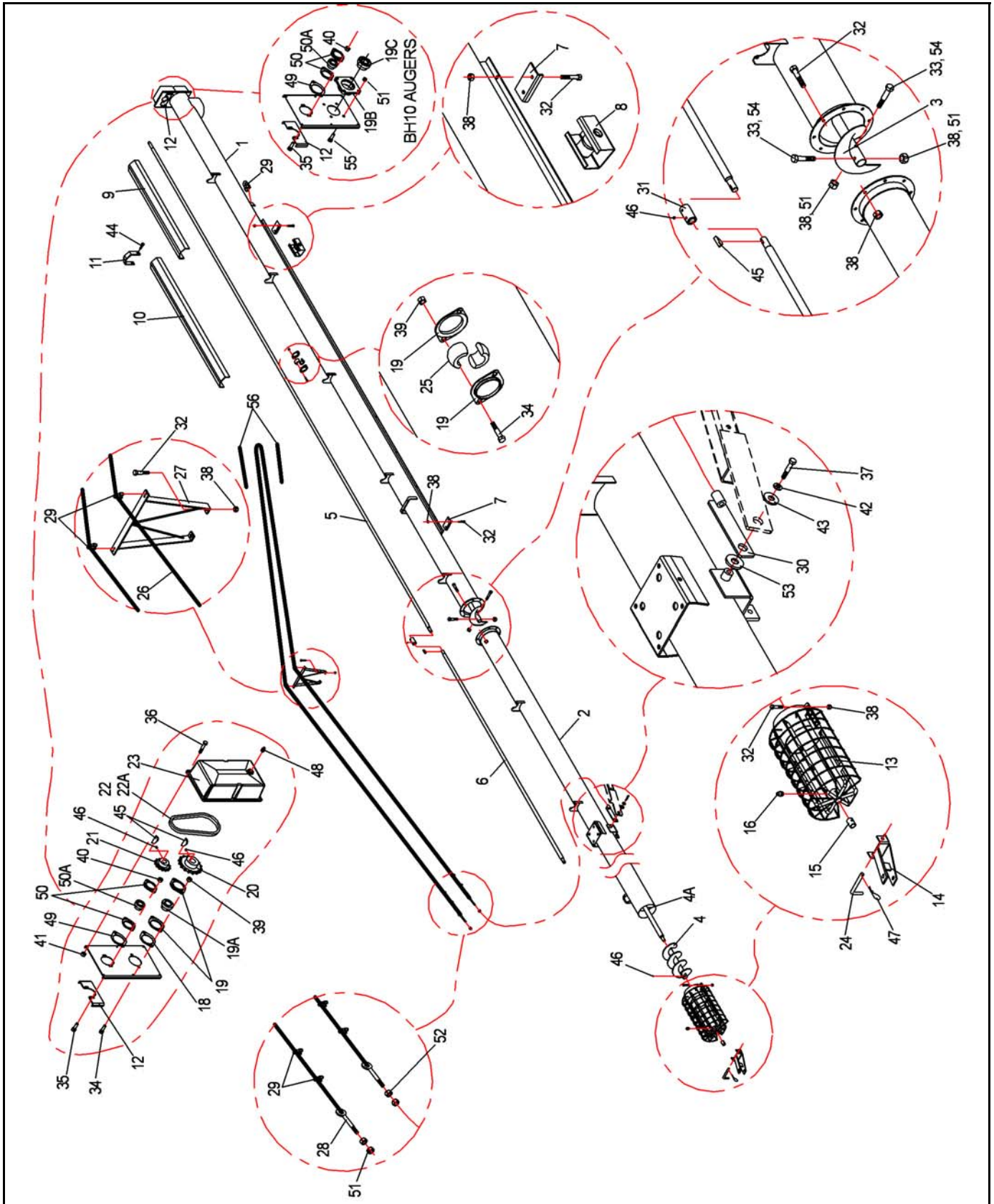
GH AUGER

TUBE ASSEMBLY	E14
FRAME ASSEMBLY	E18
ELECTRIC MOTOR DRIVE	E20
PTO ASSEMBLY	E21



BH Auger

TUBE ASSEMBLY

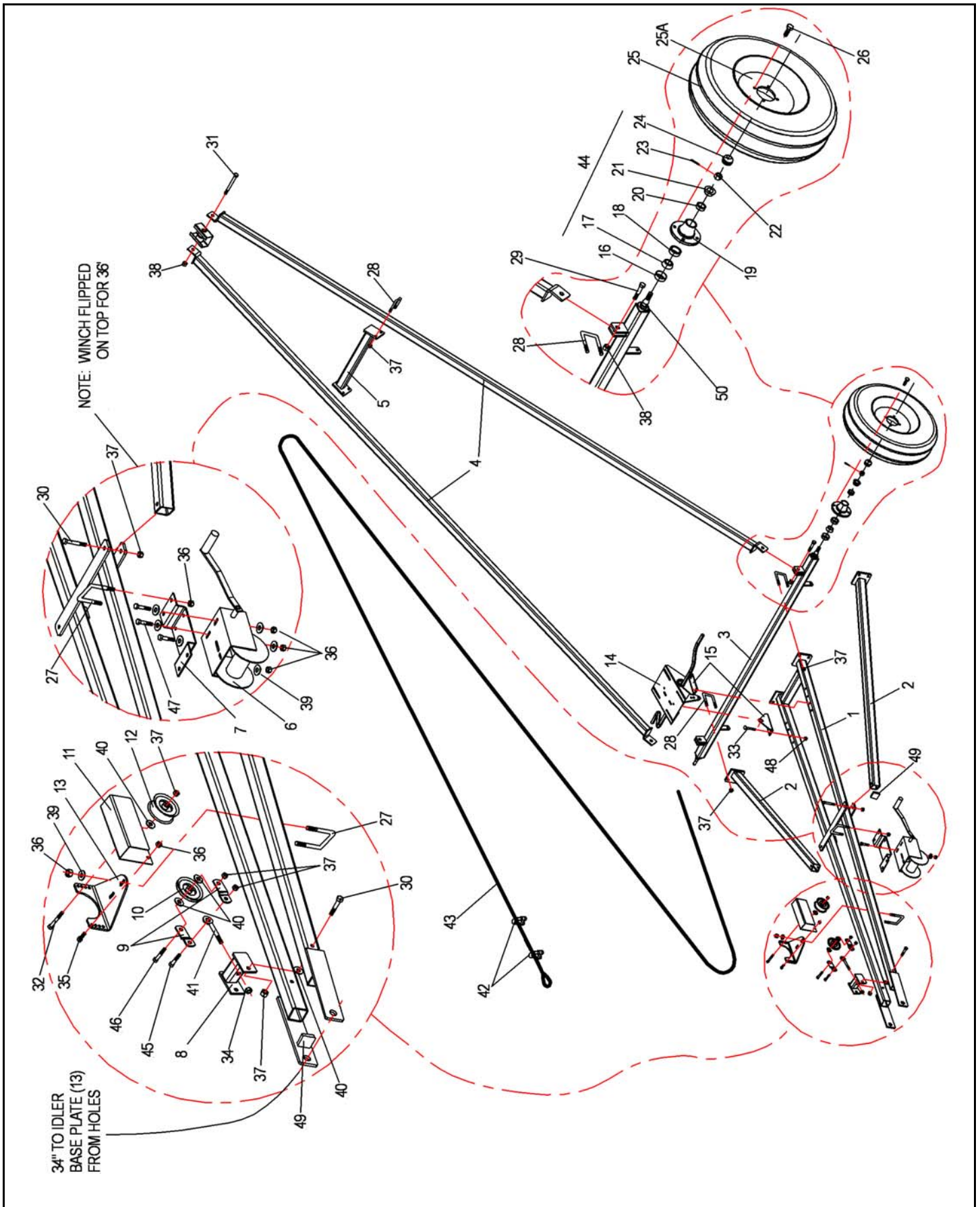


TUBE ASSEMBLY

ITEM	PART NO.	DESCRIPTION	8336	8X41	8X46	8X51	10X36	10X41	CROSS REF.
16	19222	PRESS-IN GREASE FITTING, 1/4"	1	1	1	1	1	1	2300028
18	17168	GASKET FOR 1 1/4" FLANGETTE BEARING	1	1	1	1	-	-	4503214
19	18695	1 1/4" BEARING FLANGE, SINGLE	12	12	14	16	10	10	4500062
19A	18853	1 1/4" BEARING INSERT, LESS FLANGES	1	1	1	1	-	-	4503131
19B	19567	1 1/4" FLANGE BEARING, 4 BOLT	-	-	-	-	1	1	4500067
19C	18852	1 1/4" BEARING, LESS FLANGE	-	-	-	-	1	1	9900856
20	19431	LOWER SPROCKET, 26 TOOTH	1	1	1	1	-	-	4503125
20	18699	LOWER SPROCKET, 30 TOOTH	-	-	-	-	1	1	8090012
21	19430	UPPER SPROCKET, 14 TOOTH	1	1	1	1	1	1	4503124
22	19432	ROLLER CHAIN W/CONNECTOR	1	1	1	1	-	-	4503129
22A	19433	ROLLER CHAIN CONNECTOR ONLY	1	1	1	1	1	1	990071-2
22	18696	ROLLER CHAIN, BH10"	-	-	-	-	1	1	4506111
23	17160	OIL BATH COVER, 10"	-	-	-	-	1	1	4500085
23	17158	OIL BATH HOUSING COVER	1	1	1	1	-	-	4503126
24	17181	CLEVIS PIN	1	1	1	1	1	1	4503069
25	18693	1 1/4" SPLIT HARDWOOD BRG, 2 HALVES	5	5	6	7	5	5	4500063
26	12917	AIRCRAFT CABLE, 5/1" TRUSS (1/4" X 60)	-	-	-	-	1	-	4503058
27	19324WH	TRUSS SUPPORT BRACKET	-	-	-	-	1	-	4503070
28	19331	EYEBOLT W/NUIT	-	-	-	2	-	-	4503071
29	19147	1/4" CABLE CLAMP	-	-	-	7	-	-	4500081
30	4503099	TRUSS CABLE ANCHOR	-	-	-	2	-	-	-
31	19119	DRIVESHAFT COUPLER	1	1	1	1	1	1	4503149
32	19542	BOLT, 7/16" - 14 X 1"	18	18	18	20	18	18	4500068
33	19545	BOLT, 7/16" - 14 X 2-1/4" GR8	2	2	2	2	-	-	9900128
34	19540	BOLT, 3/8" - 16 X 3/4"	12	12	14	16	12	12	9900530
35	19538	BOLT, 5/16" - 18 X 3/4"	2	2	2	2	2	2	9900797
36	19988	BOLT, 1/4" - 20 X 1", GR5	6	6	6	6	6	6	9900603
37	19231	BOLT, 1/2" - 13 X 1"	2	2	2	2	2	2	9900558
38	19598	LOCKNUT, 7/16" - 14	20	20	20	22	18	18	9900643
39	19596	FLANGE NUT, 3/8" - 16	12	12	14	16	12	12	9900788
40	19595	FLANGE NUT, 5/16"	2	2	2	2	2	2	9900129
41	19594	FLANGE NUT, 1/4" - 20	6	6	6	6	6	6	9900130
42	19605	WASHER, 1/2" LOCK	2	2	2	2	2	2	9900537
43	17401	WASHER, 1/2" FLAT	2	2	2	2	2	2	9900565
44	19274	SELF-TAPPING SCREW, 1/4"x4x5/8"	12	12	14	14	12	12	9900132
45	19224	WOODRUFF KEY, 1/4" X 1"	4	4	4	4	4	4	4503192
46	19225	SETSCREW, 3/8" - 16 X 3/8"	5	5	5	5	5	5	9900131
47	17383	HAIR PIN	1	1	1	1	1	1	0309027-2
48	17179	3/8" NPT PLUG	1	1	1	1	1	1	9900885
49	17167	GASKET FOR 1" FLANGETTE BEARING	1	1	1	1	1	1	4503215
50	18694	1" BEARING FLANGE, SINGLE	2	2	2	2	2	2	4503128
50A	18817	1" BEARING INSERT, LESS FLANGES	1	1	1	1	1	1	4503130
51	19599	LOCK NUT, 1/2"	-	-	-	2	6	6	9900538
52	17756	NUT JAM, 1/2"	-	-	-	2	-	-	9900678
53	17020	WASHER 1" SAE PLT	-	-	-	2	-	-	0500705
54	19798	BOLT, 1/2"x13 X 2-3/4" GR8 PLD	-	-	-	-	2	2	9900169
55	19588	BOLT, 1/2" X 1-1/4" GR5 PLD	-	-	-	-	4	4	9900588
56	4503306	HOSE, CLEAR, 5/16" X 12"	-	-	-	-	2	2	-

ITEM	PART NO.	DESCRIPTION	8336	8X41	8X46	10X36	10X41	CROSS REF.
1	4503112	UPPER TUBE WELDMENT, BHH" - 25"	1	1	1	-	-	-
1	4506101	UPPER TUBE WELDMENT, BH10" - 25"	-	-	-	1	1	-
1	4503120	UPPER TUBE BUNDLE, BHH" - 25"	1	1	1	-	-	-
1	4506006	UPPER TUBE BUNDLE, BH10" - 25"	-	-	-	1	1	-
2	4503116	LOWER TUBE WELDMENT, 8" X 51" - 25"	-	-	-	1	-	-
2	4503115	LOWER TUBE WELDMENT, 8" X 46" - 20"	-	-	-	1	-	-
2	4503114	LOWER TUBE WELDMENT, 8" X 41" - 15"	-	-	-	1	-	-
2	4503113	LOWER TUBE WELDMENT, 8" X 36" - 10"	1	-	-	-	-	-
2	4506116	LOWER TUBE WELDMENT, 10" X 41" - 15"	-	-	-	1	-	-
2	4506102	LOWER TUBE WELDMENT, 10" X 36" - 10"	-	-	-	1	-	-
2	4503136	LOWER TUBE BUNDLE, 8X51" - 25"	-	-	-	1	-	-
2	4503135	LOWER TUBE BUNDLE, 8X46" - 20"	-	-	-	1	-	-
2	4503134	LOWER TUBE BUNDLE, 8X41" - 15"	-	-	-	1	-	-
2	4503133	LOWER TUBE BUNDLE, 8X36" - 10"	1	-	-	-	-	-
2	4506007	LOWER TUBE BUNDLE, 10X36" - 10"	-	-	-	1	-	-
2	4506008	LOWER TUBE BUNDLE, 10X41" - 15"	-	-	-	1	-	-
3	19402	UPPER FLIGHTING, 8 IN	1	1	1	-	-	4503123
3	19753	UPPER FLIGHTING, 10 IN	-	-	-	1	1	4506104
4	17534	INTAKE FLIGHTING, 8 IN	1	1	1	-	-	4503154
4	17535	INTAKE FLIGHTING, 10 IN	-	-	-	1	-	4506113
4A	19410	LOWER FLIGHTING, 51 X 8 IN - INC/INTAKE	-	-	-	1	-	4503158
4A	19409	LOWER FLIGHTING, 46 X 8 IN - INC/INTAKE	-	-	-	1	-	4503157
4A	19408	LOWER FLIGHTING, 41 X 8 IN - INC/INTAKE	-	-	-	1	-	4503156
4A	19407	LOWER FLIGHTING, 36 X 8 IN - INC/INTAKE	1	-	-	-	-	4503155
4A	19775	LOWER FLIGHTING, 41 X 10 IN - INC/INTAKE	-	-	-	1	-	4506117
4A	19758	LOWER FLIGHTING, 36 X 10 IN - INC/INTAKE	-	-	-	1	-	4506103
5	18702	DRIVESHAFT, 1-1/4 X 288 IN	1	1	1	1	1	4503122
6	4503144	DRIVESHAFT, 1-1/4 X 125 IN	-	-	-	1	-	-
6	4503143	DRIVESHAFT, 1-1/4 X 89 IN	-	-	-	1	-	-
6	4503142	DRIVESHAFT, 1-1/4 X 53 IN	-	-	-	1	-	-
6	4503141	DRIVESHAFT, 1-1/4 X 17 IN	1	-	-	1	-	-
7	18762	TRACK STOP	2	2	2	2	2	4503127
8	18763WH	TRACK SHOE	1	1	1	1	1	4503053
9	19255	48" DRIVESHAFT SHIELD	1	1	1	1	1	4503060
9	19254	42" DRIVESHAFT SHIELD	-	-	-	1	-	4503220
9	19928	24" DRIVESHAFT SHIELD	1	-	-	1	-	4503219
10	18829	60" DRIVESHAFT SHIELD	4	5	6	4	5	4503061
11	19256	SHIELD TIE-DOWN STRAP	6	6	7	6	6	4503062
12	19257	BEARING ADJUST PLATE, TOP	1	1	1	1	1	4503073
13	19398WH	INTAKE GUARD 8 IN	1	1	1	-	-	4503159
13	4503233	INTAKE GUARD W/BIN SWEEP MNT	1	1	1	-	-	-
13	19774WH	INTAKE GUARD 10 IN	-	-	-	1	1	4506115
14	17123WH	CLEVIS	1	1	1	-	-	4503068
14	17180WH	CLEVIS	-	-	-	1	-	4506100
15	19149	1" BUSHING	1	1	1	-	-	4503160
15	19776	1 1/4" BUSHING	-	-	-	1	1	-

FRAME ASSEMBLY



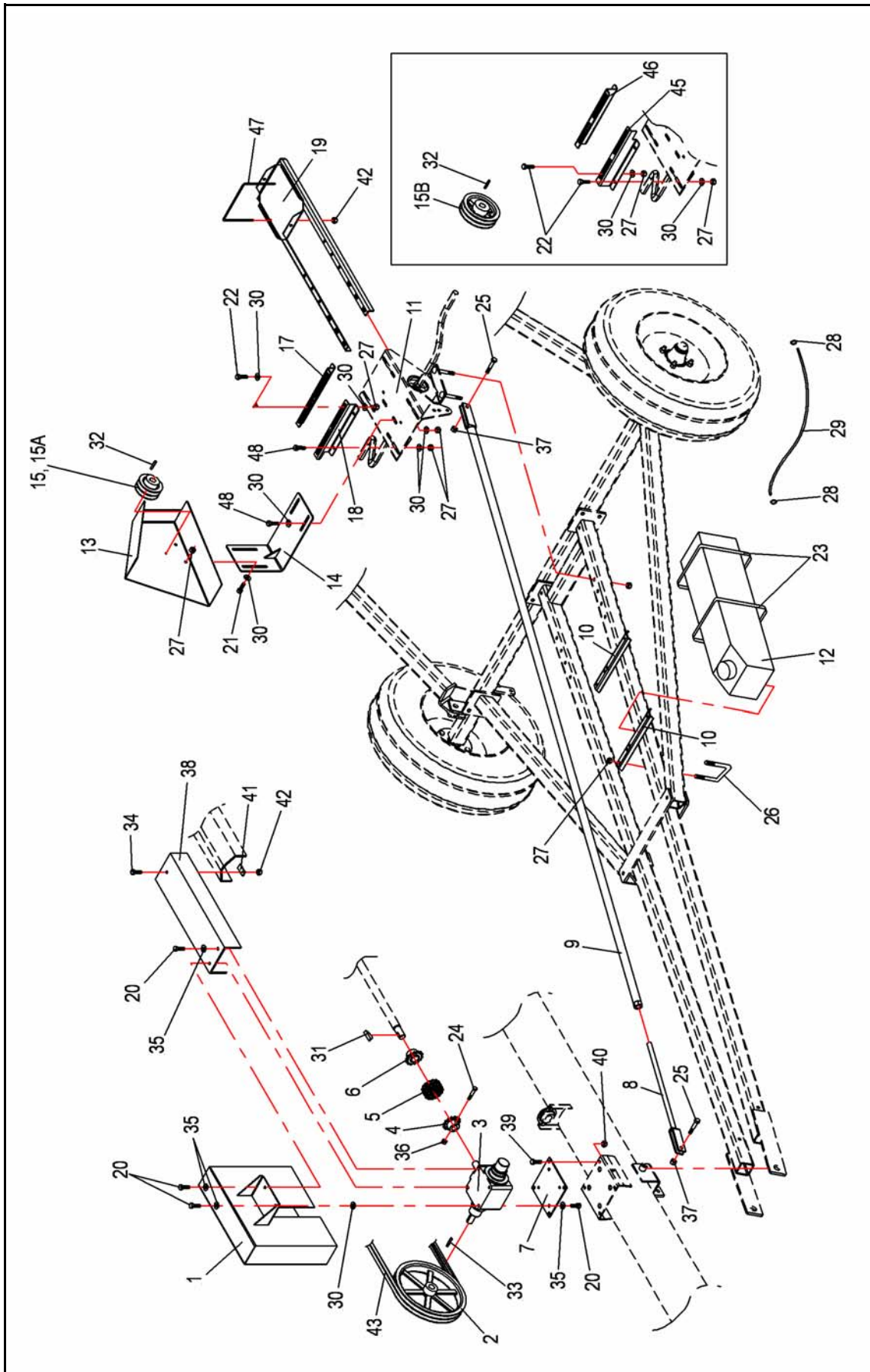
FRAME ASSEMBLY

ITEM	PART NO.	DESCRIPTION	8X36	8X41	8X46	8X51	10X36	10X41	CROSS REF.
25A	19261	RIM AG 4 BOLT	2	2	2	2	2	2	4500059-11
26	19273	WHEEL BOLT WB10	8	8	8	8	8	8	4500059-7
27	28445	3/8" U-BOLT TO FIT 2 1/2" HSS	2	3	3	3	2	3	9900038
28	28444	1/2" U-BOLT TO FIT 2 1/2" HSS	4	4	4	4	4	4	9900011
29	28446	BOLT, 3/4" X 2 1/2" GR5	2	2	2	2	2	2	9900635
30	18947	BOLT, 1/2" X 4" GR5	2	4	4	4	2	4	9900647
31	19593	BOLT, 3/4" X 6-1/2" GR5	1	1	1	1	1	1	9900039
32	17403	BOLT, 1/2" X 2-1/2"	-	1	1	1	-	1	9900599
33	28443	CARRIAGE BOLT 7/16" X 3-1/2"	4	4	4	4	4	4	9900009
34	19600	NUT NYLOCK 5/8"	-	1	1	1	-	1	9900081
35	18955	BOLT 3/8" X 1" GR5	-	2	2	2	-	2	9900699
36	17402	NUT NYLOCK 3/8"	7	11	11	11	7	11	0601007
37	19599	NUT NYLOCK 1/2"	10	17	17	21	10	17	9900538
38	19601	NUT NYLOCK 3/4"	3	3	3	3	3	3	9900695
39	17392	WASHER 3/8" FLAT	4	6	6	6	4	6	0601008
40	17401	WASHER 1/2" FLAT	-	5	5	5	-	5	9900665
41	9900002	EYEBOLT, 5/8"	-	1	1	1	-	1	-
42	19147	1/4" CABLE CLAMP	2	2	2	2	2	2	4500081
43	19248	1/4" CABLE 35' LONG	1	-	-	-	1	-	4503056
43	12918	1/4" CABLE 40' LONG (HAND WINCH)	-	1	-	-	-	1	4503057
43	19249	1/4" CABLE 44' LONG (HAND WINCH)	-	-	1	-	-	-	4503067
43	18824	1/4" CABLE 49' LONG (HAND WINCH)	-	-	-	1	-	-	4503183
43	0207017	1/4" CABLE 38' LONG (HYD. WINCH)	-	1	-	-	-	-	-
43	4503065	1/4" CABLE 41' LONG (HYD. WINCH)	-	-	1	-	-	-	-
43	19250	1/4" CABLE 45.5' LONG (HYD WINCH)	-	-	-	1	-	-	4503182
44	19467	HUB 411 COMPLETE LESS NUT	2	2	2	2	2	2	4500059
45	17746	BOLT 1/2" X 1 1/2"	-	3	3	3	-	3	9900536
46	9900560	BOLT 1/2" X 2-1/4"	-	1	1	1	-	1	-
47	19975	BOLT 3/8" X 1-1/4" GR 5	3	3	3	3	3	3	9900631
48	19598	NUT NYLOCK 7/16"	4	4	4	4	4	4	9900643
49	9900197	PLASTIC CAP	4	4	4	4	4	4	-
50	19263	SPINDLE	2	2	2	2	2	2	4500010-4

ITEM	PART NO.	DESCRIPTION	8X36	8X41	8X46	8X51	10X36	10X41	CROSS REF.
1	4503002	51" LOWER ARM WELDMENT	-	-	-	1	-	-	-
1	4503208	46" LOWER ARM WELDMENT	-	-	1	-	-	-	-
1	4503198	41" LOWER ARM WELDMENT	-	1	-	-	-	1	-
1	4503193	36" LOWER ARM WELDMENT	1	-	-	-	1	-	-
2	4503003	OUTER SUPPORT ARM	2	2	2	2	2	2	-
3	4503004	AXLE WELDMENT W/SP TABS	1	1	1	1	1	1	-
4	4503006	LIFT ARM, 51", 211-15/16"	-	-	-	2	-	-	-
4	4503212	LIFT ARM, 46", 188-3/8"	-	-	2	-	-	-	-
4	4503202	LIFT ARM, 41", 164-5/16"	-	2	-	-	-	2	-
4	4503196	LIFT ARM, 36", 141"	2	-	-	-	2	-	-
5	4503007	LIFT ARM X-SUPPORT	-	-	-	1	-	-	-
6	19152	WINCH	1	1	1	1	1	1	0702001
7	4503059	HAND WINCH MOUNT PLATE	1	1	1	1	1	1	-
8	4503098	CABLE PULLEY MOUNT - OLD STYLE	-	*	*	*	-	*	-
	4503359	CABLE PULLEY MOUNT (PADLOCK)	-	1	1	1	-	1	-
9	4503108	CABLE PULLEY MOUNT STRAP	-	2	2	2	-	2	-
10	1900011	CABLE PULLEY	-	1	1	1	-	1	-
11	4503046	IDLER BRACKET PLATE	-	1	1	1	-	1	-
12	28447	PULLEY IDLER FLAT 1/2"	-	1	1	1	-	1	4500064
13	4503047	IDLER BASE PLATE	-	1	1	1	-	1	-
14	4503054	MOTOR MOUNT	1	1	1	1	1	1	-
15	4503110	MOUNT ANGLE	2	2	2	2	2	2	-
16	19264	INNER SEAL SE11	2	2	2	2	2	2	4500059-5
17	19265	INNER BEARING LM67048	2	2	2	2	2	2	4500059-3
18	19266	INNER RACE LM67010	2	2	2	2	2	2	4500059-4
19	19267	HUB W/CUPS (INCL. 16, 18, 20)	2	2	2	2	2	2	4500059-8
20	19268	OUTER RACE LM11910	2	2	2	2	2	2	4500059-2
21	19269	OUTER BEARING LM1949	2	2	2	2	2	2	4500059-1
22	19270	NUT, CASTELLATED 3/4 UNF	2	2	2	2	2	2	4500059-10
23	17757	COTTER PIN 3/16 X 2	2	2	2	2	2	2	2300198
24	19272	DUST CAP DC12	2	2	2	2	2	2	4500059-6
25	4503236	TIRE 15"	2	2	2	2	2	2	-



GAS/ELECTRIC DRIVE COMPONENTS

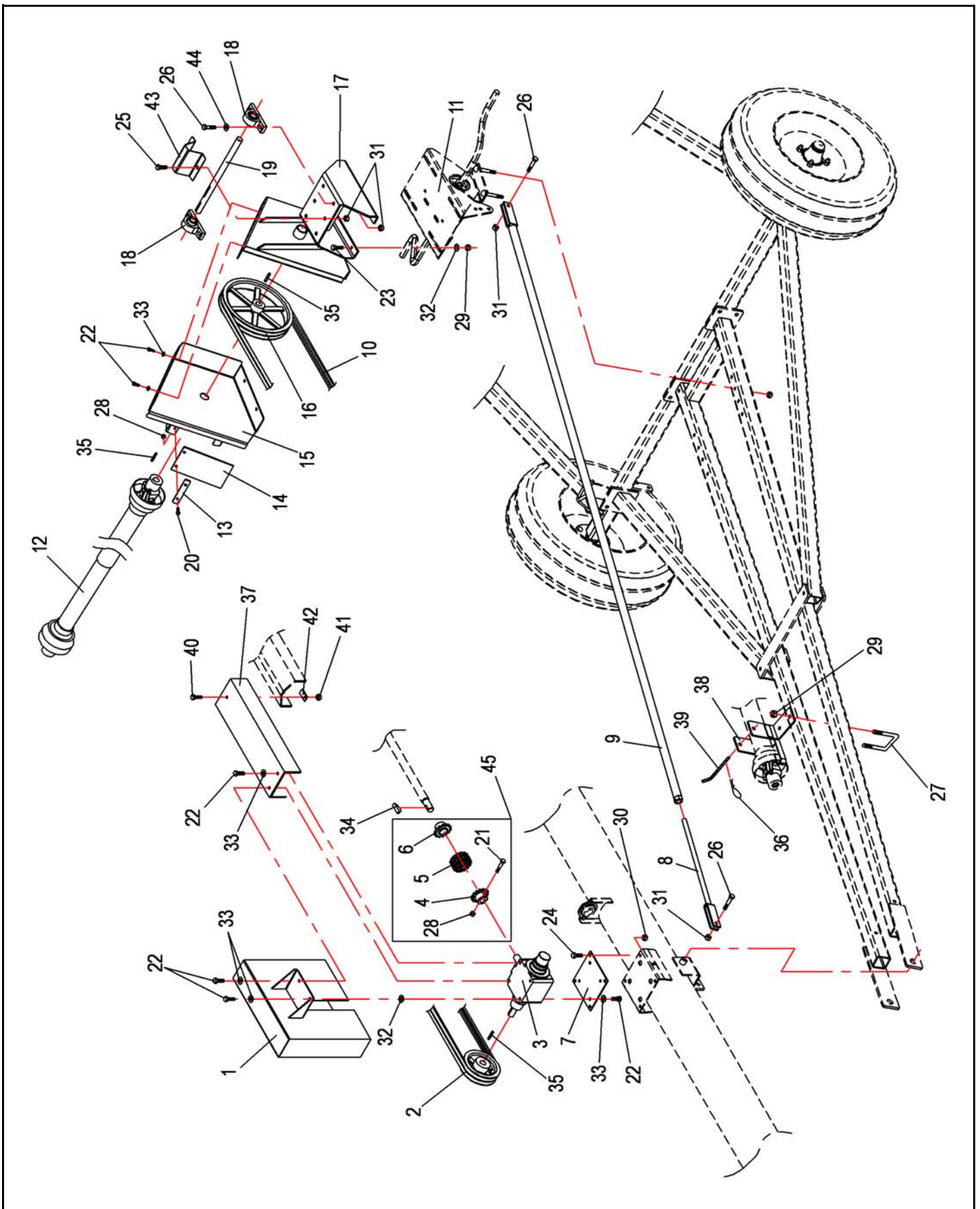


GAS/ELECTRIC DRIVE COMPONENTS

ITEM	PART NO.	DESCRIPTION	8X36	8X41	8X46	8X51	10X36	10X41	CROSS REF.
1	4503077	GEARBOX GUARD	1	1	1	1	1	1	
2	19613	SHEAVE, 13"	1	1	1	1	1	1	
3	19473	GEARBOX	1	1	1	1	1	1	4503064
3	28285	GEARBOX, REVERSIBLE	1	1	1	1	1	1	4503259
4	17591	COUPLING SPROCKET, BOLT STYLE	1	1	1	1	1	1	4503132
5	19559	COUPLING CHAIN W/CONNECTOR LINK	1	1	1	1	1	1	4503216
6	19557	COUPLING SPROCKET, KEY STYLE	1	1	1	1	1	1	4503217
7	19633	GEARBOX MOUNT PLATE	1	1	1	1	1	1	4503010
8	4503161	LEVELER BAR CLEVIS	1	-	1	1	1	-	
	4506119	LEVELER BAR CLEVIS, BH8/1041	-	1	-	-	-	1	
9	4503171	LEVELER BAR TUBE, 51"	-	-	-	1	-	-	
9	4503170	LEVELER BAR TUBE, 46"	-	-	1	-	-	-	
9	4503169	LEVELER BAR TUBE, 41"	-	1	-	-	-	1	
9	4503168	LEVELER BAR TUBE, 36"	1	-	-	-	1	-	
10	4503190	TANK MOUNT BRACKET, SINGLE	2	2	2	2	2	2	
10	51140	TANK MNT BKT, DBL (GAS & HYD TANK)	2	2	2	2	2	2	4503111
11	4503054	MOTOR MOUNT	1	1	1	1	1	1	
12	1200051	PLASTIC FUEL TANK	1	1	1	1	1	1	
13	4503005	MOTOR PULLEY GUARD	1	1	1	1	1	1	
14	4503117	MOTOR PULLEY GUARD MOUNT	1	1	1	1	1	1	
15	A122	PULLEY 4.2" X 1-1/8"	1	1	1	1	1	1	1902216
15A	A110	PULLEY 4.2" X 1"	1	1	1	1	1	1	1901216
15B	18836	PULLEY 6.55"	1	1	1	1	1	1	4503072
17	4503176	GAS MOTOR MOUNT DISCHARGE SIDE	1	1	1	1	1	1	
18	4503177	GAS MOTOR MOUNT INTAKE SIDE	1	1	1	1	1	1	
19	4503052	BATTERY MOUNT	1	1	1	1	1	1	
20	19540	BOLT, 3/8" X 3/4" GR5	7	7	7	7	7	7	9900630
21	18955	BOLT, 3/8" X 1" NC GR5 PLTD	2	2	2	2	2	2	9900689
22	28450	BOLT, 3/8" X 1-3/4" GR5 UNC PLTD	4	4	4	4	4	4	9900715
23	9900216	CLAMP GEAR	2	2	2	2	2	2	
24	19965	BOLT 5/16" X 2-3/4"	1	1	1	1	1	1	9900114
25	19974	BOLT 1/2" X 1-3/4" GR 5	2	2	2	2	2	2	9900133
26	28445	3/8" U-BOLT TO FIT 2-1/2" HSS	2	2	2	2	2	2	9900038
27	17402	NUT NYLOCK 3/8"	1	1	1	1	1	1	0601007
28	1200024	HOSE CLAMP 1/4"	2	2	2	2	2	2	
29	1200023	HOSE 1/4" X 3'	1	1	1	1	1	1	
30	17392	WASHER 3/8" FLAT	1	1	1	1	1	1	0601008
31	19224	KEY WOODRUFF 1/4" X 1"	1	1	1	1	1	1	4503192
32	19606	KEY 1/4" X 1-1/2"	2	2	2	2	2	2	700615
33	17592	CHAIN COUPLER 12T (4,5,6,24,36)	1	1	1	1	1	1	0310008
34	27113	BOLT 1/4" X 3/4" GR5 UNC PLTD	1	1	1	1	1	1	9900800
35	19604	WASHER 3/8" LOCK	7	7	7	7	7	7	9900528
36	19980	NUT NYLOCK 5/16"	1	1	1	1	1	1	9900520
37	19599	NUT NYLOCK 1/2"	2	2	2	2	2	2	9900538
38	19626	GEARBOX COUPLER SHIELD	1	1	1	1	1	1	4503063
39	19542	BOLT, 7/16" X 1"	4	4	4	4	4	4	4500068
40	19598	NUT, NYLOCK, 7/16"	4	4	4	4	4	4	9900643
41	4503066	SHIELD SECURING PLATE	1	1	1	1	1	1	
42	28449	NUT NYLOCK 1/4"	3	3	3	3	3	3	9900562
43	18689	B300 BELT	-	-	-	2	-	-	
43	19480	B270 BELT	-	-	2	-	-	-	4500078
43	19479	B240 BELT	-	2	-	-	-	2	
43	19478	B210 BELT	2	-	-	-	2	-	
45	4503167	ELECTRIC MOTOR MOUNT INTAKE	1	1	1	1	-	-	
46	4503166	ELECTRIC MOTOR MOUNT DISCHARGE	1	1	1	1	-	-	
47	28448	UBOLT SQ 1/4NCX8-1/4X9-3/4X4 THD PLD	1	1	1	1	1	1	4500071
48	19975	BOLT 3/8" X 1-1/4" GR5 UNC PLTD	6	6	6	6	6	6	9900531



PTO DRIVE COMPONENTS

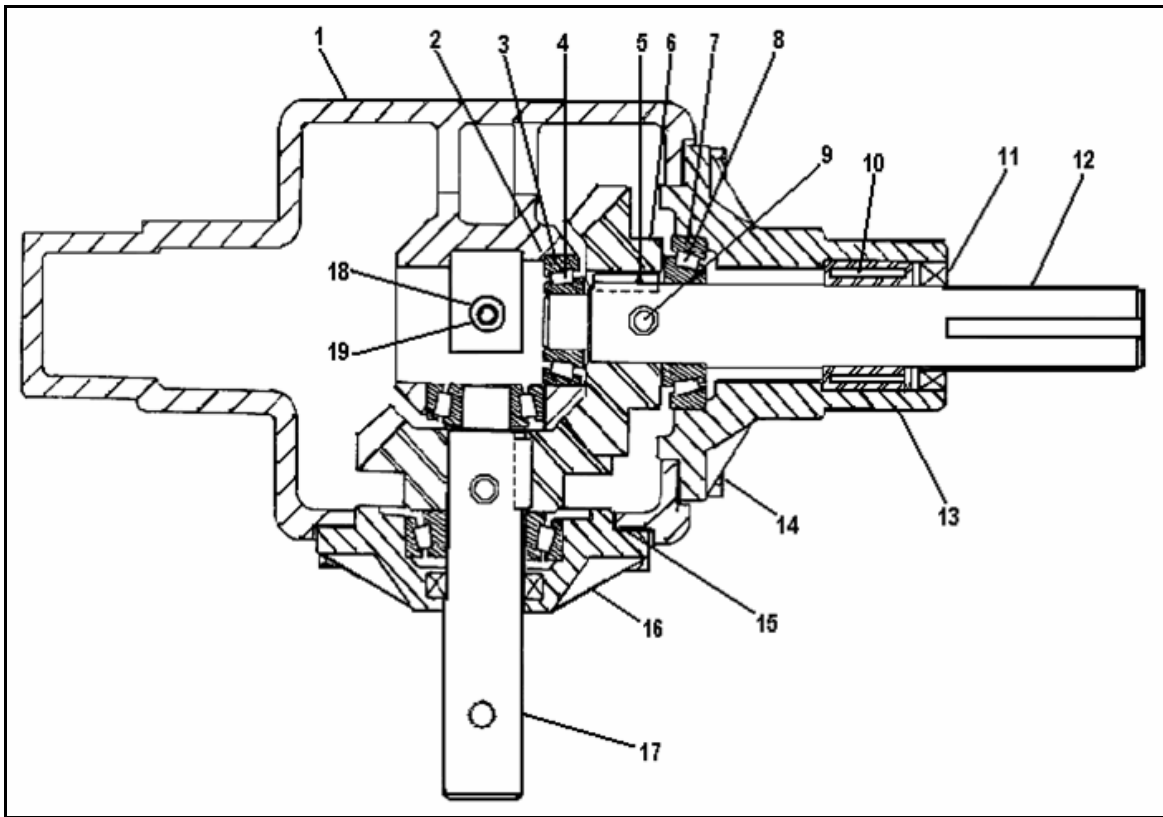


PTO DRIVE COMPONENTS

ITEM	PART NO.	DESCRIPTION	8x36'	8x41'	8x46'	8x51'	10x36'	10x41'	CROSS REF.
1	4503077	GEARBOX GUARD	1	1	1	1	1	1	
2	18836	PULLEY 6.55"	1	1	1	1	1	1	4503072
3	19473	GEARBOX	1	1	1	1	1	1	4503064
4	17591	COUPLING SPROCKET, BOLT STYLE	1	1	1	1	1	1	4503132
5	19559	COUPLING CHAIN W/CONNECTOR LINK	1	1	1	1	1	1	4503216
6	19557	COUPLING SPROCKET, KEY STYLE	1	1	1	1	1	1	4503217
7	19633	GEARBOX MOUNT PLATE	1	1	1	1	1	1	4503010
8	4503161	LEVELER BAR CLEVIS	1	1	1	1	1	1	
9	4503171	LEVELER BAR TUBE, 51'	-	-	-	1	-	-	
9	4503170	LEVELER BAR TUBE, 46'	-	-	1	-	-	-	
9	4503169	LEVELER BAR TUBE, 41'	-	1	-	-	-	1	
9	4503168	LEVELER BAR TUBE, 36'	1	-	-	-	1	-	
10	18689	B300 BELT	-	-	-	2	-	-	
10	19480	B270 BELT	-	-	2	-	-	-	
10	19479	B240 BELT	-	2	-	-	-	2	
10	19478	B210 BELT	2	-	-	-	2	-	
11	4503054	MOTOR MOUNT	1	1	1	1	1	1	
12	19945	60" PTO - DRIVELINE	1	1	1	1	1	1	4503225
13	4503222	PTO RUBBER MOUNT STRAP	1	1	1	1	1	1	
14	4503221	PTO RUBBER FLAP 5-1/4" X 9"	1	1	1	1	1	1	
15	4503089	PTO FRONT GUARD	1	1	1	1	1	1	
16	19613	SHEAVE, 13"	1	1	1	1	1	1	
17	4503084	PTO MOUNT	1	1	1	1	1	1	
18	28502	UJELPL205-100T 1" PILLOW BLOCK ASSY.	2	2	2	2	2	2	310031
19	4503093	PTO JACKSHAFT	1	1	1	1	1	1	
20	19538	BOLT 5/16" X 3/4" GR5 UNC PLTD	2	2	2	2	2	2	9900797
21	19965	BOLT 5/16" X 2-3/4"	1	1	1	1	1	1	9900114
22	19540	BOLT 3/8" X 3/4" GR5	11	11	11	11	11	11	9900530
23	18955	BOLT 3/8" X 1" GR5 UNC PLTD	4	4	4	4	4	4	9900699
24	19542	BOLT 7/16" X 1"	4	4	4	4	4	4	4500068
25	19231	BOLT 1/2" X 1" GR5 PLTD	2	2	2	2	2	2	9900558
26	19974	BOLT 1/2" X 1-3/4" GR5	6	6	6	6	6	6	9900133
27	28445	3/8" U-BOLT TO FIT 2 1/2" HSS	1	1	1	1	1	1	9900038
28	19980	NUT NYLOCK 5/16"	3	3	3	3	3	3	9900520
29	17402	NUT NYLOCK 3/8"	6	6	6	6	6	6	0601007
30	19598	NUT NYLOCK 7/16"	4	4	4	4	4	4	9900643
31	19599	NUT NYLOCK 1/2"	8	8	8	8	8	8	9900538
32	17392	WASHER 3/8" FLAT	5	5	5	5	5	5	0601008
33	19604	WASHER 3/8" LOCK	11	11	11	11	11	11	9900528
34	19224	KEY WOODRUFF 1/4" X 1"	1	1	1	1	1	1	4503192
35	19606	KEY 1/4" X 1-1/2"	3	3	3	3	3	3	700615
36	17383	HAIR PIN	1	1	1	1	1	1	0309027-2
37	19626	GEARBOX COUPLER SHIELD	1	1	1	1	1	1	4503063
38	4503094	PTO TRANSPORT SADDLE	1	1	1	1	1	1	
39	19648	PIN PTO TRANSPORT SADDLE	1	1	1	1	1	1	4503223
40	27113	BOLT 1/4" X 3/4" GR5 UNC PLTD	1	1	1	1	1	1	9900800
41	28449	NUT NYLOCK 1/4"	1	1	1	1	1	1	9900562
42	4503066	SHIELD SECURING PLATE	1	1	1	1	1	1	
43	4503092	PTO SHAFT GUARD	1	1	1	1	1	1	
44	17401	WASHER 1/2" FLAT	4	4	4	4	4	4	9900565
45	17592	CHAIN COUPLER, 12T (4,5,6,21,28)	1	1	1	1	1	1	0310008

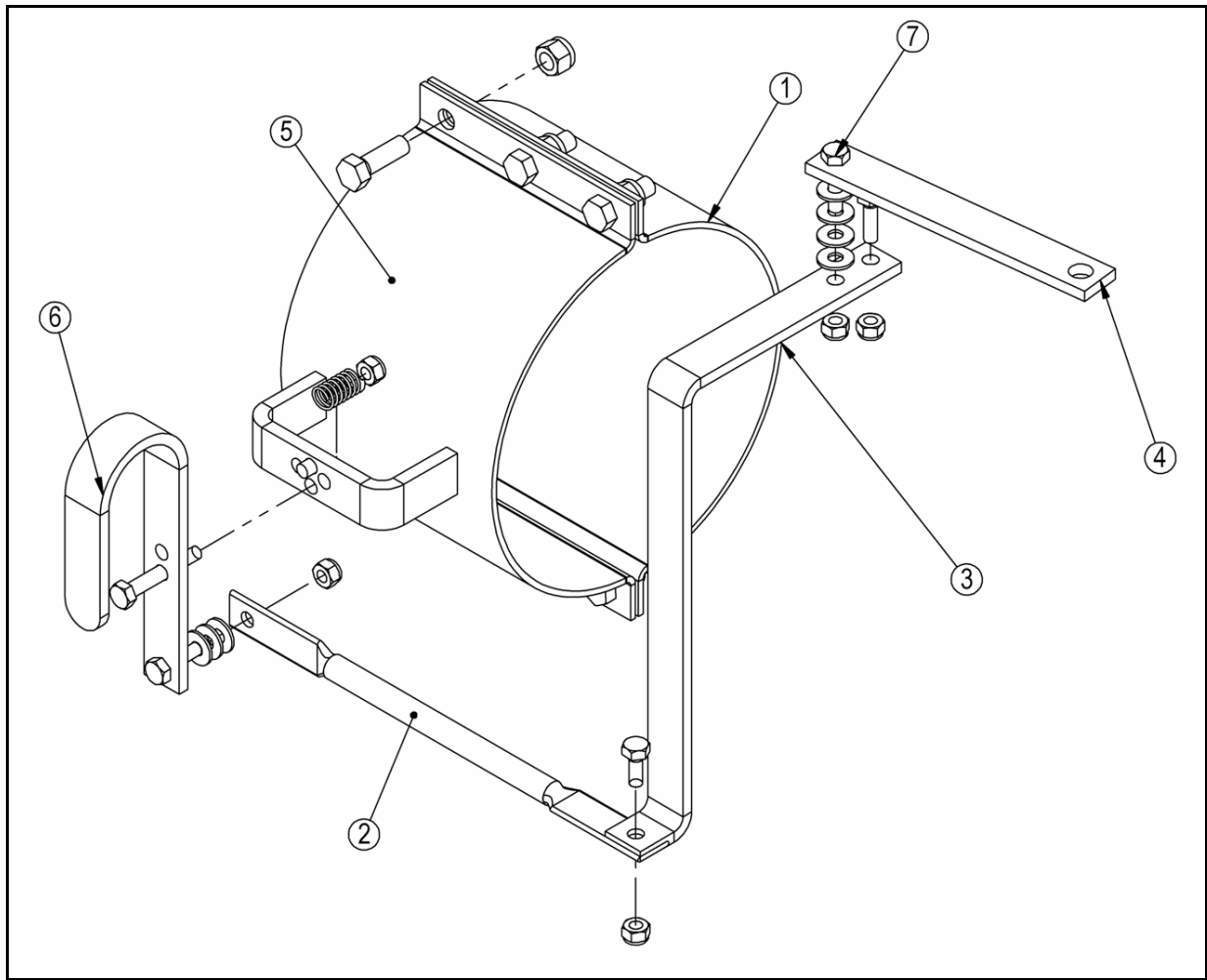
M

GEARBOX



ITEM	PART NO.	DESCRIPTION	CROSS REF.
1	18376	HOUSING	
2	18377	SHIM (.005)	
3	18378	BEARING CUP, TIMKEN #LM 11710	
4	18379	BEARING CONE, TIMKEN #LM 11749	
5	18380	SQ. KEY, 1/4" X 3/4"	
6	18381	GEAR	
7	18382	BEARING CUP, TIMKEN #LM 44610	
8	18383	BEARING CONE, TIMKEN #LM 44643	
9	18079	ROLL PIN	
10	18385	BUSHING	
11	18386	SEAL, (NATIONAL #470553, CR #9843)	
12	18387	SHAFT	
13	18388	CAP	
14	18091	BOLT, 5/16 - 18 X 1", GR. 2	
15	18390	GASKET (.005)	
16	18391	CAP	
17	18392	SHAFT	
18	18393	1/4" PIPE PLUG-SOLID	
19	18394	1/4" PIPE PLUG-VENTED	
	19473	GEARBOX, COMPLETE	4503064

REVERSIBLE GEARBOX LINKAGE

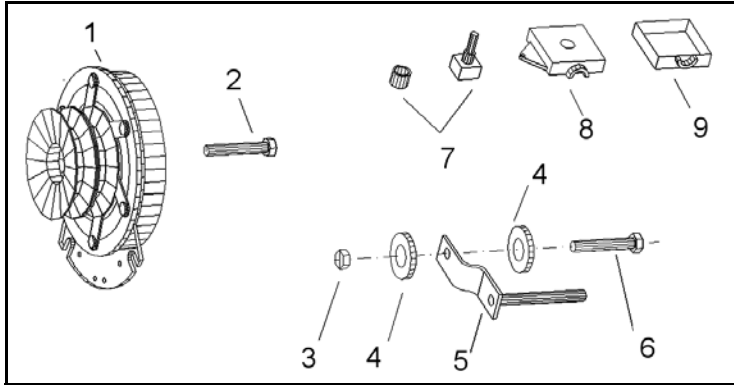


ITEM	PART NO.	DESCRIPTION	QTY	CROSS REF.
1	27454WH	HALF CLAMP RING, 8"Ø X 3 HOLE X 6" WIDE	1	
	27235WH	HALF CLAMP RING, 10"Ø X 3 HOLE X 6" WIDE	1	
2	4503341	LINKAGE, REV G/BOX, 36' AUGER	1	
	4503342	LINKAGE, REV G/BOX, 41' AUGER	1	
	4503344	LINKAGE, REV G/BOX, 51' AUGER	1	
3	4503345	LINKAGE, 1/4" X 1" X 17-1/2", REV G/BOX	1	
4	4503346	LINKAGE, 1/4" X 1" X 7-3/16", REV G/BOX	1	
5	4503348	CLAMP WELD'T, REV G/BOX, 8" AUGER	1	
	4503349	CLAMP WELD'T, REV G/BOX, 10" AUGER	1	
6	4503350	HANDLE, WELDMENT, REV G/BOX	1	
7	4503355	BOLT KIT, REVERSIBLE GEARBOX	1	



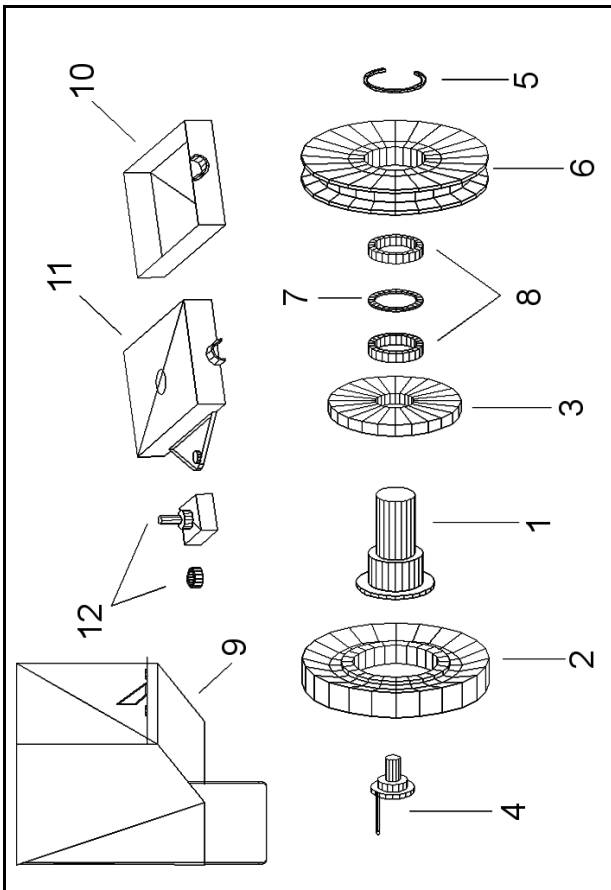
Electric Clutch

ENGINE MOUNT



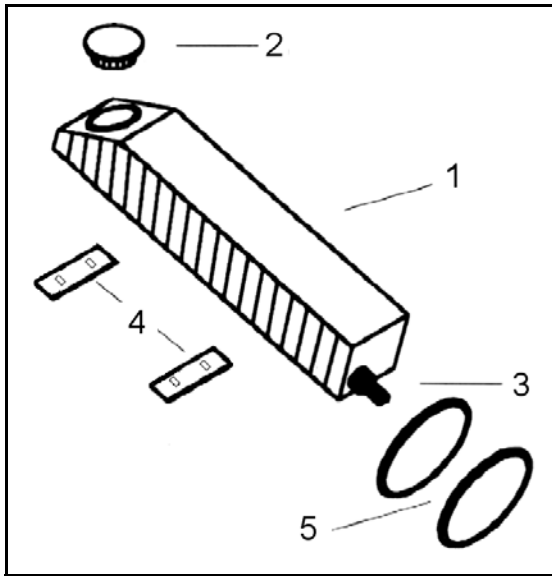
ITEM	PART NO.	DESCRIPTION	QTY	CROSS REF.
1	28593	ELECTRIC CLUTCH ASSEMBLY, 1-1/8"	1	0603001
	28594	ELECTRIC CLUTCH ASSEMBLY, 1"		0603006
2	28595	BOLT, 3/8" UNF X 3" GRADE 8	1	0601006
3	17402	NYLON LOCK NUT, 3/8"	1	0601007
4	17392	FLAT WASHER, 3/8"	2	0601008
5	28597	BRACKET, CLUTCH STOP	1	0601009
6	19975	BOLT, 3/8" UNC X 1/25", GR5	1	9900531
7	28598	SWITCH WITH RUBBER BOOT	2	0600568
8	28599	SWITCH BOX, TOP	2	0600571
9	28600	SWITCH BOX, BOTTOM	2	0600570
	28601	WIRING HARNESS (NOT SHOWN)	1	0601012
	28602	PIGTAIL, NNS CLUTCH (NOT SHOWN)	1	0603002

GEARBOX



ITEM	PART NO.	DESCRIPTION	QTY	CROSS REF.
1	0600554	HUB (SPECIFY SIZE)	1	
2	0600556	ELECTROMAGNET	1	
3	0600558	CLUTCH PLATE	1	
4	0600560	BRUSHES WITH SWIVEL	1	
5	0600561	EXTERNAL SNAP RING	1	
6	0600562	12" PULLEY, B-WIDTH, DOUBLE GROOVE	1	
	0600564	GREASE NIPPLE (NOT SHOWN)	1	
7	0600569	INTERNAL SNAP RING 3" OD	1	
8	0600567	BALL BEARING 6009 2RS	2	
9	0600566	PULLEY GUARD, SAKUNDIAK	1	
	0600566-1	PULLEY GUARD, BRANDT	1	
	0600566-2	PULLEY GUARD, WESTFIELD J SERIES	1	
10	28600	SWITCH BOX, BOTTOM	1	0600570
11	28599	SWITCH BOX, TOP	1	0600571
12	28598	SWITCH WITH RUBBER	2	0600568
	0600572	WIRING HARNESS	1	
	0600003	CLUTCH UPDATE INCLUDES REBUILD ARBOR BEARINGS AND MACHINING		
	0600004	O/S CLUTCH LESS WIRING		

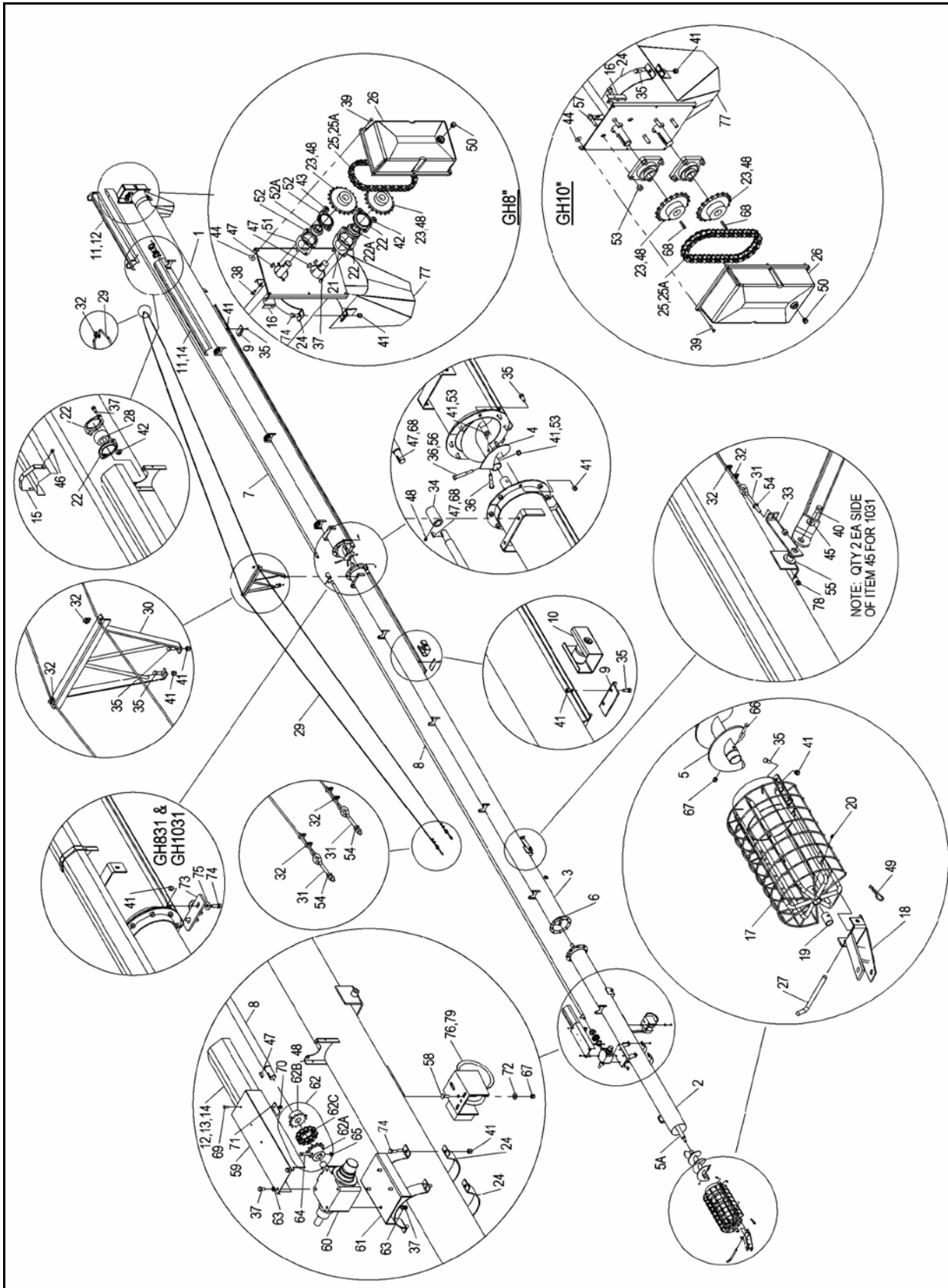
GAS TANK ASSEMBLY



ITEM	PART NO.	DESCRIPTION	QTY	CROSS REF.
1	1200051	GAS TANK ONLY, 22 L WITH CAP AND FITTING	1	
2	1200011	RESERVOIR CAP	1	
3	1200020	BULKHEAD FITTING - 1/4" BARB	1	
4	0102012	RESERVOIR BRACKET, N/S SINGLE	2	
5	9900216	CLAMP GEAR, 32"	2	
	1200023	3' OF 1/4" HOSE (NOT SHOWN)	1	
	1200024	1/4" HOSE CLAMPS (NOT SHOWN)	2	
	1200053	REGULAR GAS TANK C/W SINGLE MOUNTING BRACKETS, HOSES & CLAMPS, 22 L	1	

GH Auger

TUBE ASSEMBLY

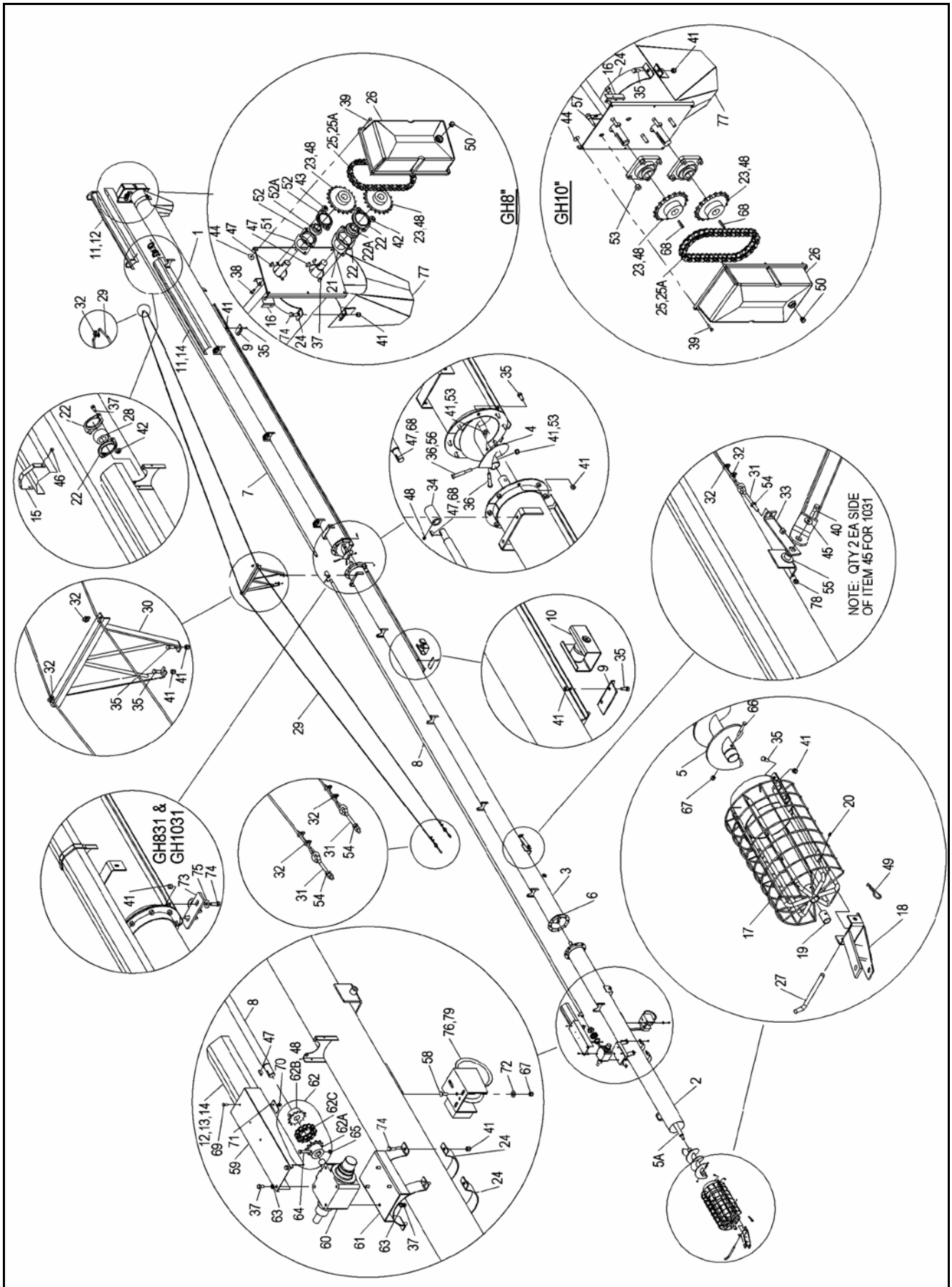


TUBE ASSEMBLY (PICTURE REPEATED AND TABLE CONTINUED ON NEXT PAGE)

ITEM	PART NO.	DESCRIPTION	EMD	PTO	EMD	PTO	EMD	PTO	EMD	PTO	CROSS REF.
			8X31'	8X31'	8X41'	8X41'	8X51'	8X51'	10X31'	10X31'	
1	4507043G	UPPER TUBE WELDMENT, GH8"	1	1	1	1	1	1	-	-	
1	4507049G	UPPER TUBE WELDMENT, GH10"	-	-	-	-	-	-	1	1	
2	4507042G	LOWER TUBE WELDMENT, 8"	1	1	-	-	1	1	-	-	
2	4507058G	LOWER TUBE WELDMENT, 8"	-	-	1	1	-	-	-	-	
2	4507055G	LOWER TUBE WELDMENT, 10"	-	-	-	-	-	-	1	1	
3	4507041G	MIDDLE TUBE WELDMENT, 8" X 51'	-	-	-	-	1	1	-	-	
4	19402	UPPER FLIGHTING, 8 IN	1	1	1	1	1	1	-	-	4507069
4	19753	UPPER FLIGHTING, 10 IN	-	-	-	-	-	-	1	1	4507067
5	17534	INTAKE FLIGHTING, 8 IN	1	1	1	1	1	1	-	-	4503154
5	17535	INTAKE FLIGHTING, 10 IN	-	-	-	-	-	-	1	1	4506113
5A	19407	LOWER FLIGHTING, 8 IN	1	1	-	-	1	1	-	-	4503155
5A	19408	LOWER FLIGHTING, 8 IN	-	-	1	1	-	-	-	-	4503156
5A	19758	LOWER FLIGHTING, 10 IN	-	-	-	-	-	-	1	1	4506103
6	16227	MIDDLE FLIGHTING, 8 IN	-	-	-	-	1	1	-	-	
7	4507026	UPR DRIVESHAFT GH8", 1-1/4 X 249 IN	1	1	1	1	1	1	-	-	
7	4507031	UPR DRIVESHAFT GH10", 1-1/4 X 245.5 IN	-	-	-	-	-	-	1	1	
8	7807030	DRIVESHAFT, 1-1/4 X 297.5 IN	-	-	-	-	-	-	1	-	
8	4507029	DRIVESHAFT, 1-1/4 X 159.5 IN	-	-	-	-	1	-	-	-	
8	4507028	DRIVESHAFT, 1-1/4 X 177.5 IN	-	-	-	1	-	-	-	-	
8	4507027	DRIVESHAFT, 1-1/4 X 74.5 IN	-	-	1	-	-	-	-	-	
8	4507025	DRIVESHAFT, 1-1/4 X 57.5 IN	-	1	-	-	-	-	-	-	
8	4507033	DRIVESHAFT, 1-1/4 X 63 IN	-	-	-	-	-	-	-	1	
9	18762	TRACK STOP	2	2	2	2	2	2	2	2	4503127
10	18763WH	TRACK SHOE	1	1	1	1	1	1	1	1	4503053
11	19255	48" DRIVESHAFT SHIELD	1	1	1	1	1	1	3	5	4503060
12	19254	42" DRIVESHAFT SHIELD	-	-	1	-	-	-	1	1	4503220
13	19928	24" DRIVESHAFT SHIELD	1	1	-	1	-	1	-	1	4503219
14	18829	60" DRIVESHAFT SHIELD	3	4	4	6	6	8	1	-	4503061
15	19256	SHIELD TIE-DOWN STRAP	5	6	6	8	7	10	5	7	4503062
16	19257	UPPER SHIELD ATTACH BRACKET	1	1	1	1	1	1	-	-	
16	19257	UPPER SHIELD ATTACH BRACKET	-	-	-	-	-	-	1	1	
17	19398WH	INTAKE GUARD 8 IN	1	1	1	1	1	1	-	-	4503159
17	19774WH	INTAKE GUARD 10 IN	-	-	-	-	-	-	1	1	4506115
18	17123WH	CLEVIS	1	1	1	1	1	1	-	-	4503068
18	17180WH	CLEVIS	-	-	-	-	-	-	1	1	4506100
19	19149	1" BUSHING	1	1	1	1	1	1	-	-	4503160
19	19776	1 1/4" BUSHING	-	-	-	-	-	-	1	1	
20	19222	PRESS-IN GREASE FITTING 5/16"	1	1	1	1	1	1	1	1	2300028
21	17168	GASKET FOR 1 1/4" FLANGETTE BEARING	1	1	1	1	1	1	-	-	4503214
22	18695	1 1/4" BEARING FLANGETTE, SINGLE	10	12	12	16	16	20	10	12	4500062
22A	18853	1 1/4" BRG INSERT, LESS FLANGETTES	1	1	1	1	1	1	-	-	4503131
	19567	1 1/4" FLANGE BEARING, 4 BOLT	-	-	-	-	-	-	2	2	4500067
	18852	1 1/4" BRG INSERT, LESS FLANGE	-	-	-	-	-	-	2	2	9900856
23	19946	GH8" SPROCKET, 60B20X1"	2	2	2	2	2	2	-	-	
23	19779	GH10" SPROCKET, 80B18X1.25"	-	-	-	-	-	-	2	2	
24	19460	HALF BAND, 8 X 2	3	3	3	3	3	3	-	-	
24	19801	HALF BAND, 10 X 2 1/2	-	-	-	-	-	-	3	3	
25	19432	ROLLER CHAIN W/CONNECTOR GH8	1	1	1	1	1	1	-	-	4503129
25	19781	ROLLER CHAIN W/CONNECTOR GH10	-	-	-	-	-	-	1	1	4507064
25A	19433	RC #60 CONNECTOR LINK, GH8	1	1	1	1	1	1	-	-	9900771-2
25A	19323	RC #80 CONNECTOR LINK, GH10	-	-	-	-	-	-	1	1	0500711B
	17400	CHAIN LINK,#80,HALF LINK, GH10	-	-	-	-	-	-	-	-	
26	4500085A	OIL BATH COVER, GH10"	-	-	-	-	-	-	1	1	
26	4503126A	OIL BATH COVER GH8"	1	1	1	1	1	1	-	-	
27	4503069	CLEVIS PIN	1	1	1	1	1	1	1	1	
28	8": 18692 / 10": 18693	HARDWOOD BEARING	4	5	5	7	7	9	5	6	4500063A
29	27964	AIRCRAFT CABLE, 51' TRUSS (1/4" X 62)	-	-	-	-	1	1	-	-	4507022
30	19324WH	TRUSS SUPPORT BRACKET	-	-	-	-	1	1	-	-	4503070
31	19331	EYEBOLT 1/2-13 X 5" W/NUT	-	-	-	-	2	2	-	-	4503071
32	19147	1/4" CABLE CLAMP	-	-	-	-	7	7	-	-	4500081
33	19723	TRUSS CABLE ANCHOR	-	-	-	-	2	2	-	-	4503357
34	19119	DRIVESHAFT COUPLER X 1 IN	-	1	1	1	1	1	-	-	4503149

M

TUBE ASSEMBLY CONT'D

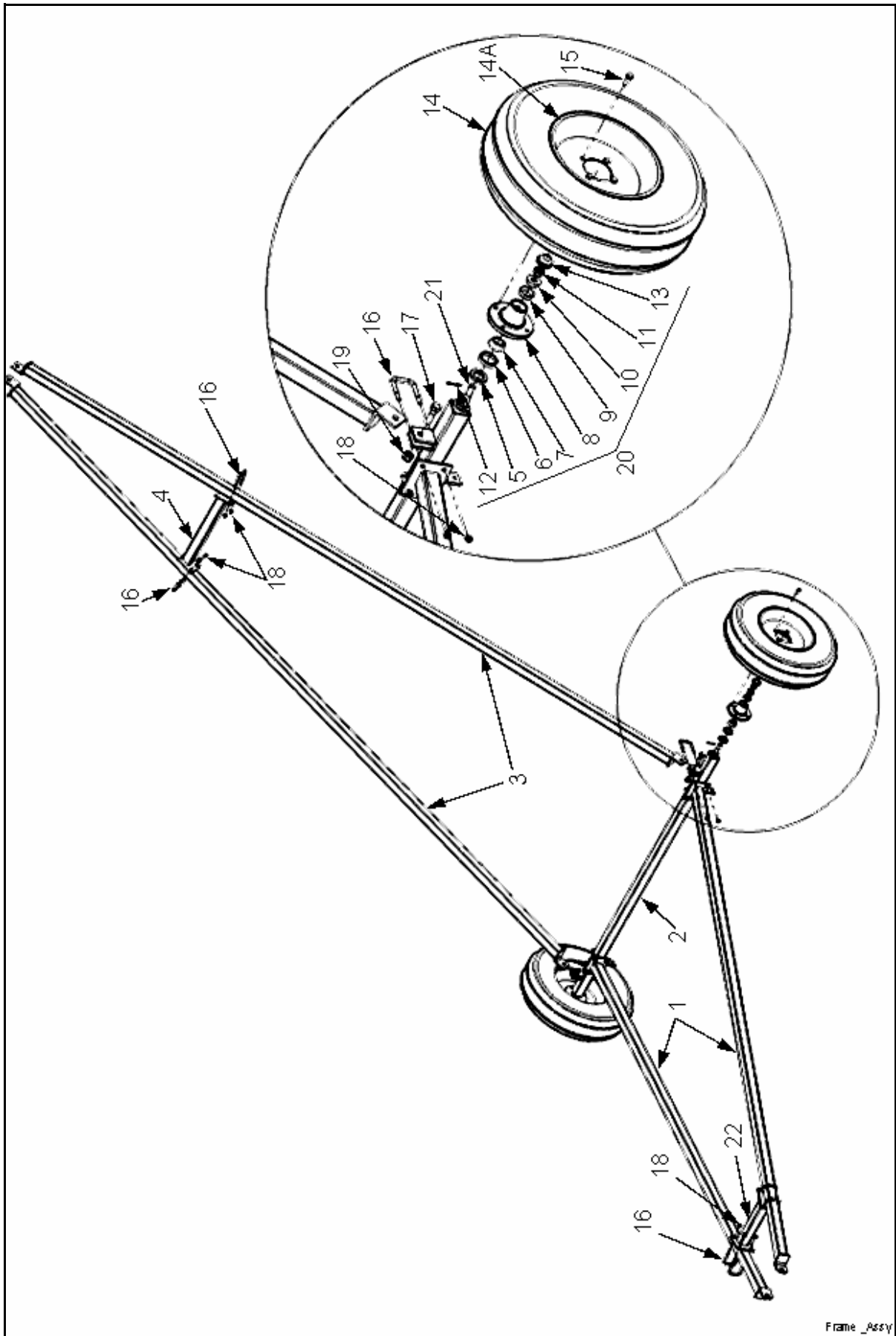


TUBE ASSEMBLY CONT'D

ITEM	PART NO.	DESCRIPTION	EMD	PTO	EMD	PTO	EMD	PTO	EMD	PTO	CROSS REF.	
			8X31'	8X31'	8X41'	8X41'	8X51'	8X51'	10X31'	10X31'		
34	19770	DRIVESHAFT COUPLER X 1 1/4 IN	-	-	-	-	-	-	-	-	1	
35	19542	BOLT, 7/16" - 14 X 1"	18	18	18	18	28	28	18	18		4500068
36	19545	BOLT, 7/16" - 14 X 2-1/4" GR8	2	2	2	2	4	4	-	-		9900128
37	19540	BOLT, 3/8" - 16 X 3/4"	16	18	18	22	22	26	16	18		9900530
38	19538	BOLT, 5/16" - 18 X 3/4"	2	2	2	2	2	2	-	-		9900797
39	19988	BOLT, 1/4" - 20 X 1", GR5	6	6	6	6	6	6	6	6		9900603
40	27816	BOLT, 1/2" - 13 X 2"	2	2	2	2	2	2	2	2		9900559
41	19598	LOCKNUT, 7/16" - 14	28	28	26	26	38	38	26	26		9900643
42	19596	FLANGE NUT, 3/8" - 16	10	12	12	16	16	20	10	12		9900788
43	19595	FLANGE NUT, 5/16"	2	2	2	2	2	2	-	-		9900129
44	19594	FLANGE NUT, 1/4" - 20	6	6	6	6	6	6	6	6		9900130
45	17401	WASHER, 1/2" FLAT	2	2	2	2	2	2	4	4		9900565
46	19274	SELF-TAPPING SCREW, 1/4-14X5/8"	10	12	12	16	16	20	10	14		9900132
47	19224	WOODRUFF KEY, 1/4" X 1"	3	5	5	5	5	5	-	-		4503192
48	19225	SETSCREW, 3/8" - 16 X 3/8"	3	5	5	5	5	5	3	5		9900131
49	17383	HAIR PIN	1	1	1	1	1	1	1	1		0309027-2
50	17179	3/8" NPT PLUG	1	1	1	1	1	1	1	1		9900685
51	17167	GASKET FOR 1" FLANGETTE BEARING	1	1	1	1	1	1	-	-		4503215
52	18694	1" BEARING FLANGETTE, SINGLE	2	2	2	2	2	2	-	-		4503128
52A	18817	1" BRG INSERT, LESS FLANGETTES	1	1	1	1	1	1	-	-		4503130
53	19599	LOCK NUT, 1/2"	-	-	-	-	-	-	10	10		9900538
54	17756	NUT JAM , 1/2"	-	-	-	-	2	2	-	-		9900678
55	9900576	WASHER FLAT 1" PLT	2	2	2	2	2	2	2	2		
56	19798	BOLT, 1/2-13 X 2-3/4" GR8 PLD	-	-	-	-	-	-	2	2		9900169
57	19974	BOLT, 1/2" X 1-3/4" GR5 PLD	-	-	-	-	-	-	8	8		9900133
58	27986	CARRIAGE BOLT, 3/8" X 1" GR5 PLD	3	3	3	3	3	3	3	3		
59	19626	FLEX COUPLER GUARD	1	1	1	1	1	1	1	1		4503063
60	19473	GEARBOX	1	1	1	1	1	1	1	1		4503064
61	19920	GEARBOX MOUNT 8"	1	1	1	1	1	1	-	-		
61	19800	GEARBOX MOUNT 10"	-	-	-	-	-	-	1	1		4507060
62	17592	CHAIN COUPLING ASSY 12T - GH8"	1	1	1	1	1	1	-	-		0310008
62	19803	CHAIN COUPLING ASSY 12T - GH10"	-	-	-	-	-	-	1	1		4507063
62A	17591	CPLG SPROCKET - BOLTED X 1"	1	1	1	1	1	1	1	1		4503132
62B	19559	CPLG SPROCKET - KEYED X 1"	1	1	1	1	1	1	-	-		4503216
62B	19802	CPLG SPROCKET - KEYED X 1 1/4"	-	-	-	-	-	-	1	1		
62C	19557	CPLG CHAIN W/CONNECTING LINK	1	1	1	1	1	1	1	1		4503217
63	19604	WASHER 3/8" LOCK	6	6	6	6	6	6	6	6		9900528
64	17631	BOLT 5/16 X 2 1/2"	1	1	1	1	1	1	1	1		9900524
65	19980	NUT NYLOCK 5/16"	1	1	1	1	1	1	1	1		9900520
66	18699	BOLT 3/8 X 2 1/2"	1	1	1	1	1	1	-	-		9900512
66	9900585	BOLT 3/8 X 3"	-	-	-	-	-	-	1	1		
67	17402	NUT NYLOCK 3/8"	4	4	4	4	4	4	4	4		0601007
68	19606	KEY, 1/4 X 1 1/2 IN	-	-	-	-	-	-	3	5		700615
69	9900800	BOLT, 1/4" X 3/4" GR5 PLD	1	1	1	1	1	1	1	1		
70	28449	NUT NYLOCK 1/4"	1	1	1	1	1	1	1	1		9900562
71	4503066	SHIELD SECURING PLATE	1	1	1	1	1	1	1	1		
72	17392	WASHER, 3/8" FLAT	3	3	3	3	3	3	3	3		0601008
73	4507077	CABLE ANCHOR	1	1	-	-	-	-	1	1		
74	9900584	BOLT 7/16 X 1 1/2" GR5 PLD	8	8	6	6	6	6	8	8		
75	9900555	WASHER 7/16" FLAT	2	2	-	-	-	-	2	2		
76	19152	WINCH, K1550	1	1	1	1	1	1	1	1		0702001
77	18028WH	STRAP ON SPOUT 8"	1	1	1	1	1	1	-	-		
77	18029WH	STRAP ON SPOUT 10"	-	-	-	-	-	-	1	1		4504116
78	9900945	NUT, LOCKING JAM 1/2"	2	2	2	2	2	2	2	2		
79	19248	LIFT CABLE 1/4" X 35 FT	1	1	-	-	-	-	1	1		4503056
79	19249	LIFT CABLE 1/4" X 44 FT	-	-	1	1	-	-	-	-		4503067
79	4503058	LIFT CABLE 1/4" X 60 FT	-	-	-	-	1	1	-	-		4503058

M

FRAME ASSEMBLY

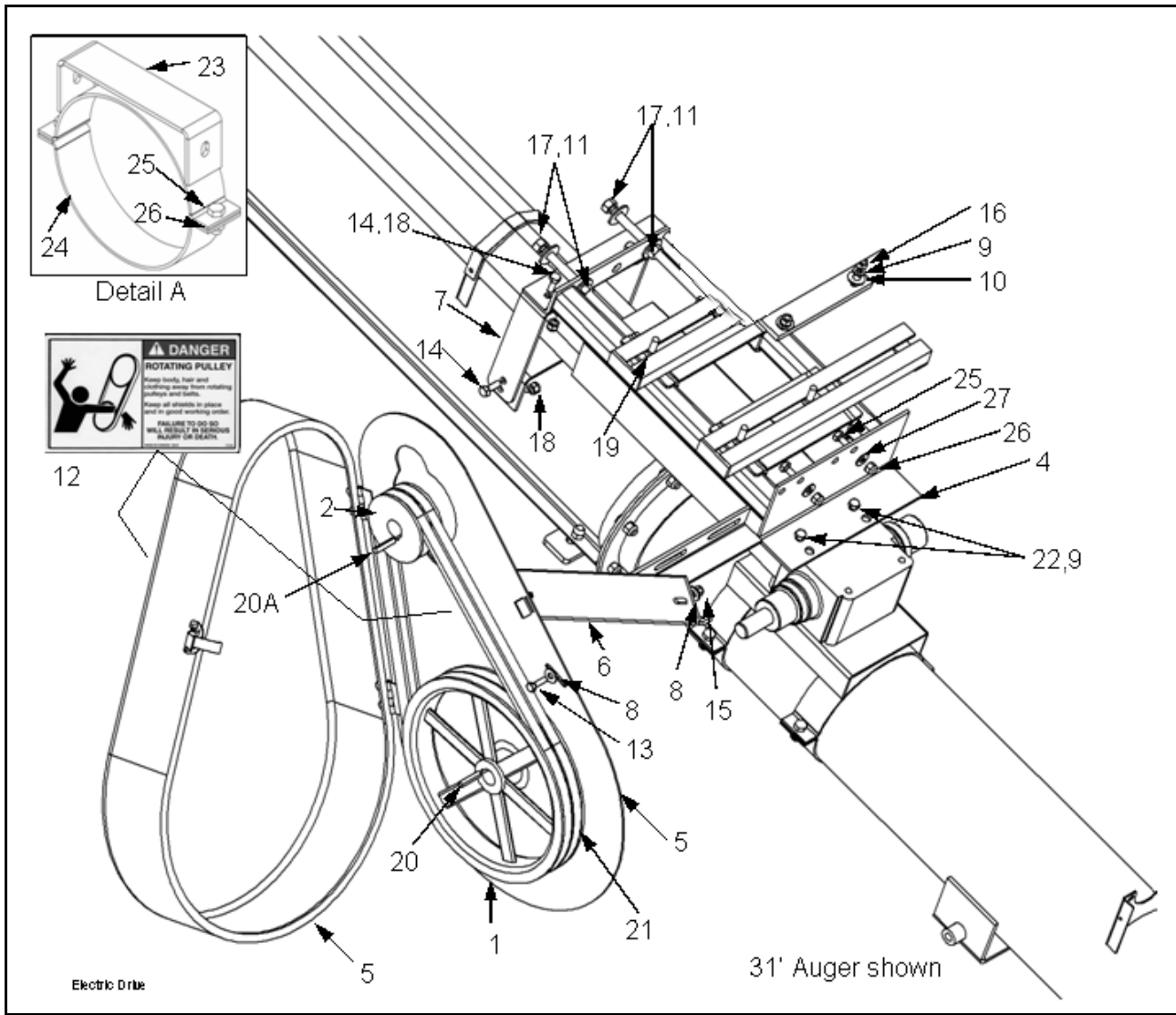


FRAME ASSEMBLY

ITEM	PART NO.	DESCRIPTION	8X31'	8X41'	8X51'	10X31'	CROSS REF.
1	4507070	LOWER ARM WELDMENT - GH 51'	-	-	2	-	
1	4507068	LOWER ARM WELDMENT - GH 41'	-	2	-	-	
1	4507066	LOWER ARM WELDMENT - GH 31'	2	-	-	2	
2	4507080	AXLE WELDMENT GH	1	1	1	1	
3	4503006	LIFT ARM, 51', 211-15/16"	-	-	2	-	
3	4503202	LIFT ARM, 41', 164-5/16"	-	2	-	-	
3	4507002	LIFT ARM, 31', 117-7/8"	2	-	-	2	
4	4503007	LIFT ARM X-SUPPORT	-	-	1	-	
5	19264	INNER SEAL SE11	2	2	2	2	4500059-5
6	19265	INNER BEARING LM67048	2	2	2	2	4500059-3
7	19266	INNER RACE LM67010	2	2	2	2	4500059-4
8	19267	HUB W/CUPS (INCL. 5, 7, 9)	2	2	2	2	4500059-8
9	19268	OUTER RACE LM11910	2	2	2	2	4500059-2
10	19269	OUTER BEARING LM1949	2	2	2	2	4500059-1
11	19270	NUT, CASTELLATED 3/4 UNF	2	2	2	2	4500059-10
12	17757	COTTER PIN 3/16 X 2	2	2	2	2	2300198
13	19272	DUST CAP DC12	2	2	2	2	4500059-6
14	4503236	TIRE 15"	2	2	2	2	
14A	19261	RIM AG 4 BOLT	2	2	2	2	4500059-11
15	19273	WHEEL BOLT WB10	8	8	8	8	4500059-7
16	28444	1/2" U-BOLT TO FIT 2 1/2" HSS	8	8	10	8	9900011
17	28446	BOLT, 3/4" X 2 1/2" GR5	2	2	2	2	9900535
18	19599	NUT NYLOCK 1/2"	16	16	20	16	9900538
19	19601	NUT NYLOCK 3/4"	2	2	2	2	9900695
20	19467	HUB 411 COMPLETE LESS NUT	2	2	2	2	4500059
21	19263	SPINDLE	2	2	2	2	4500010-4
22	4507079	LOWER ARM STABILIZER	1	1	1	1	

Π

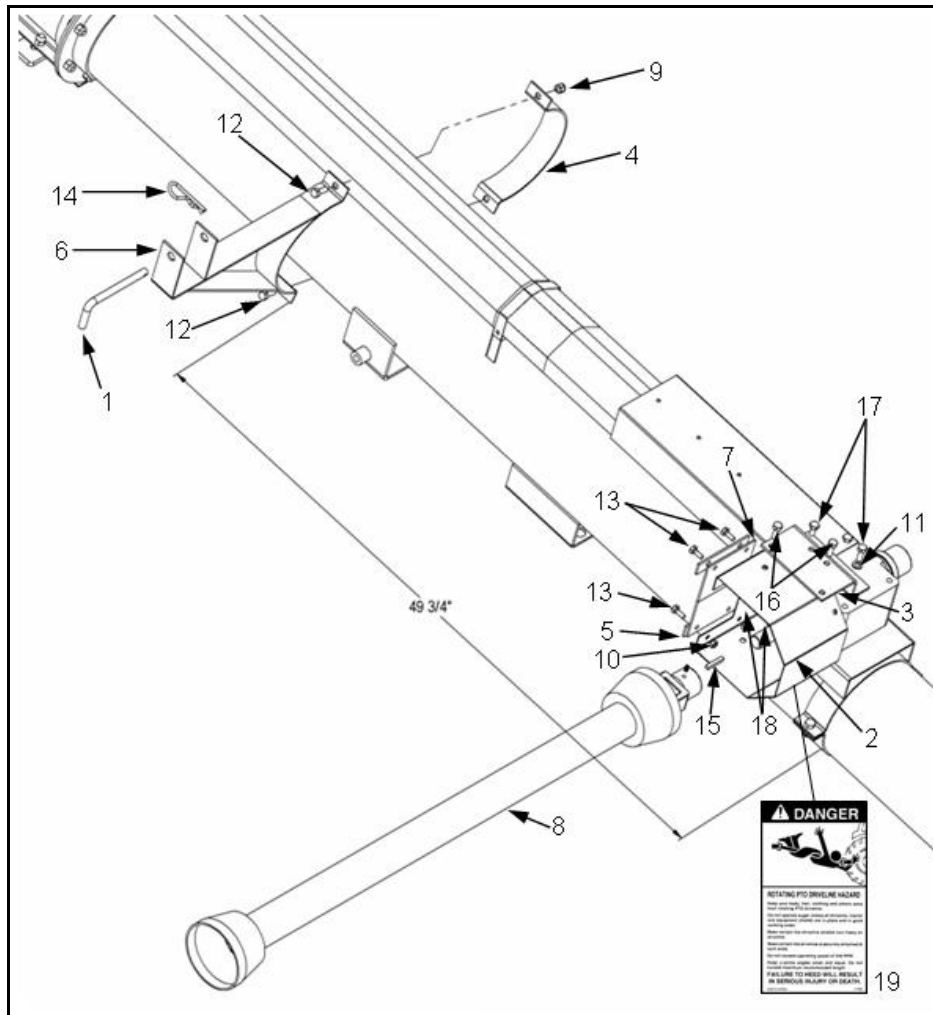
ELECTRIC MOTOR DRIVE



ITEM	PART NO.	DESCRIPTION	8"	10"	CROSS REF.
1	19613	12.75 X 1 DOUBLE GROOVE PULLEY	1	-	
1	28473	16.35 X 1 TRIPLE GROOVE PULLEY	-	1	1900018
2	A122	4.2 X 1-1/8 DOUBLE GROOVE PULLEY	1	-	1902216
2	1900019	4.15 X 1-3/8 TRIPLE GROOVE PULLEY	-	1	
4	19927	MOTOR MOUNT ASSEMBLY	1	1	4507008
5	28051	WR DOUBLE PULLEY GUARD	1	1	
6	19931	GUARD BRACKET FOR M.MOUNT	1	1	4507016
7	4507020	MOTOR MOUNT LEVELER	2	2	
8	27336	WASHER FLAT 5/16 PLT	6	6	9900529
9	19604	WASHER LOCK 3/8 PLT	4	4	9900528
10	17392	WASHER FLAT 3/8 PLT	4	4	0601008
11	17401	WASHER FLAT 1/2 PLD	4	4	9900565
12	17101	DECAL - ROTATING PULLEY	2	2	
13	18091	BOLT, 5/16 X 1 UNC GR5 PLD	2	2	9900839
14	18955	BOLT HEX 3/8X1 UNC GR5 PLT	4	4	9900699

ITEM	PART NO.	DESCRIPTION	8"	10"	CROSS REF.
15	19980	NUT NYLOCK 5/16 UNC GR5 PLT	2	2	9900520
16	17754	NUT HEX 3/8 UNC GR5 PLT	4	4	9900660
17	9900539	NUT HEX 1/2 UNC GR5 PLT	8	8	
18	17402	NUT NYLOCK 3/8 UNC GR5 PLT	4	4	0601007
19	9900980	CARRIAGE BOLT-FT 3/8X1-1/4	4	4	
20	19606	KEY, 1/4SQ X 1-1/2	1	1	700615
20A	19606	KEY, 1/4SQ X 1-1/2	1	-	700615
20A	67596	KEY, 5/16SQ X 1-1/4	-	1	
21	9900088	BELT B58	2	-	
21	19935	BELT B67	-	3	9900086
22	19540	BOLT HEX 3/8 X 3/4	2	2	9900530
23	4507024	STRAP ON MOTOR MT BKT 8"	1	-	
24	8": 19460 10":19801	HALF BAND, 8X2	1	-	
25	19542	BOLT, 7/16" - 14 X 1"	4	2	4500068
26	19598	LOCKNUT, 7/16" - 14	4	2	9900643
27	9900555	WASHER FLAT 7/16 PLT	2	2	

PTO ASSEMBLY



ITEM	PART NO.	DESCRIPTION	8"	10"	CROSS REF.
1	19648	HITCH PIN	1	1	
2	17231	PTO GUARD	1	1	
3	17248	SMALL PTO GUARD MOUNT	1	1	
4	19460	HALF BAND, 8 X 2	1	-	
4	19801	HALF BAND, 10 X 2.5	-	1	
5	17230	BELTING ATTACH STRAP (SHORT)	2	2	
6	19461	PTO SADDLE 8"	1	-	
6	19804	PTO SADDLE 10"	-	1	
7	17229	RUBBER GUARD	2	2	
8	19945	60" PTO - DRIVELINE	1	1	4503225
9	19598	NUT NYLOCK 7/16 UNC GR5 PLT	2	2	9900643
10	19595	NUT FLANGE 5/16 UNC GR5 PLT	4	4	9900129
11	19604	WASHER LOCK 3/8 PLD	2	2	9900528
12	19542	BOLT HEX 7/16X1 UNC GR5 PLT	2	2	4500068
13	19538	BOLT, 5/16 X 3/4 UNC GR5 PLD	4	4	9900797
14	19463	HAIRPIN 3/16 X 3 1/4	1	1	4500070
15	19606	KEY - 1/4 X 1-1/2	1	1	700615
16	19540	BOLT HEX 3/8X3/4 UNC GR5 PLT	2	2	9900530
17	18955	BOLT HEX 3/8X1 UNC GR5 PLT	2	2	9900699
18	17402	NUT NYLOCK 3/8	2	2	0601007
19	17103	DECAL - ROTATING PTO	1	1	

