



**WHEATHEART**

Utility Auger

# Parts List



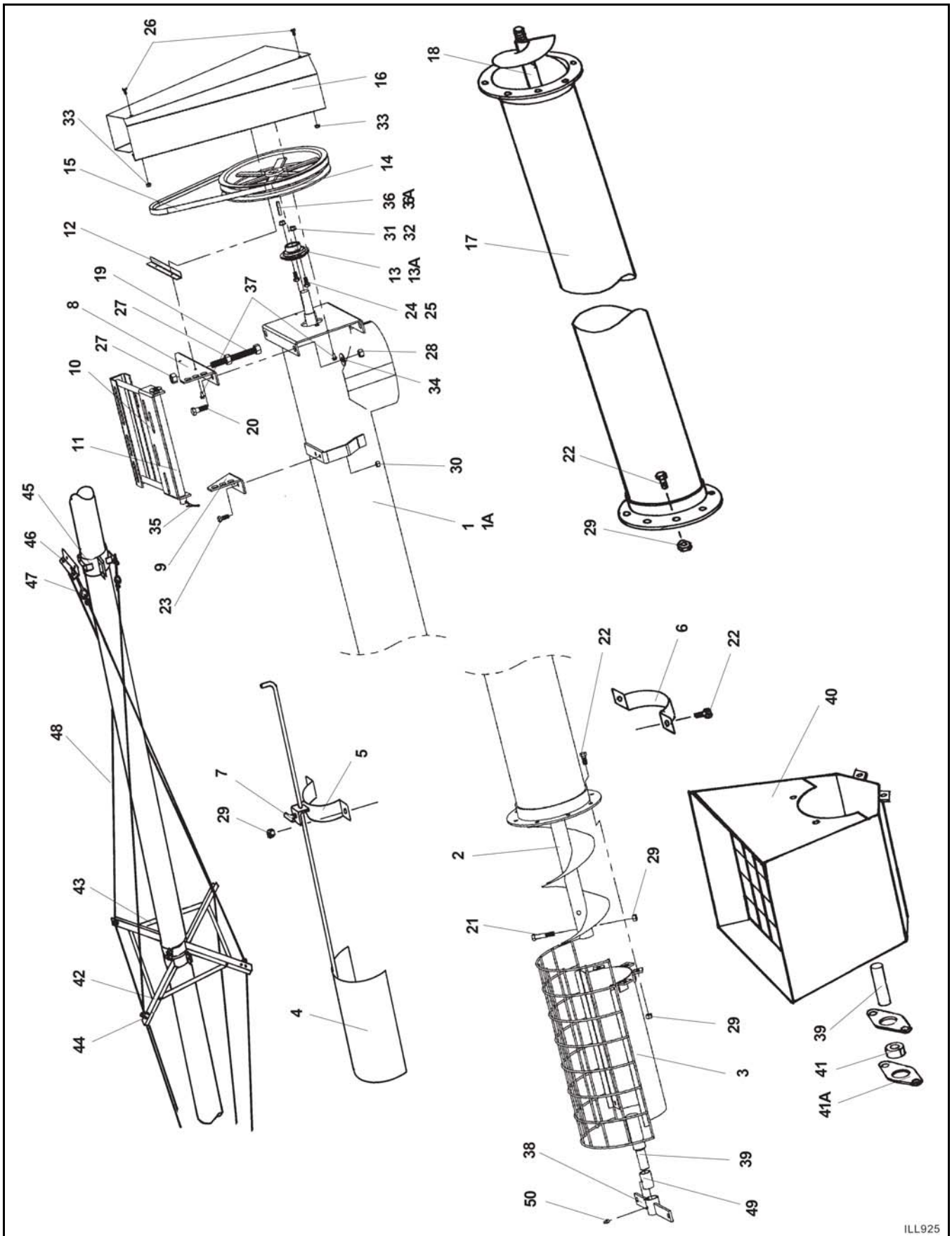
431 Gosport Street Moree  
Phone 02 67521511 Fax 02 67524685  
email - [andrew@grainland.com.au](mailto:andrew@grainland.com.au)  
[www.grainland.com.au](http://www.grainland.com.au)



## UTILITY AUGER

UT-6, UT-8 UTILITY AUGER .....	C2
UT-10 UTILITY AUGER .....	C4
UT-13 UTILITY AUGER .....	C6
UT-4 UTILITY AUGER .....	C8

# UT-6, UT-8 UTILITY AUGER



ILL925

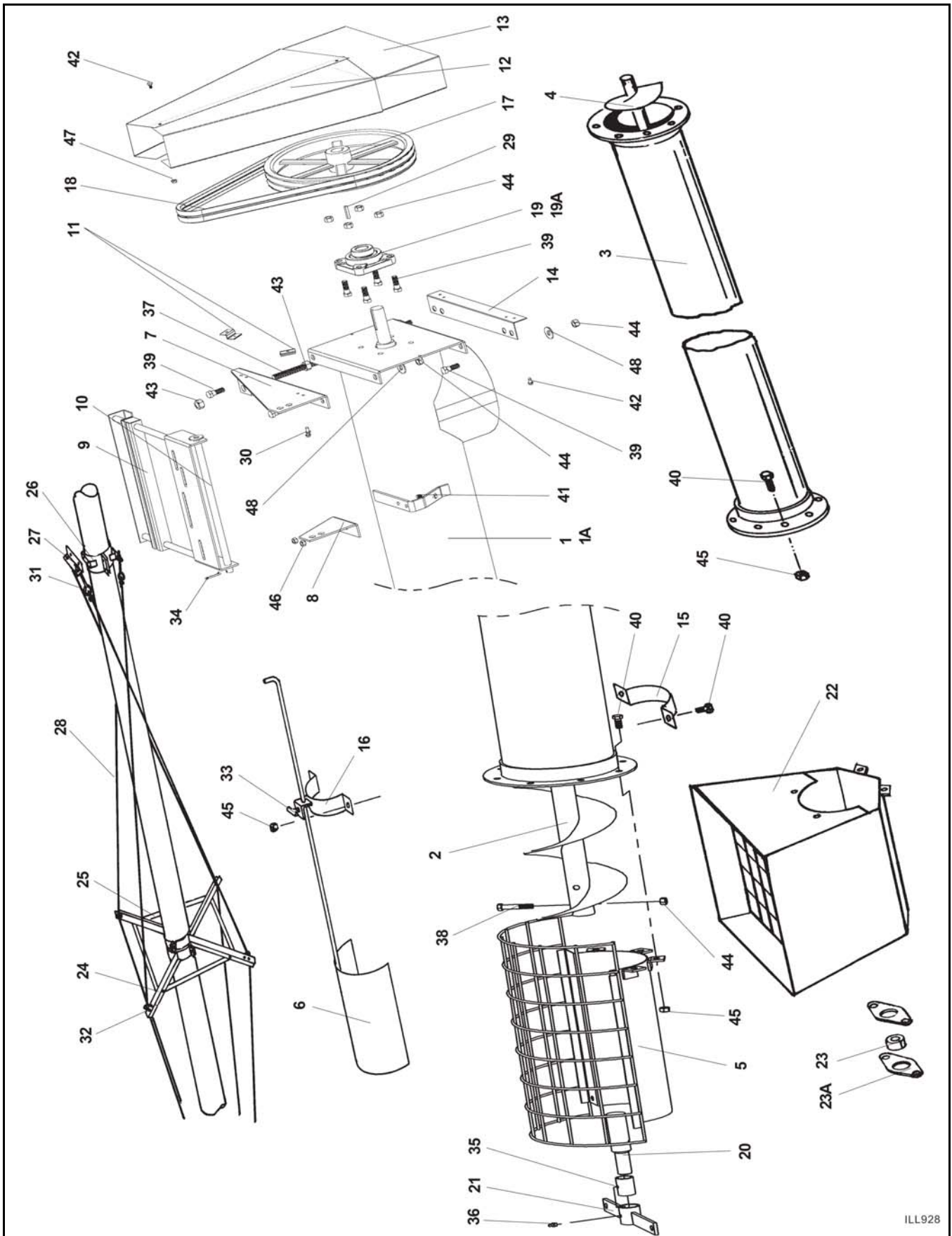
# UT-6, UT-8 UTILITY AUGER

ITEM	PART NO.		DESCRIPTION	QTY	CROSS REF.
	6"	8"			
28	19599	19599	LOCKNUT, 1/2" - 13		9900538
29	19598	19598	LOCKNUT, 7/16" - 14		9900643
30	17402	17402	LOCKNUT, 3/8" - 16		601007
31	—	19596	WASHER-LOCKNUT, 3/8" - 16		9900788
32	19595	—	WASHER-LOCKNUT, 5/16" - 18		9900129
33	19594	19594	WASHER-LOCKNUT, 1/4" - 20		9900130
34	17401	17401	FLAT WASHER, 1/2"		9900665
35	19271	19271	COTTER PIN, 1/8" X 1-1/2"		9900859
36	—	19606	SQ KEY, 1/4" X 1-1/2"		700615
36A	19224	—	WOODRUFF KEY, 1/4" X 1"		4503192
37	19274	19274	SELF-TAPPING SCREW, #14 X 5/8", W/ WASHERHEAD		9900132
38	19868	19870	FLIGHT SHAFT SUPPORT BUSHING	1	
39	19871	19872	STUB SHAFT	1	
40	19873	19875	INTAKE HOPPER	1	
41	18690	18690	HOPPER BEARING, HARDWOOD, LESS FLANGES	1	
41A	18694	18694	1" BEARING FLANGE, SINGLE, 2 BOLT	2	4503128
42	19876	19878	TRUSS STRUT W/HALF RING, SINGLE	4	
43	19879	19879	TRUSS BRACE, SINGLE	4	
44	19333	19333	5/16" CABLE DAMP	12	
45	19880	19882	TRUSS ANCHOR HALF RING	4	
46	19332	19332	TRUSS ATTACH ANGLE	4	
47	19331	19331	EYE BOLT, WITH NUT	8	4503071
48	19883	19883	5/16" TRUSS CABLE, 30' LONG, SINGLE	4	
48	19884	19884	5/16" TRUSS CABLE, 40' LONG, SINGLE	4	
49	19149	19149	BUSHING 1"	1	
50	19222	19222	GREASE FITTING	1	2300028
—	28729	28731	UTILITY AUGER CARTON, AS PACKED		

ITEM	PART NO.		DESCRIPTION	QTY	CROSS REF.
	6"	8"			
1	19820	19822	BASIC TUBE SECTION W/END PLATE	1	
1A	19823	19825	BASIC TUBE & FLIGHT BUNDLE, AS SHIPPED	1	
2	19826	19828	BASIC FLIGHT SECTION	1	
3	19829	19831	INTAKE SHIELD ASSEMBLY	1	
4	19832	19834	FEED CONTROL	1	
5	19835	19837	FEED CONTROL CLAMP	1	
6	19022	19460	TUBE HALFBAND	1	
7	19838	19838	T-BOLT	1	
8	27460	27460	FRONT MOUNT PLATE	1	
9	27461	27461	REAR MOUNT PLATE	1	
10	27462	27462	MOTOR MOUNT	1	
11	27463	27463	HINGE ROD	1	
12	27464	27464	SHIELD STRAP	1	
13	19321	—	1" FLANGETTE BEARING	1	300611
13	—	19322	1-1/4" FLANGETTE BEARING	1	
13A	18817	—	1" BEARING, LESS FLANGES	1	4503130
13A	—	18853	1-1/4" BEARING, LESS FLANGES	1	4503131
14	19613	19613	DOUBLE GROOVE 13" PULLEY	1	
15	19843	19844	BELT, B48 ON 6", B51 ON 7" & 8"	2	
16	19845	19845	PULLEY SHIELD	1	
17	19846	19848	5' EXTENSION TUBE SECTION	1	
17	19849	19851	10' EXTENSION TUBE SECTION	1	
17	19852	19854	15' EXTENSION TUBE SECTION	1	
18	19855	19857	5" EXTENSION FLIGHT SECTION	1	
18	19858	19860	10' EXTENSION FLIGHT SECTION	1	
18	19861	19863	15' EXTENSION FLIGHT SECTION	1	
19	27249	27249	ADJUST BOLT, 5/8" X 6"	1	
20	19589	19589	BOLT, 1/2" - 13 X 1-1/2", GRADE 5	1	
21	—	19545	BOLT, 7/16" - 14 X 2-1/4", GRADE 8	1	9900128
22	19542	19542	BOLT, 7/16" - 14 X 1", GRADE 5	1	4500668
23	18955	18955	BOLT, 3/8" - 16 X 1", GRADE 5	1	9900899
24	—	19540	BOLT, 3/8" - 16 X 3/4", GRADE 2	1	9900530
25	19538	—	BOLT, 5/16" - 18 X 3/4", GRADE 2	1	9900797
26	19537	19537	BOLT, 1/4" - 20 X 1/2", GRADE 5	1	9900170
27	19864	19864	HEXNUT, 5/8" - 11	1	



# UT-10 UTILITY AUGER



ILL928

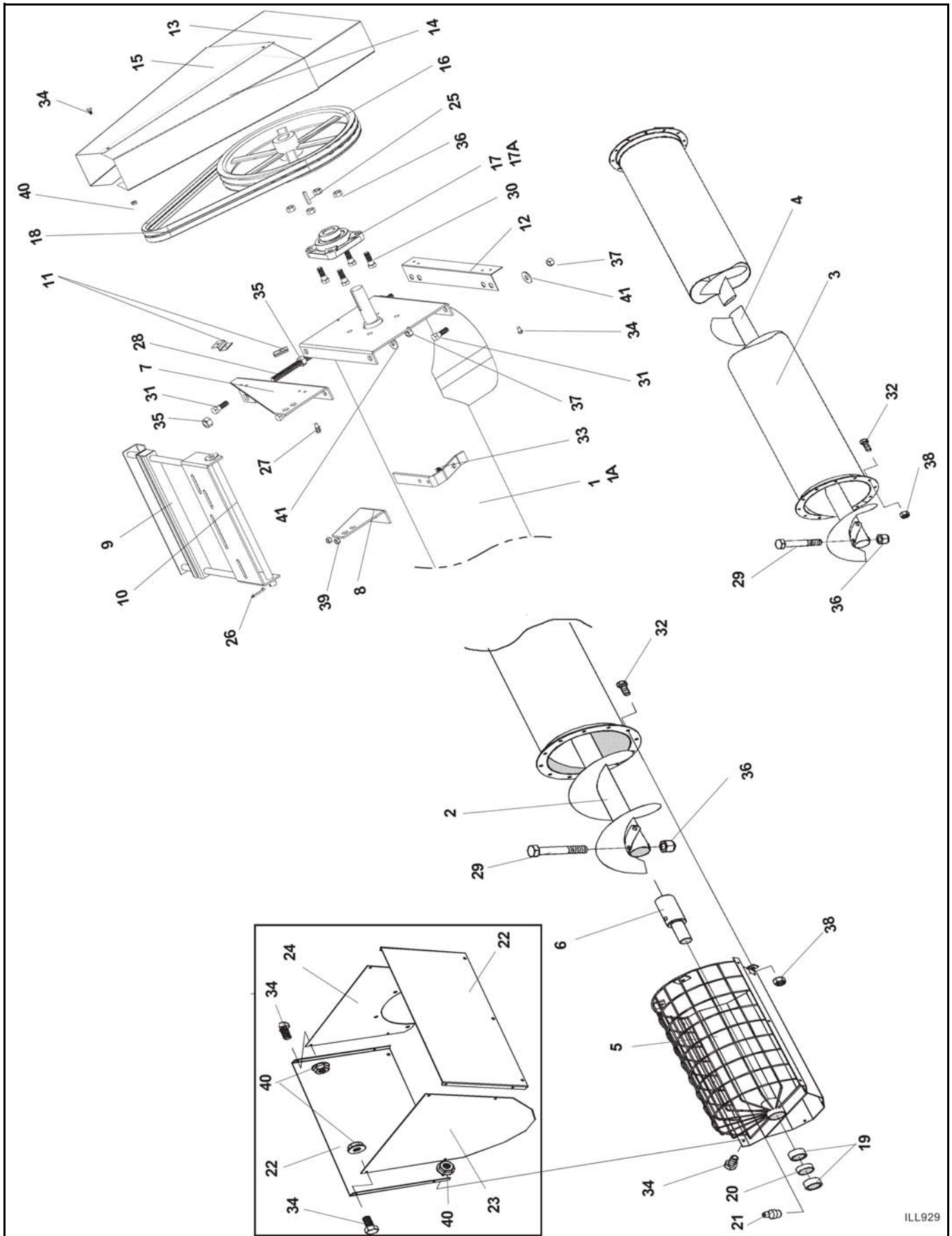
# UT-10 UTILITY AUGER

ITEM	PART NO.	DESCRIPTION	QTY	CROSS REF.
1	18235	BASIC TUBE SECTION	1	
1A	18355	BASIC TUBE & FLIGHT BUNDLE, AS SHIPPED		
2	18236	BASIC FLIGHT SECTION	1	
3	18254	5' EXTENSION TUBE		
3	18256	10' EXTENSION TUBE		
3	18258	15' EXTENSION TUBE		
4	18255	5' EXTENSION FLIGHT		
4	18257	10' EXTENSION FLIGHT		
4	18259	15' EXTENSION FLIGHT		
5	18237	INTAKE SHIELD ASSEMBLY	1	
6	18238	FEED CONTROL	1	
7	27465	FRONT MOUNT PLATE	1	
8	27466	REAR MOUNT PLATE	1	
9	27467	MOTOR MOUNT	1	
10	27468	HINGE ROD	1	
11	27469	SHIELD SPACER	2	
12	19845	PULLEY SHIELD	1	
13	19930	PULLEY SHIELD EXTENSION	1	
14	18245	SHIELD MOUNT, LOWER	1	
15	19801	TUBE HALF BAND	1	
16	18246	FEED CONTROL CLAMP	1	
17	19950	DOUBLE GROOVE 15" PULLEY 1-1/4" BORE	1	
18	19934	BELT, B-62	2	
19	19567	1-1/4" BEARING, 4 BOLT	1	4500067
19A	18852	1-1/4" BEARING LESS FLANGE		9900856
20	18247	STUB SHAFT	1	
21	18248	FLIGHT SUPPORT W/BUSHING, GREASE FITTING	1	
22	18249	HOPPER		
23	18691	HOPPER BEARING, HARDWOOD, LESS FLANGES		
23A	18695	1-1/4" BEARING FLANGE, SINGLE, 2 BOLT		4500062
24	18250	TRUSS STRUT WHALF RING, SINGLE	4	
25	18251	TRUSS BRACE, SINGLE	4	
26	18252	TRUSS ANCHOR HALF BAND	2	

ITEM	PART NO.	DESCRIPTION	QTY	CROSS REF.
27	19332	TRUSS ATTACH ANGLE	4	
28	19883	5/16" TRUSS CABLE, 30' LONG, SINGLE		
28	19884	5/16" TRUSS CABLE, 40' LONG, SINGLE		
29	17854	SQUARE KEY, 1/4" X 2-1/2"	1	
30	19274	SELF-TAPPING SCREW #14 X 5/8", WWASHER HEAD	4	9900132
31	19331	EYEBOLT & NUT	8	4503071
32	19333	5/16" CABLE CLAMP	12	
33	19838	T-BOLT	1	
34	19271	COTTER PIN, 1/8" X 1-1/2"	1	9900859
35	19776	BUSHING, 1-1/4"	1	
36	19222	PRESS IN GREASE FITTING	1	2300028
37	27249	ADJUST BOLT, 5/8" X 61	1	
38	19798	BOLT, 1/2" - 13 X 2-3/4", GRADE 8		9900169
39	19589	BOLT, 1/2" - 13 X 1-1/2", GRADE 5		
40	19542	BOLT, 7/16" - 14 X 1", GRADE 5		4500068
41	18955	BOLT, 3/8" - 16 X 1", GRADE 5		9900699
42	19537	BOLT, 1/4" - 20 X 1/2", GRADE 5		9900170
43	19864	HEXNUT, 5/8" - 11		
44	19599	LOCKNUT, 1/2" - 13		9900538
45	19598	LOCKNUT, 7/16" - 14		9900643
46		LOCKNUT, 3/8" - 16		601007
47	19594	WASHER-LOCKNUT, 1/4" - 20		9900130
48	17401	FLAT WASHER, 1/2"		9900565
---	28732	UT-10 UTILITY AUGER CARTON, AS PACKED		



# UT-13 UTILITY AUGER



ILL929

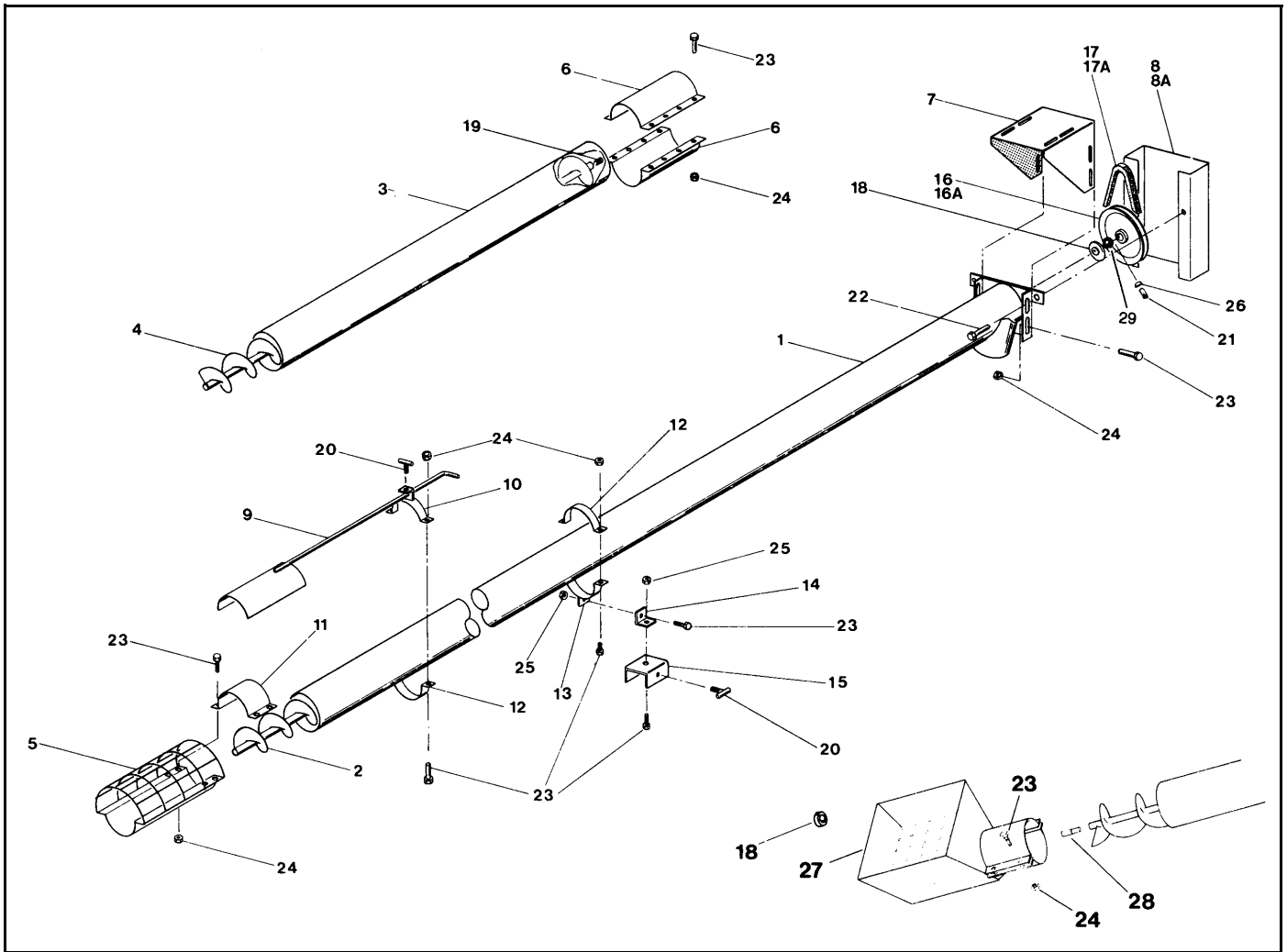
# UT-13 UTILITY AUGER

ITEM	PART NO.	DESCRIPTION	QTY	CROSS REF.
1	17493	BASIC TUBE SECTION	1	
1A	17395	BASIC TUBE & FLIGHT BDL, AS SHIPPED, INCL REF. 5 & 6		
2	17494	BASIC FLIGHT SECTION	1	
3	17499	5' EXTENSION TUBE		
3	17500	10' EXTENSION TUBE		
3	17501	20' EXTENSION TUBE		
4	17491	5' EXTENSION FLIGHT		
4	17492	10' EXTENSION FLIGHT		
4	18984	20' EXTENSION FLIGHT		
5	17495	INTAKE SHIELD WELDMENT	1	
6	17484	STUB SHAFT	1	
7	27465	FRONT MOUNT PLATE	1	
8	27466	REAR MOUNT PLATE	1	
9	27467	MOTOR MOUNT	1	
10	27468	HINGE ROD	1	
11	27469	SHIELD SPACER	2	
12	18245	SHIELD MOUNT ANGLE	1	
13	17487	PULLEY SHIELD EXTENSION	1	
14	17485	PULLEY SHIELD, RH	1	
15	17486	PULLEY SHIELD, LH	1	
16	17396	PULLEY, 16" TRIPLE GROOVE, 1-3/4" BORE	1	
17	18518	BEARING, C/W 4 BOLT FLANGE, 1-3/4"	1	
17A	17527	BEARING LESS FLANGE, 1-3/4"	1	
18	19935	BELT, B67	3	9900086
19	18944	BUSHING, 1-3/4"	2	
20	17502	BUSHING SPACER	1	
21	19222	PRESS IN GREASE FITTING	1	2300028
22	17488	SIDE PANEL	2	
23	17489	END PANEL, REAR	1	
24	17490	END PANEL, FRONT	1	
25	18541	SQUARE KEY, 3/8" X 3-1/2" LONG	1	
26	19271	COTTER PIN, 1/8" X 1-1/2"	1	9900959
27	19274	SELF-TAPPING SCREW, #14 X 5/8", W/WASHER HEAD		9900132
28	27249	ADJUST BOLT, 5/8" X 6"	1	
29	18545	BOLT, 5/8" - 11 X 4-1/2", GRADE 5		9900172
30	19977	BOLT, 5/8" - 11 X 1-3/4", GRADE 5		
31	19589	BOLT, 1/2" - 13 X 1-1/2", GRADE 5		
32	18698	BOLT, 7/16" - 14 X 1-1/4", GRADE 8		9900219
33	18955	BOLT, 3/8" - 16 X 1", GRADE 5		9900699
34	19537	BOLT, 1/4" - 20 X 1/2", GRADE 2		9900170
35	19864	HEXNUT, 5/8" - 11		
36	19600	LOCKNUT, 5/8" - 11		
37	19599	LOCKNUT, 1/2" - 13		9900538
38	19598	LOCKNUT, 7/16" - 14		9900643
39	17402	LOCKNUT, 3/8" - 16		601007
40	19594	WASHER-LOCKNUT, 1/4" - 20		9900130
41	17401	FLAT WASHER, 1/2"		9900565
---	28733	UT-1321 BASIC CARTON		





# UT-4 UTILITY AUGER



ITEM	PART NO.	DESCRIPTION	CROSS REF.
1	18213	BASIC TUBE SECTION	
	18353	BASIC TUBE & FLIGHT BUNDLE, AS SHIPPED	
2	18214	BASIC FLIGHT SECTION	
3	18215	5' EXTENSION TUBE	
3	18216	10' EXTENSION TUBE	
4	18217	5' EXTENSION FLIGHT	
4	18218	10' EXTENSION FLIGHT	
5	18219	INTAKE SHIELD ASSEMBLY	
6	18220	TUBE CONNECTOR BAND	
7	18221	MOTOR MOUNT	
8	18222	SHIELD FOR 6" PULLEY*	
8A	17073	SHIELD FOR 8" PULLEY*	
9	18223	FEED CONTROL	
10	18224	FEED CONTROL CLAMP	
11	18226	INTAKE CLAMP	
12	18225	TUBE HALF BAND	
13	18227	SWIVEL CLAMP	
14	18228	SWIVEL BRACKET	
15	18229	BOX CLAMP	
16	18230	SINGLE GROOVE 6" PULLEY *	

ITEM	PART NO.	DESCRIPTION	CROSS REF.
16A	17075	SINGLE GROOVE 8" PULLEY *	
17	18231	BELT, A29, USE WITH 6" PULLEY*	
17A	17074	BELT, A33, USE WITH 8" PULLEY*	
18	18232	7/8" BEARING, HARDWOOD	
19	18233	FLIGHT CONNECTOR	
20	19838	T-BOLT	
21	19225	SET SCREW, 3/8" - 16 X 3/8"	9900131
22	19274	SELF-TAPPING SCREW, #14 X 5/8"	9900132
23	19538	BOLT, 5/16" - 18 X 3/4", GRADE 2	9900797
24	19595	WASHER LOCKNUT, 5/16" - 18	9900129
25	19980	LOCKNUT, 5/16" - 18	9900520
26	19224	WOODRUFF KEY, 1/4" X 1"	4503192
—	28728	UTILITY AUGER CARTON, AS PACKED	
27	17121	HOPPER WITH BEARING & STUB SHAFT	
28	17122	STUB	
	17314	RIM WASHER, 7/8"	

\*When ordering belts, shields, and pulleys, check for correct size.